

GURUTZPE
ETXETAR group

GURUTZPE Solutions for Railway Axle and Wheelset machining

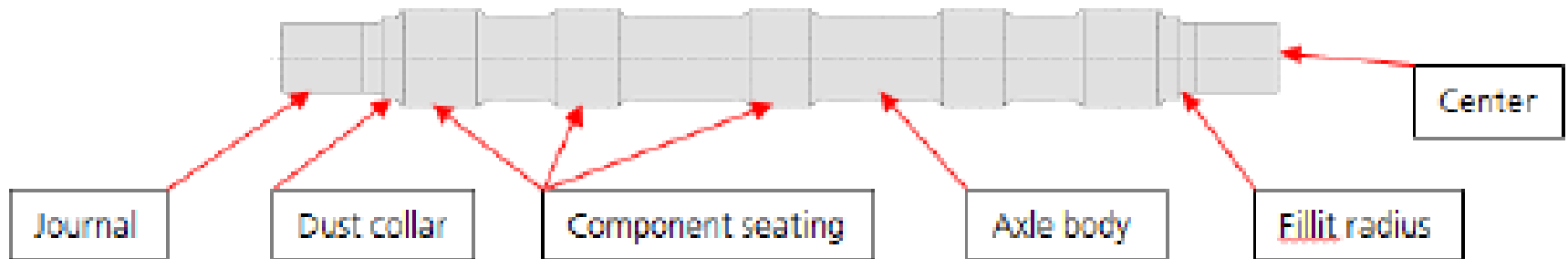
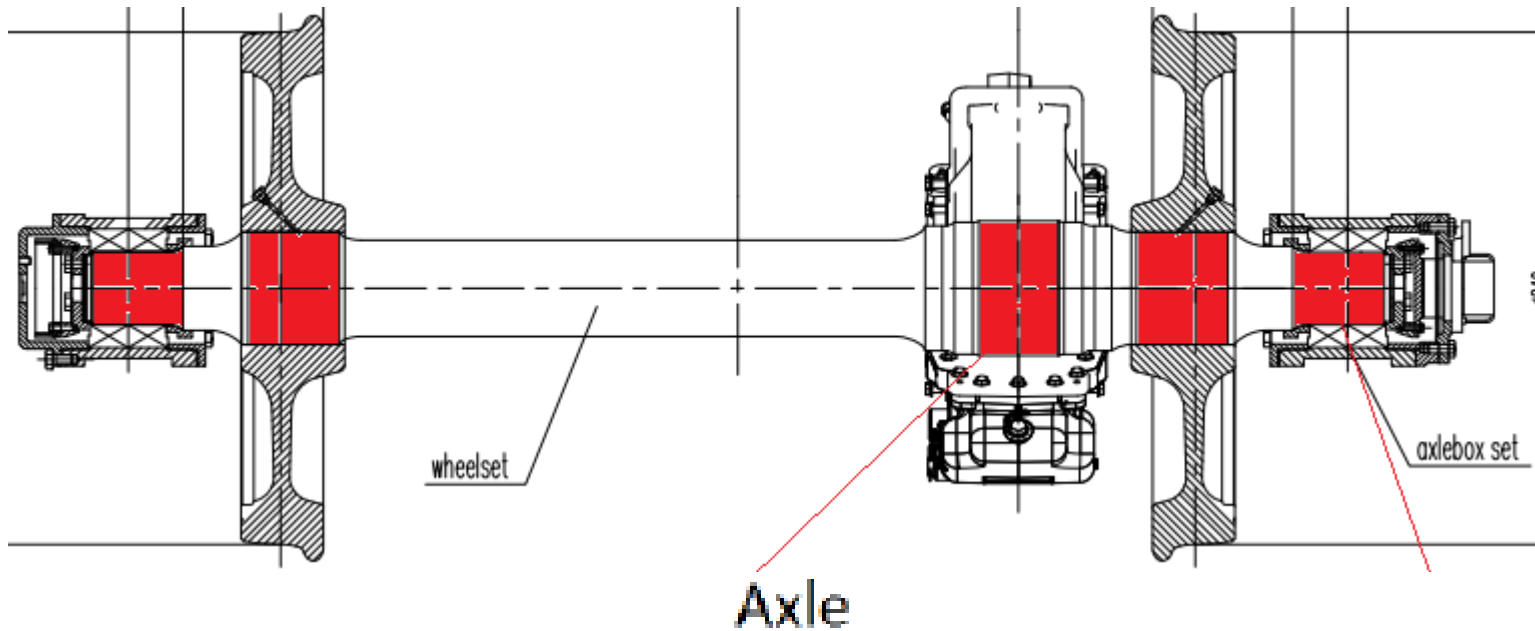


AXLE MACHINING



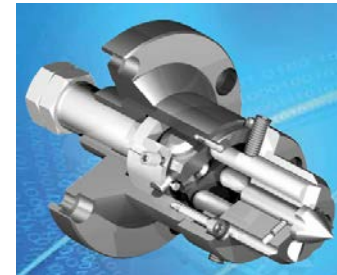
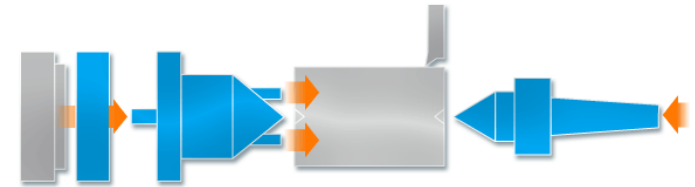
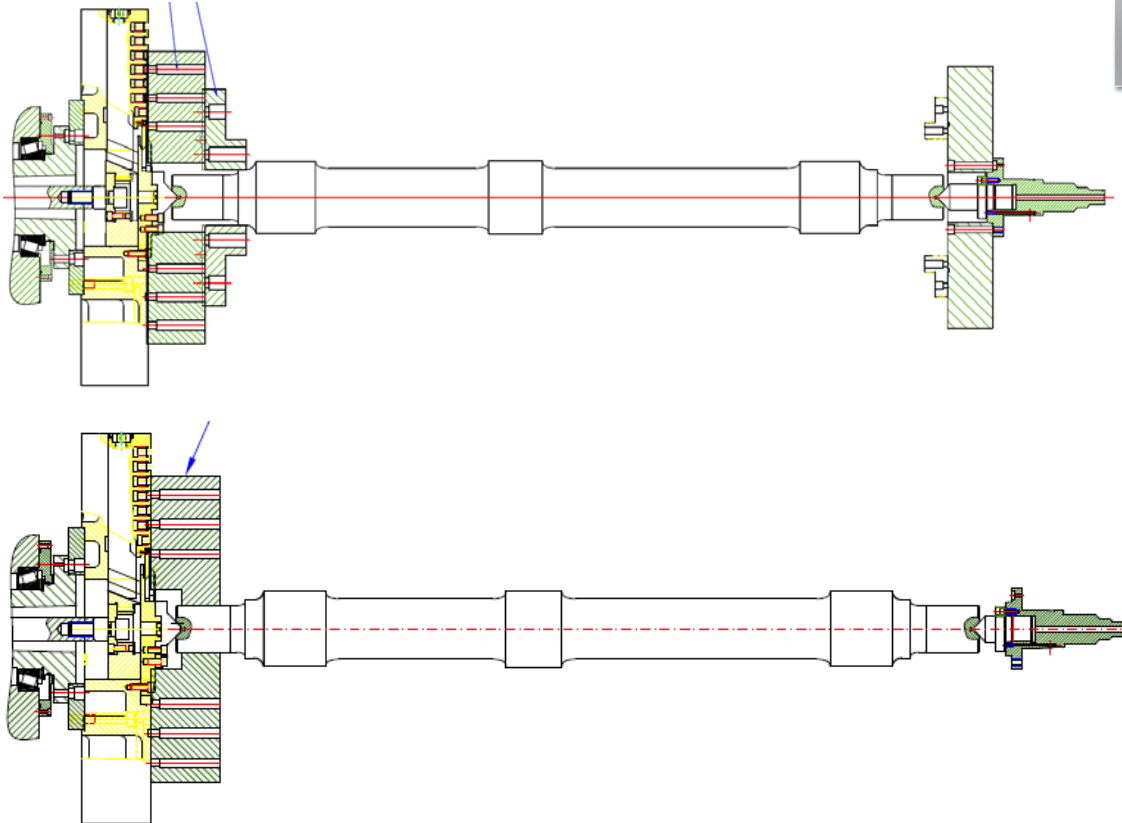
AXLE MACHINING

For axle machining, either with gear box and brake disk or without them, Gurutzpe offers the most suitable and versatile machine:



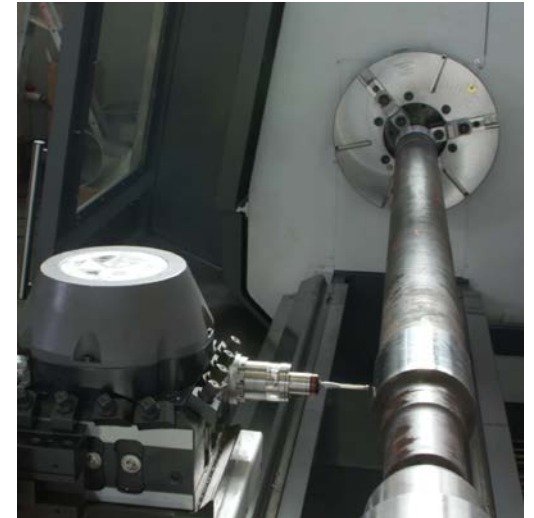
AXLE MACHINING

1. Holding the axle between centers either with one or with two chucks, with soft and hard jaws, or face drivers



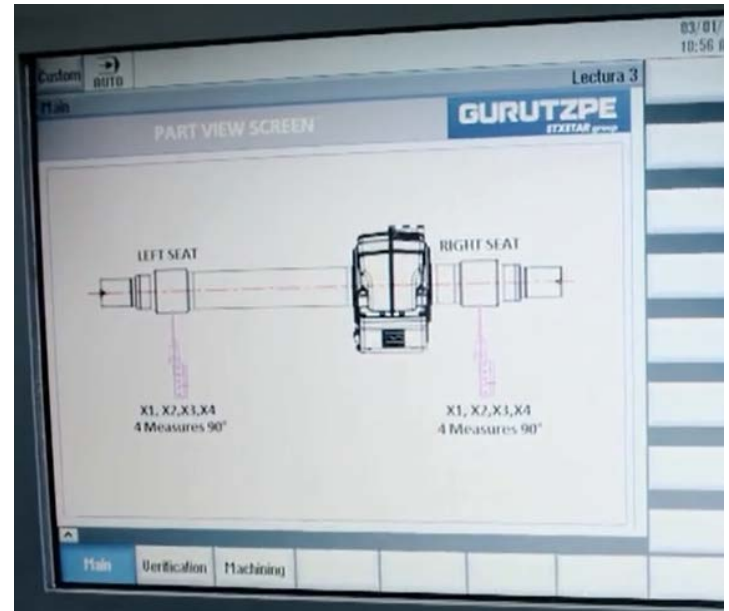
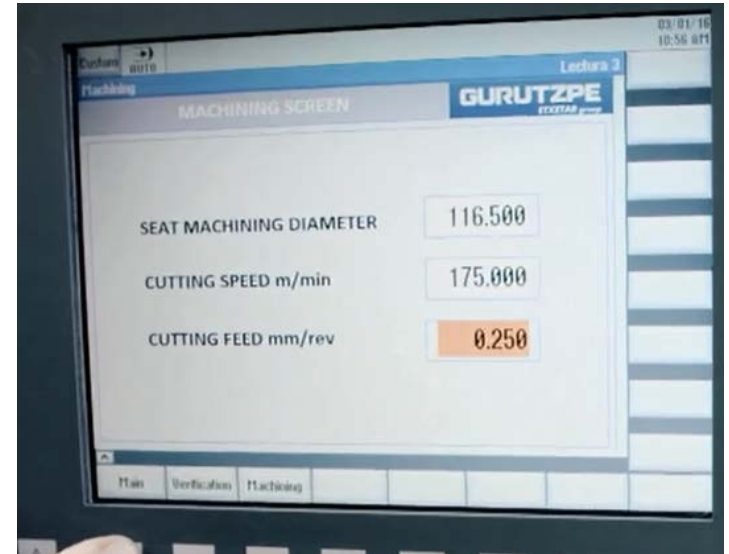
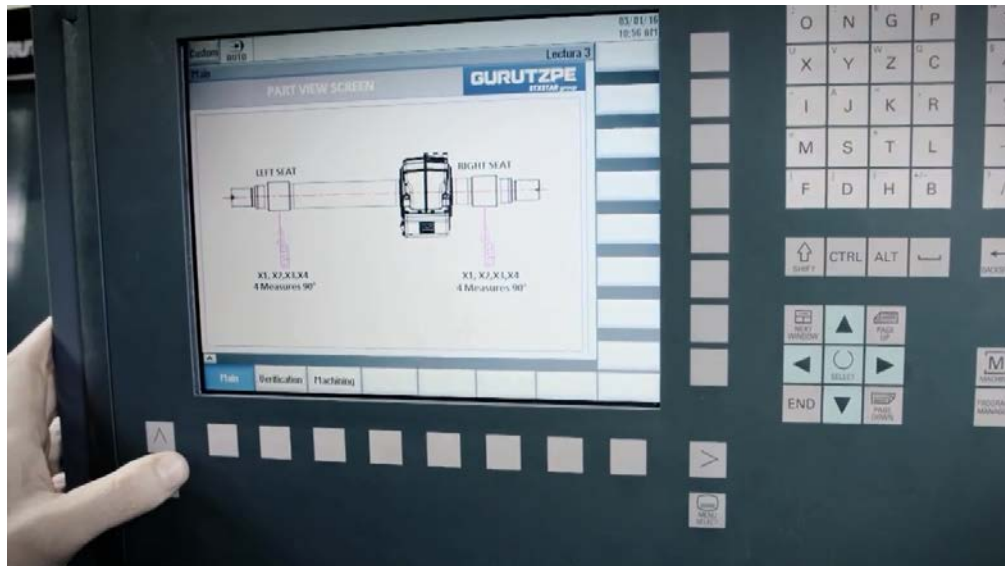
AXLE MACHINING

2. Probing (before machining the seats and after)



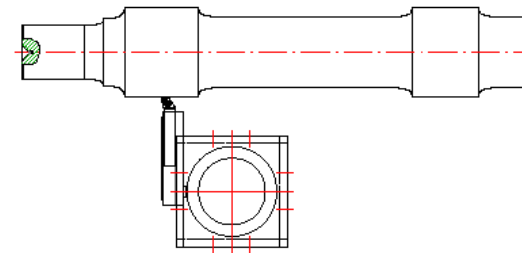
AXLE MACHINING

3. Selection of the program



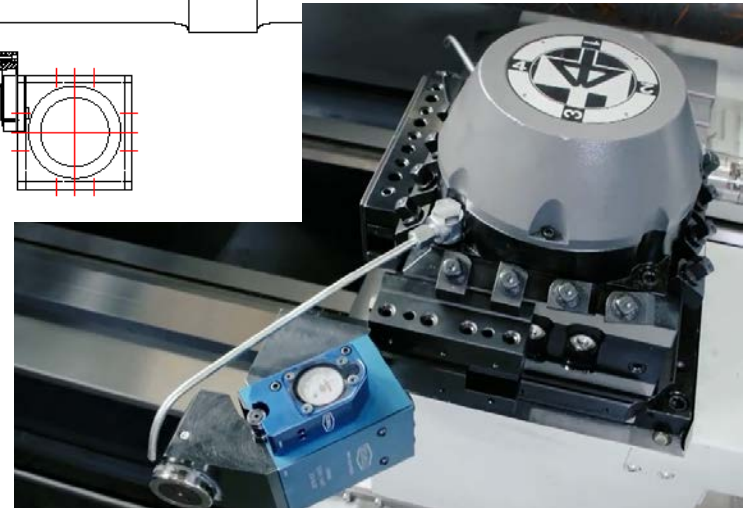
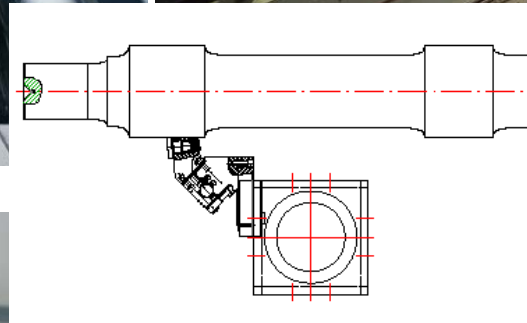
AXLE MACHINING

4. Machining the seats (wheel seats, brake disk seat, gear box seat, etc..)



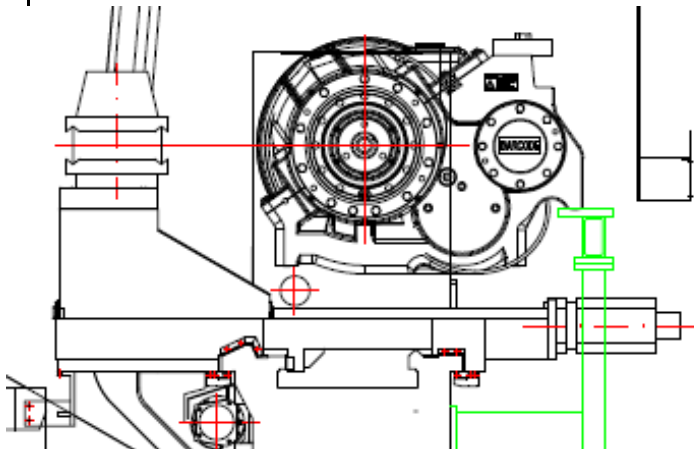
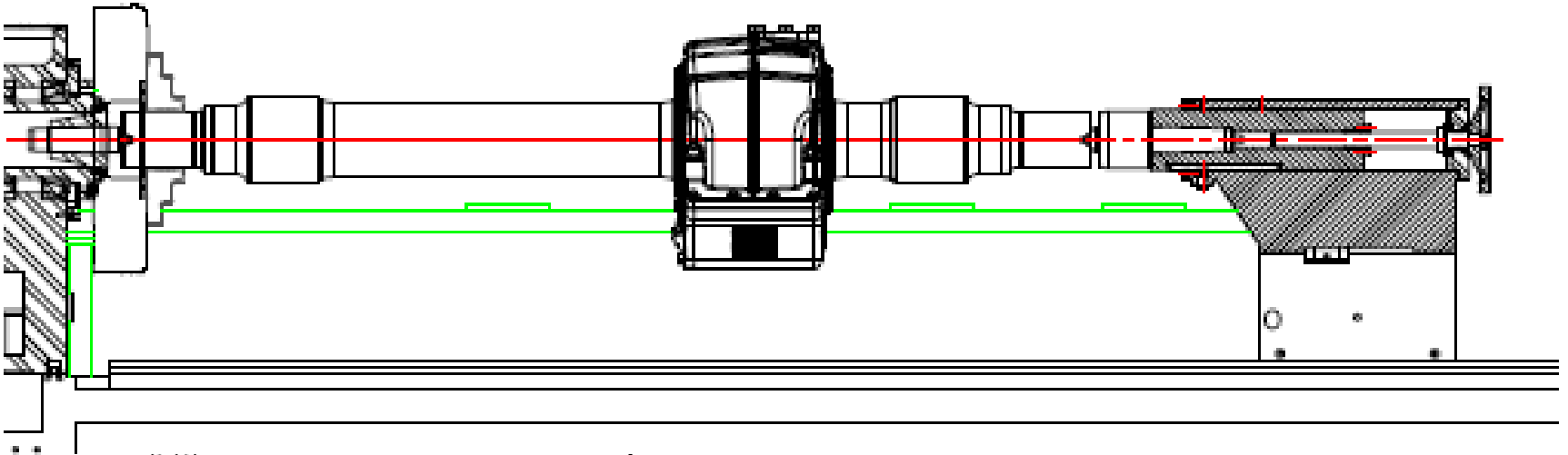
AXLE MACHINING

5. Burnishing the seats

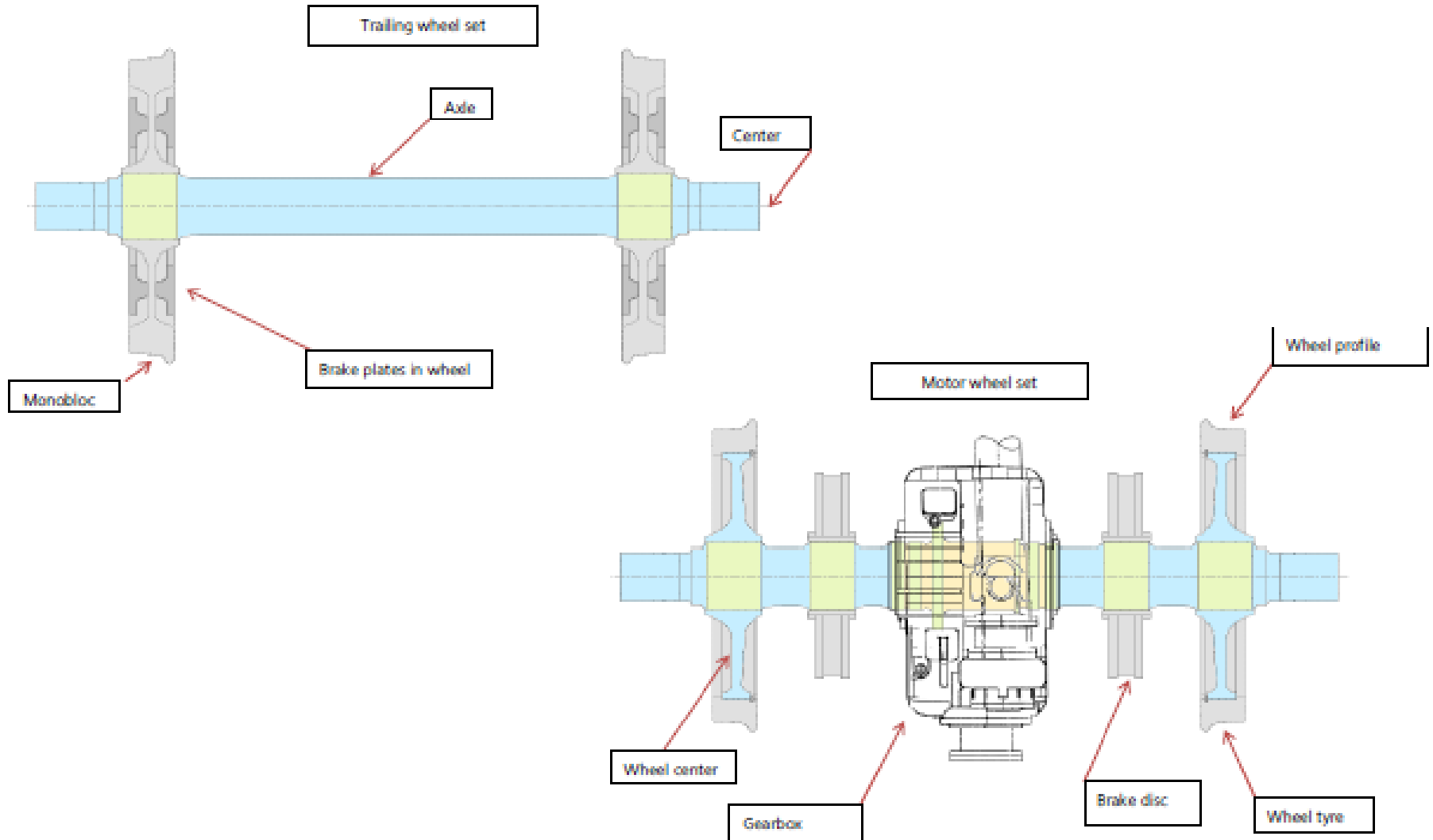


AXLE MACHINING

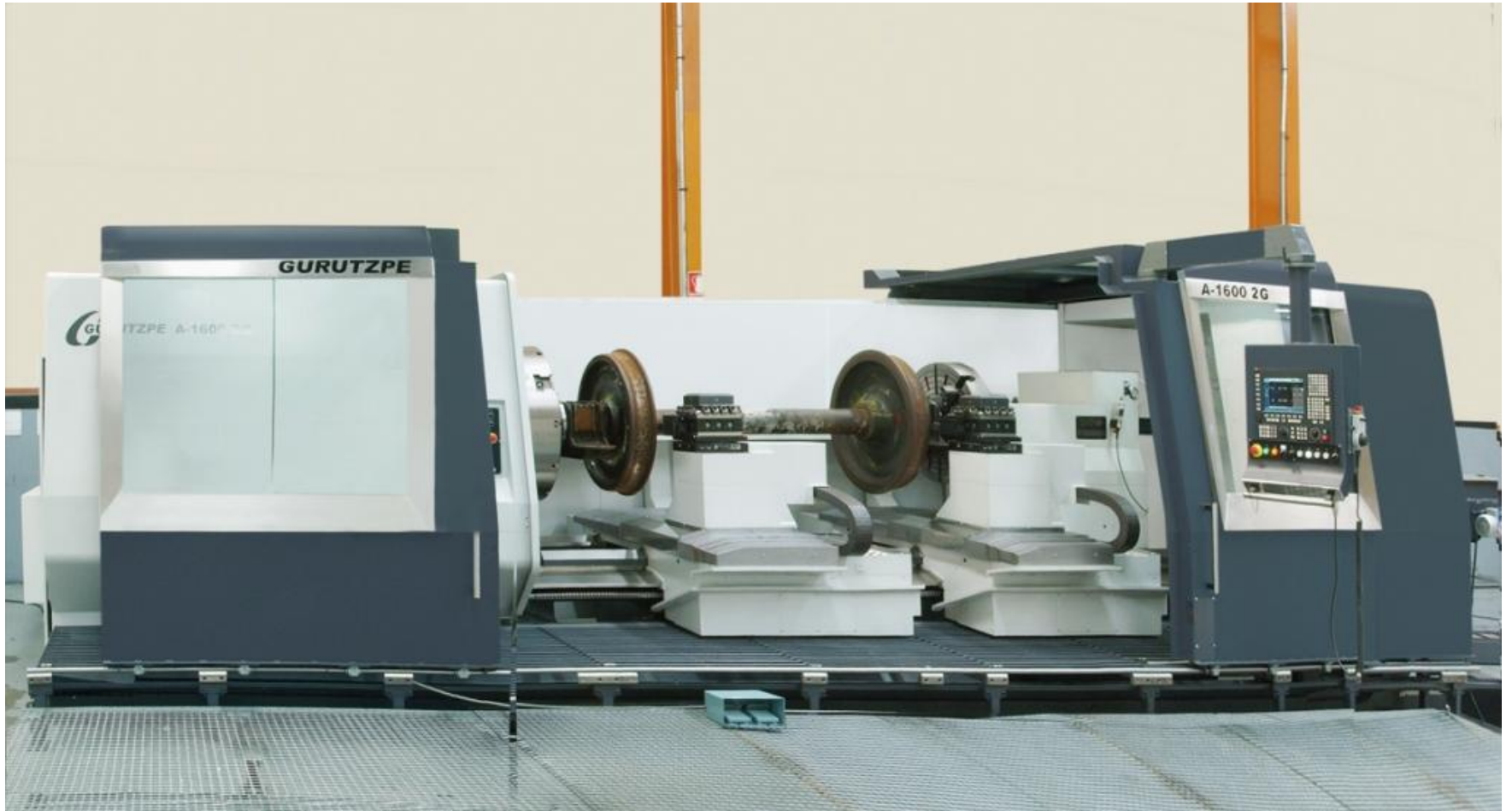
5. Clean axle or axle with gear box and/or brake disk



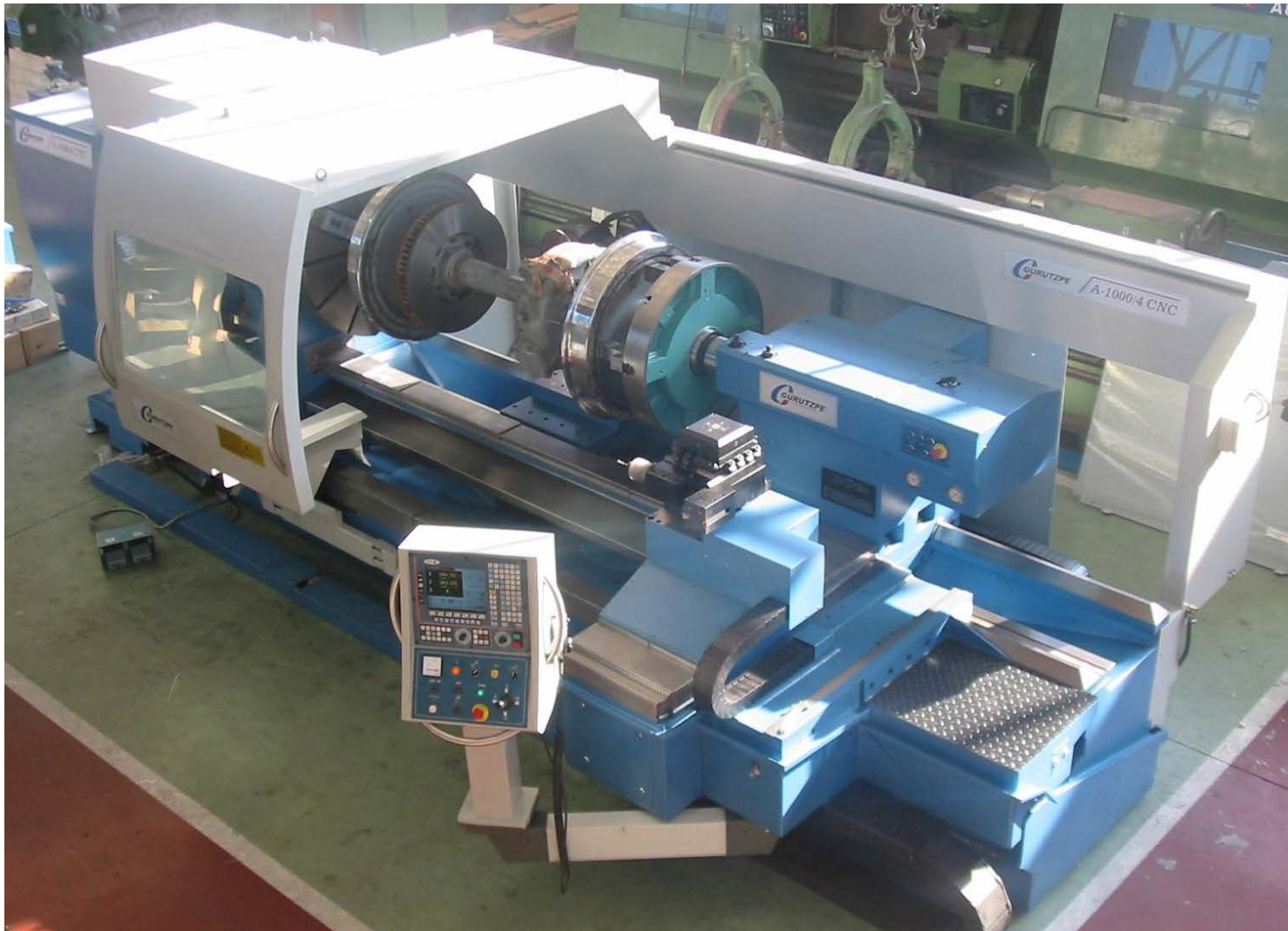
WHEELSET MACHINING



WHEELSET MACHINING



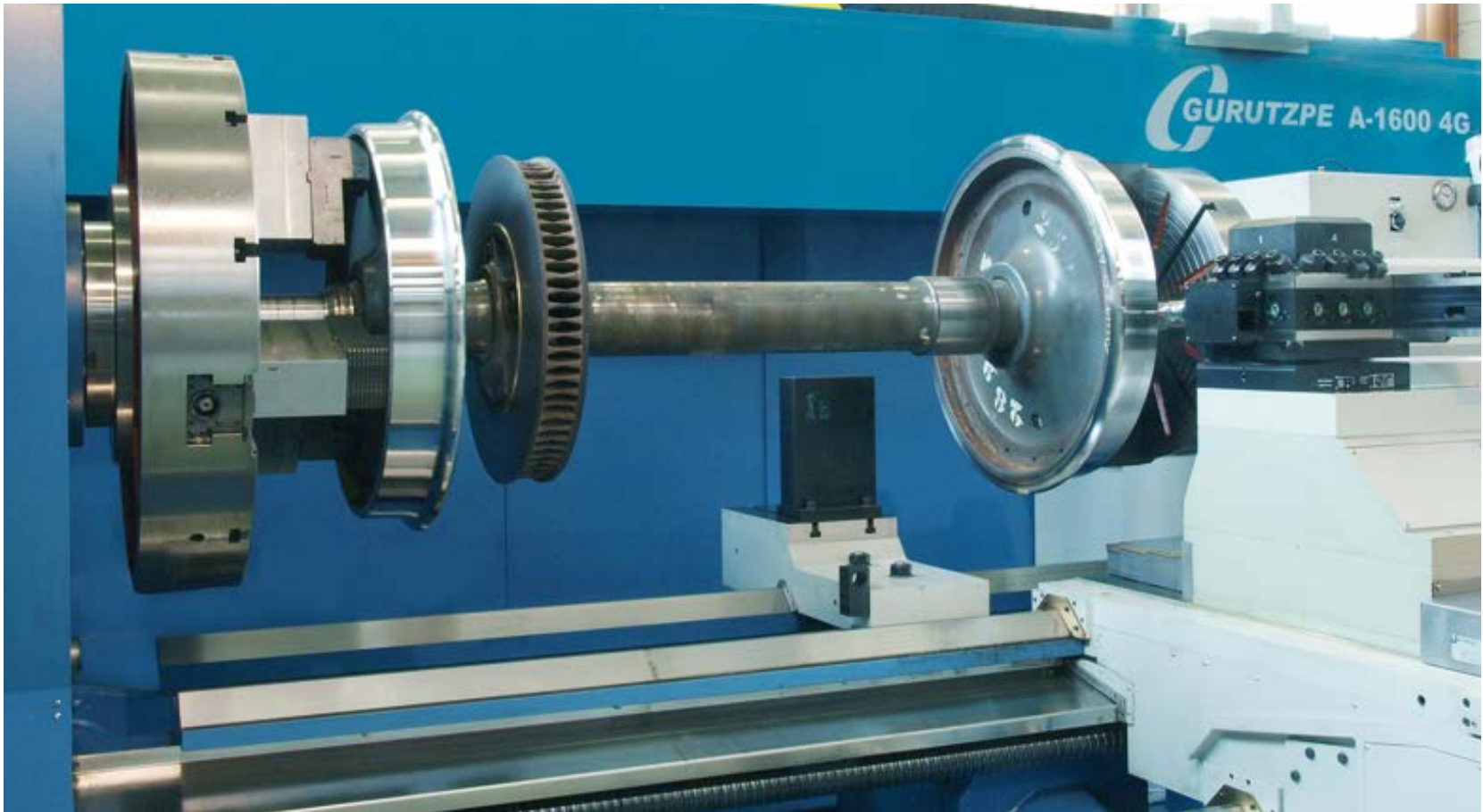
WHEELSET MACHINING



WHEELSET MACHINING



WHEELSET MACHINING



WHEELSET MACHINING

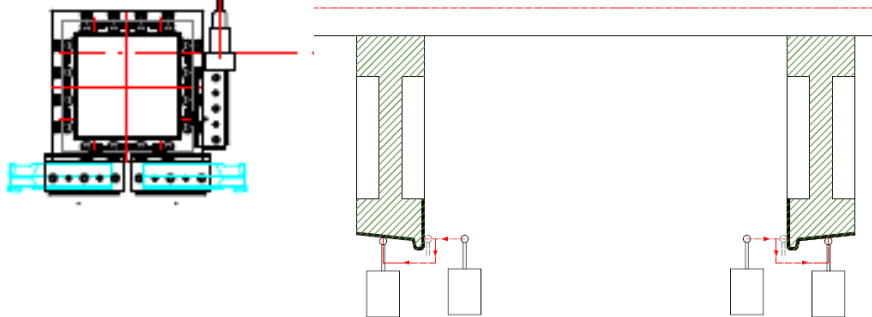
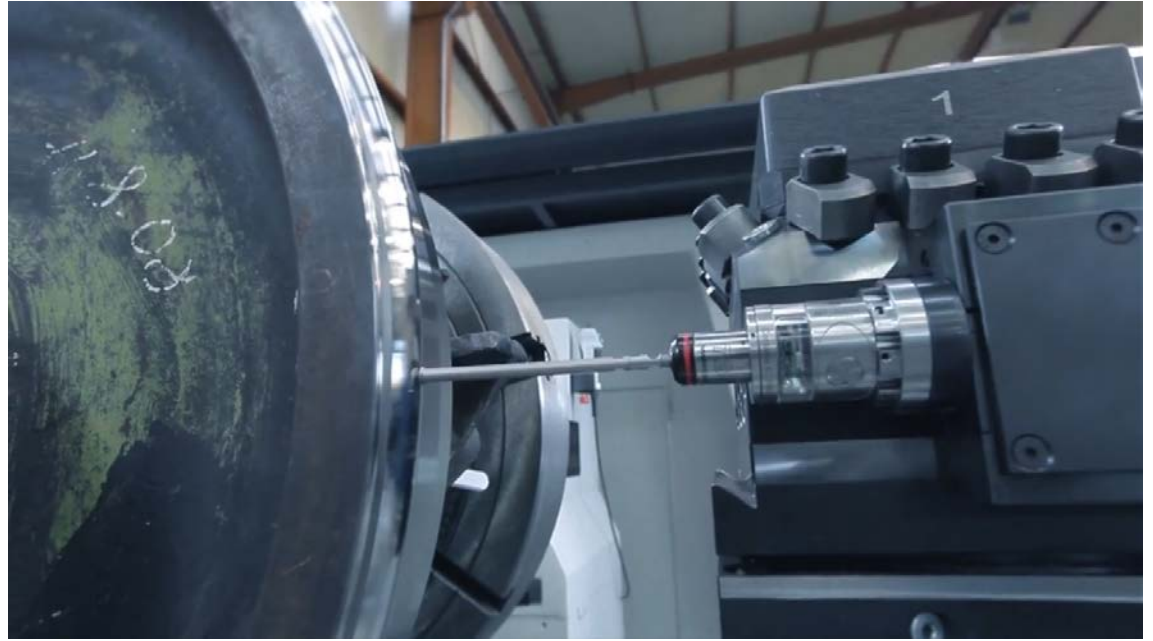
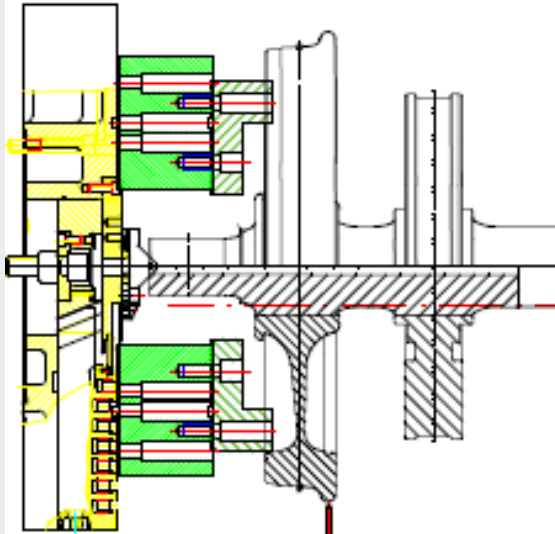
Versatility and modularity

GURUTZPE wheelset railway solutions are able to perform:

- axle
- wheels
- wheelset, either clean or with gear box, brake disk and/or grease box

WHEELSET MACHINING

- Probing



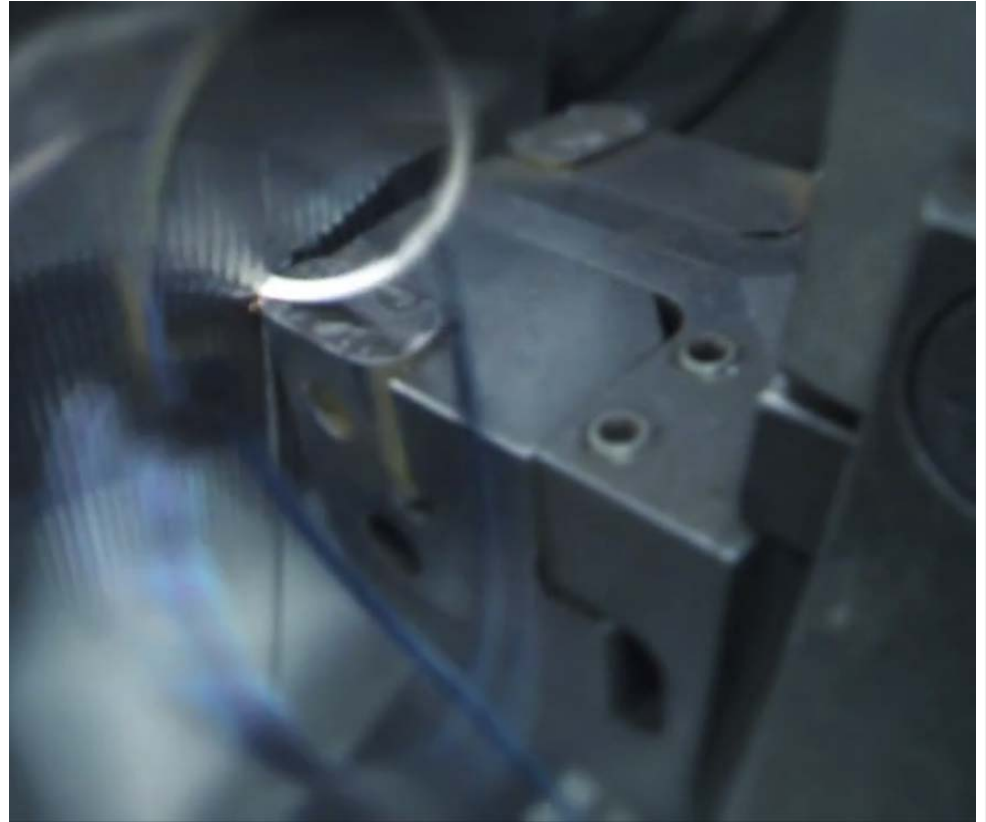
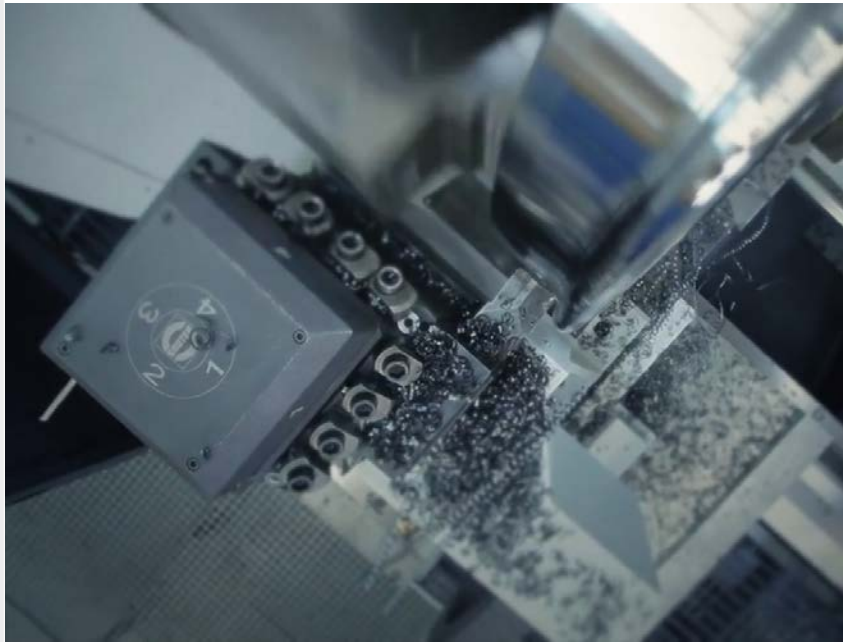
WHEELSET MACHINING

- Program selection



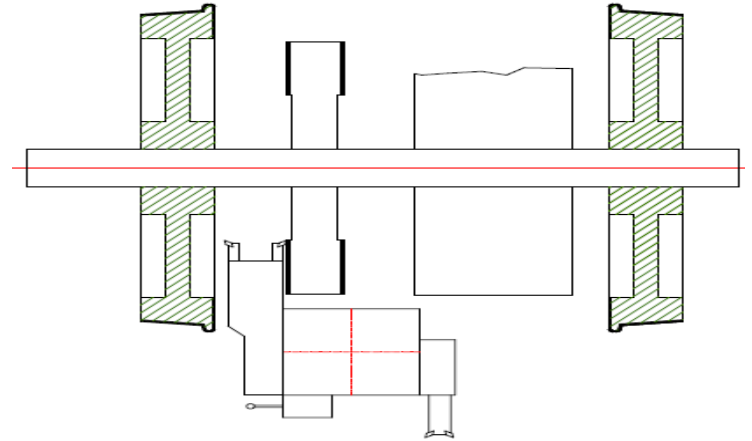
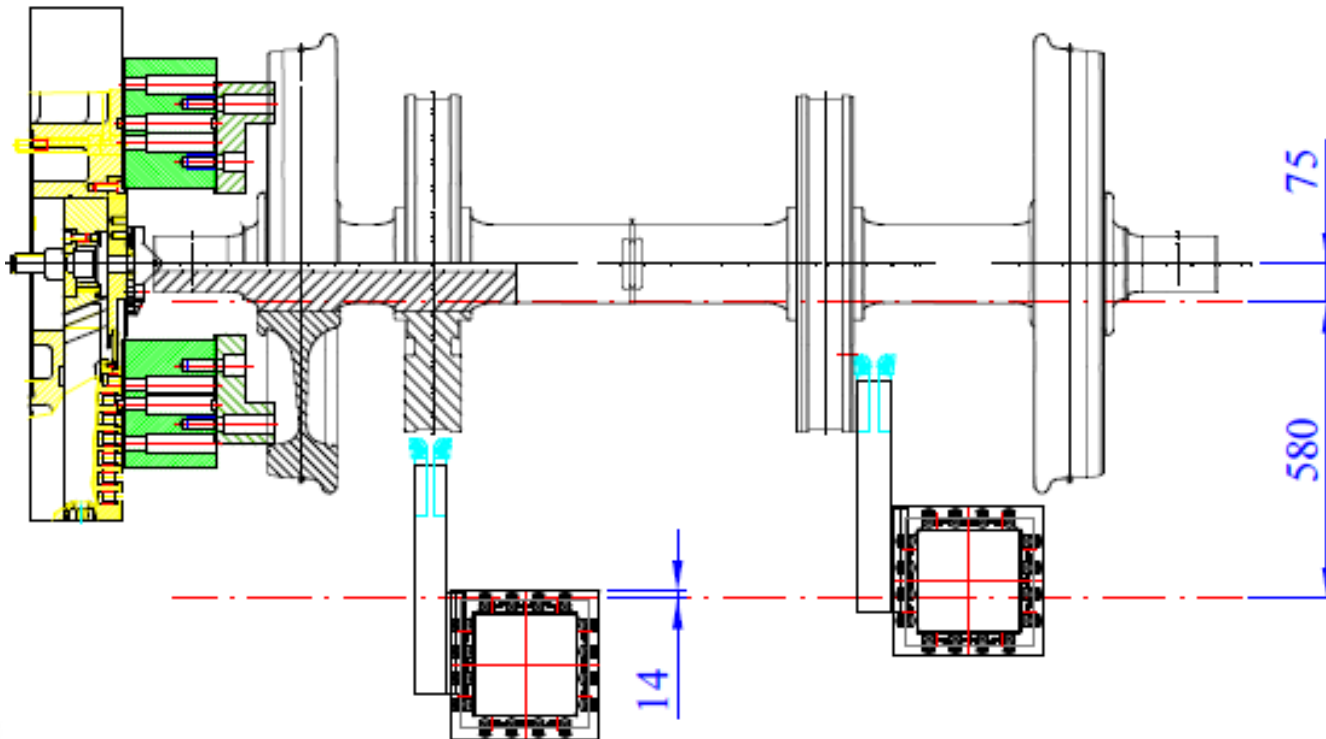
WHEELSET MACHINING

- Both wheels profiling with two inserts tool



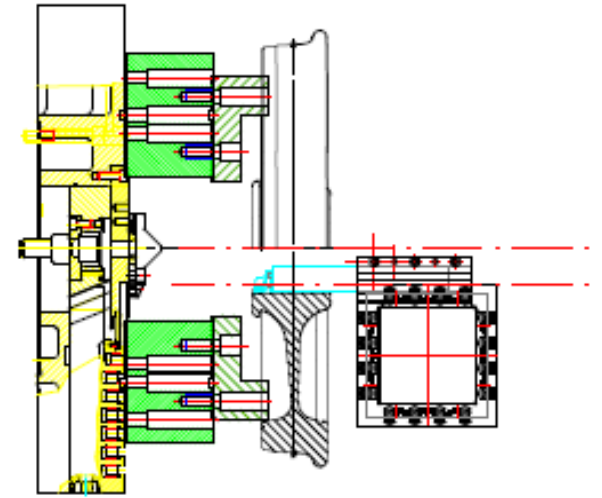
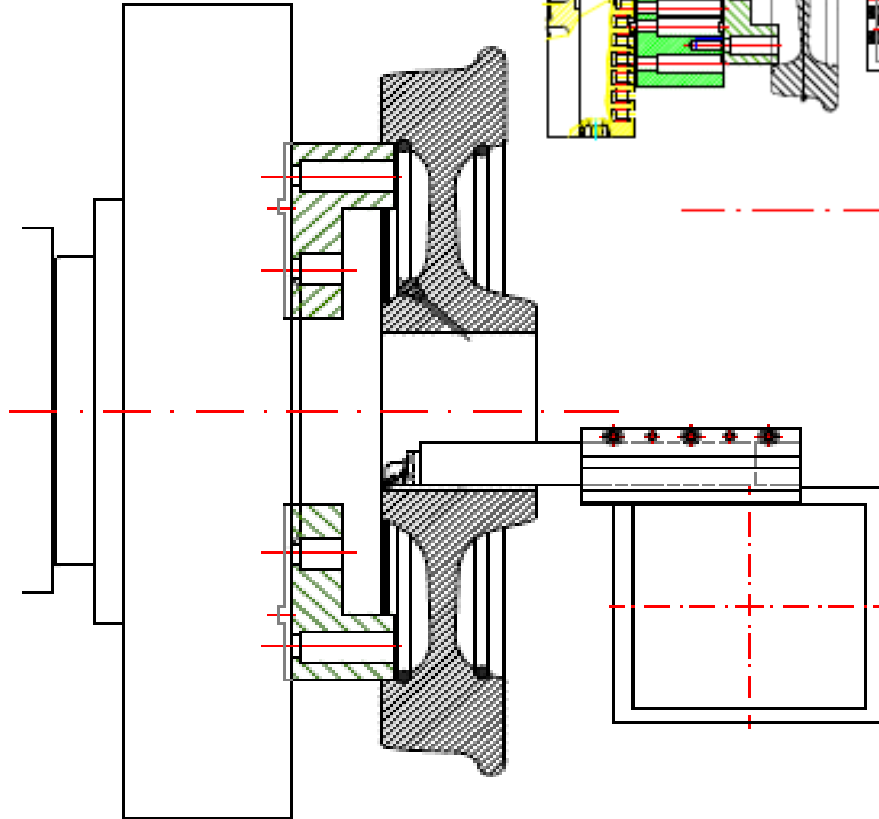
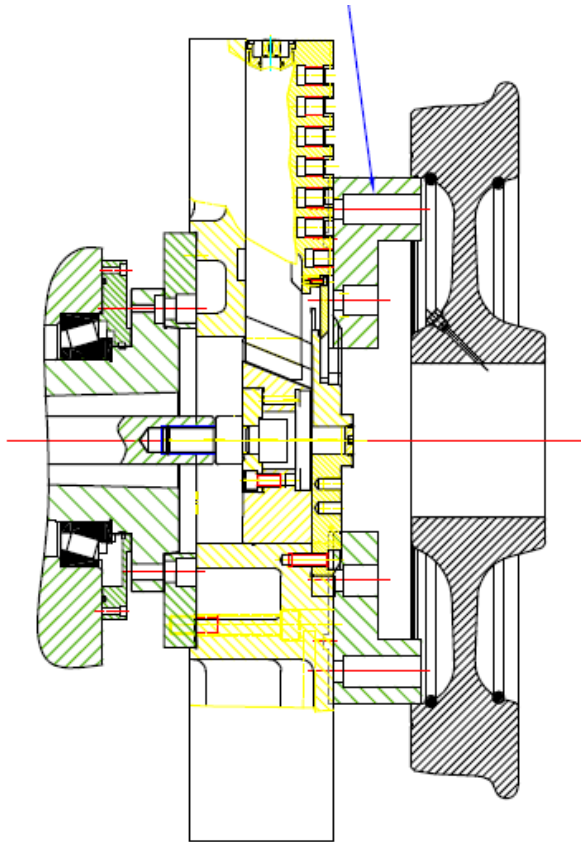
WHEELSET MACHINING

- Brake disk facing with one single tool with double insert



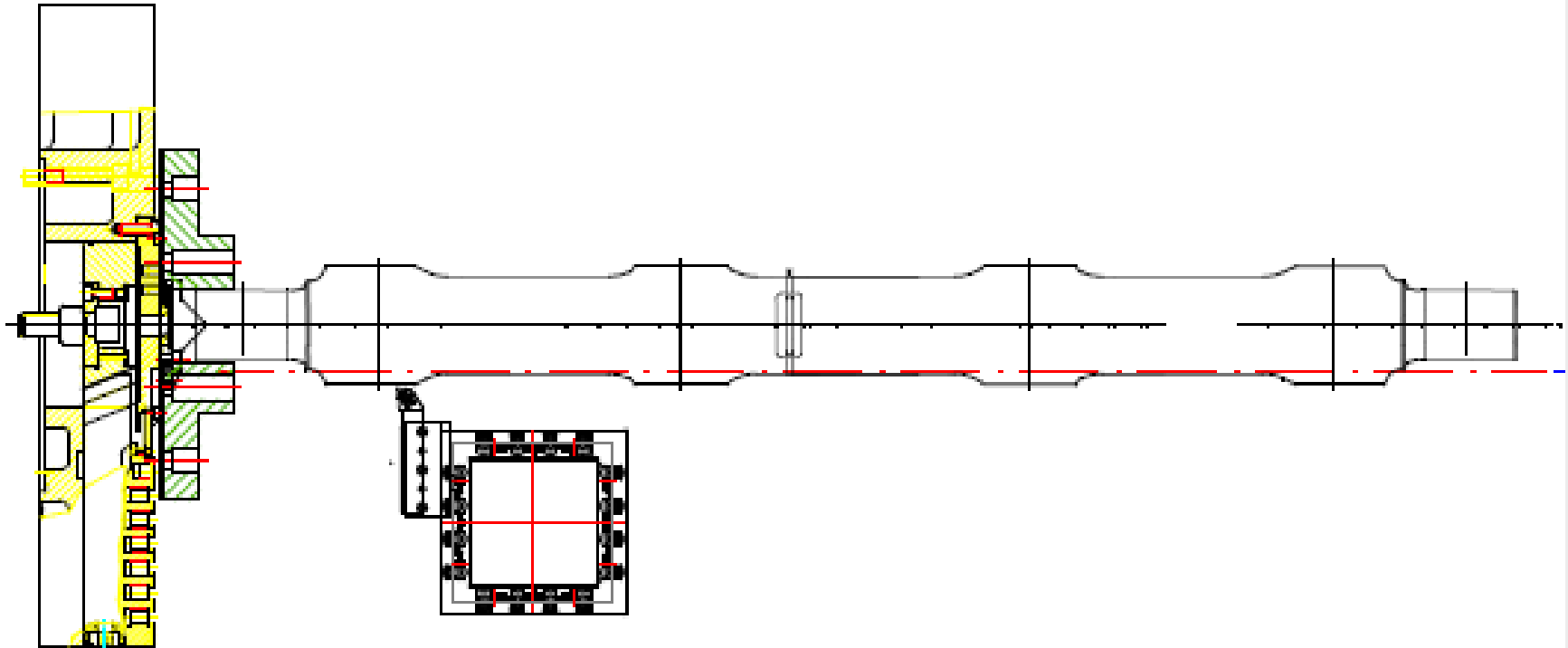
WHEELSET MACHINING

- Independent wheel clamping
- ID boring of the wheel axle seat



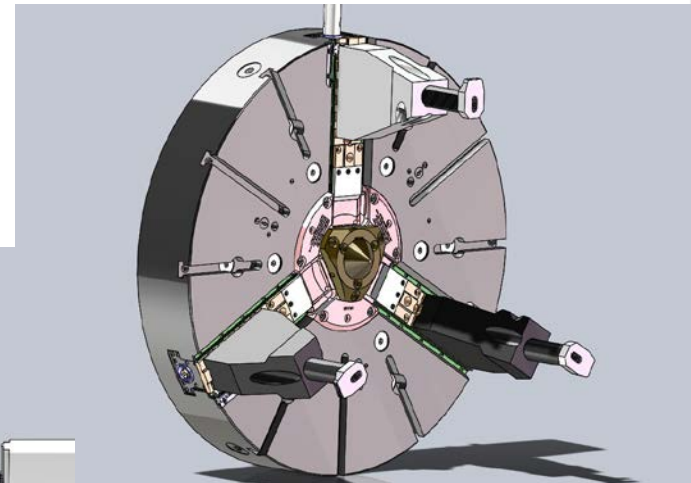
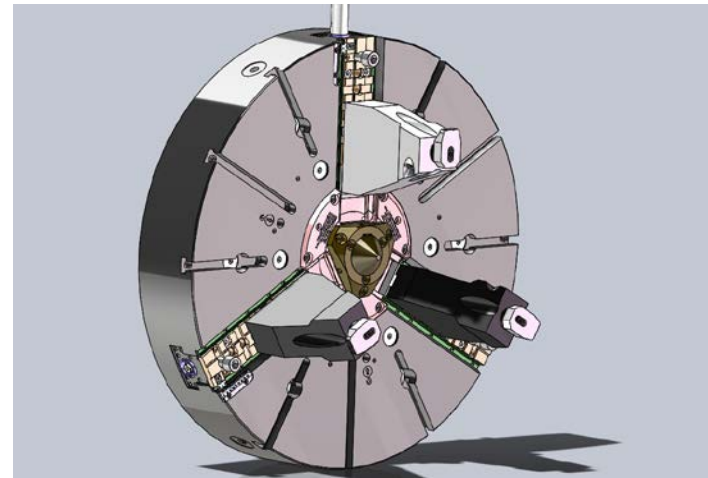
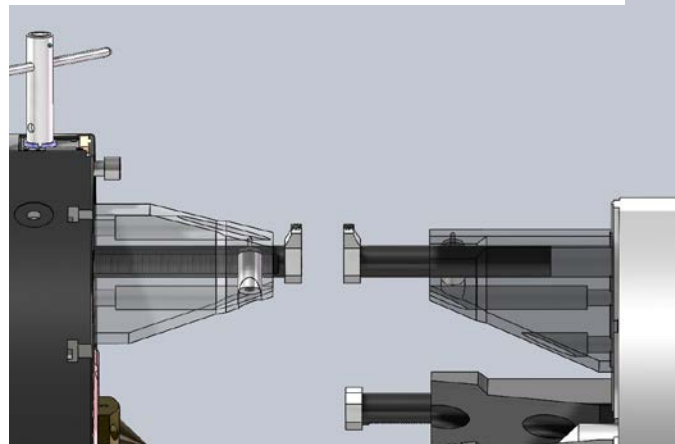
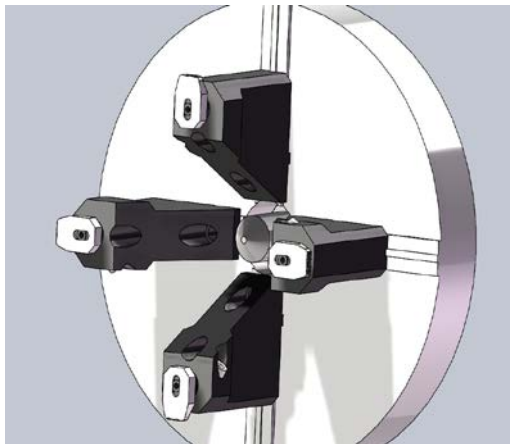
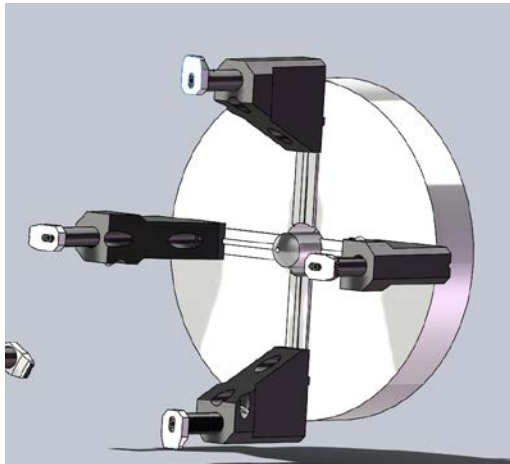
WHEELSET MACHINING

- Complete axle machining



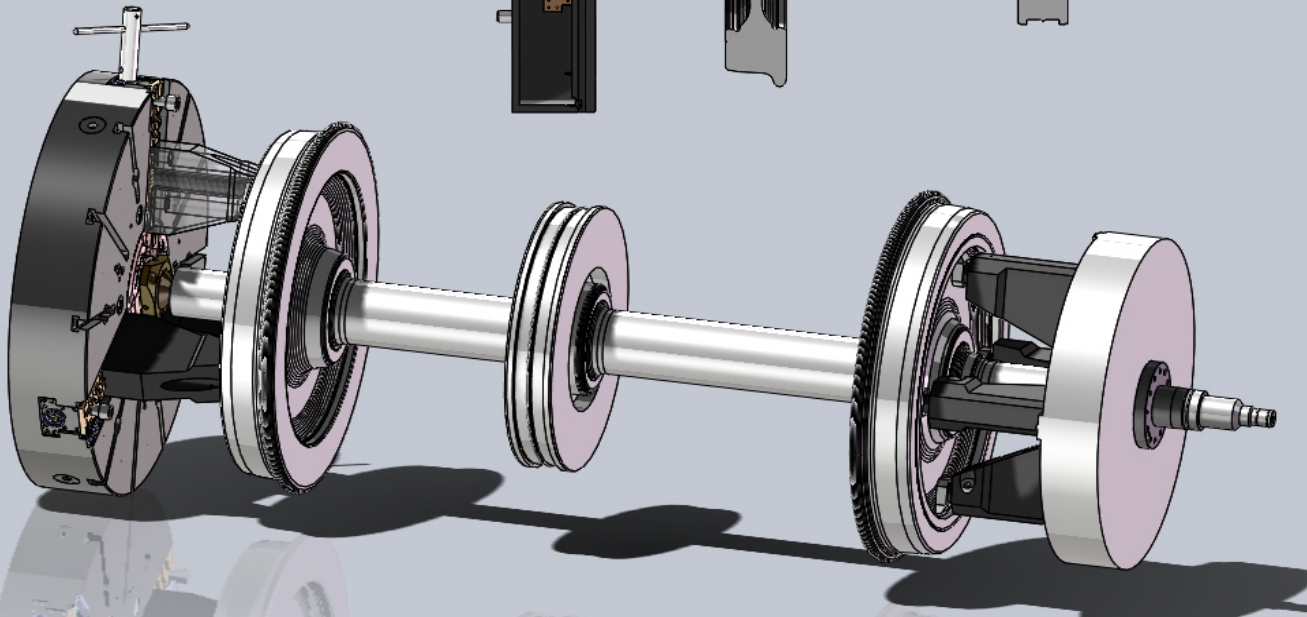
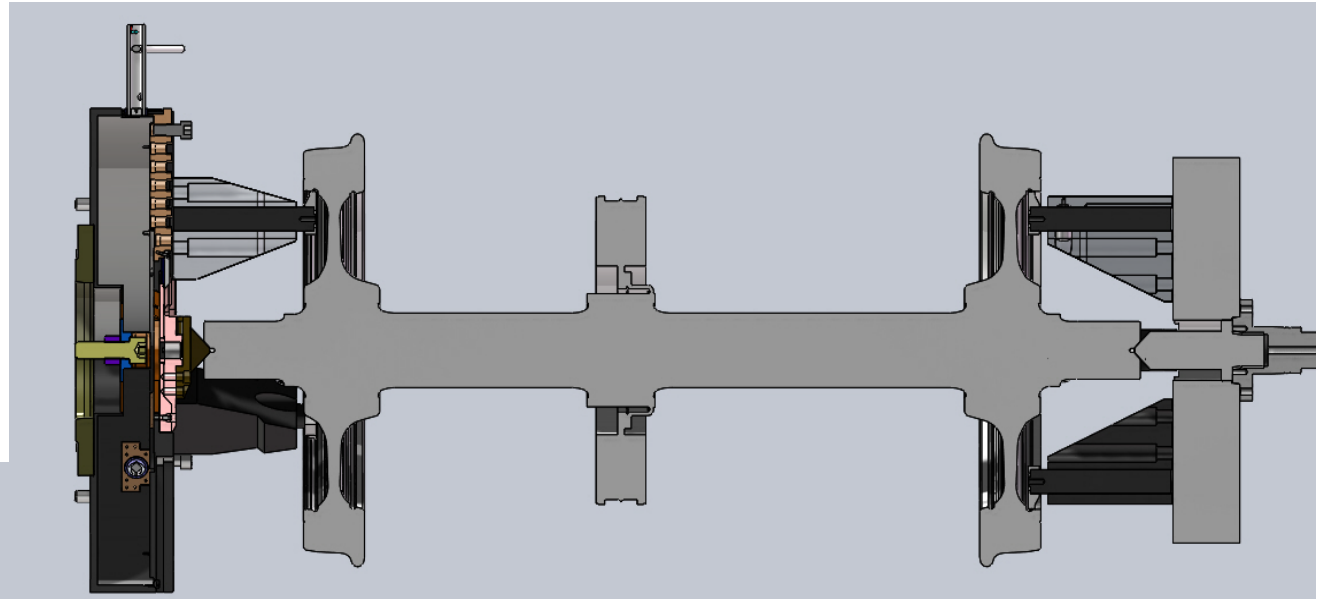
WHEELSET MACHINING

Chucking
Special jaws for clamping



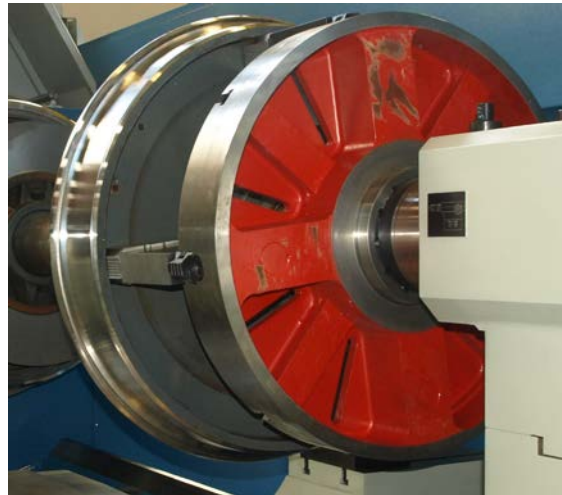
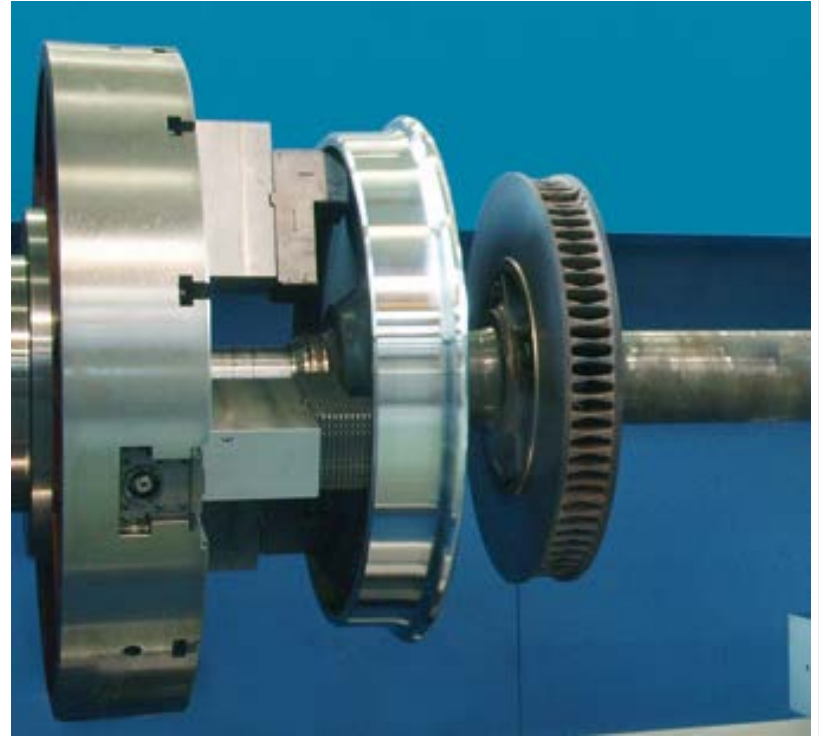
WHEELSET MACHINING

- Chucking
- Special jaws for clamping



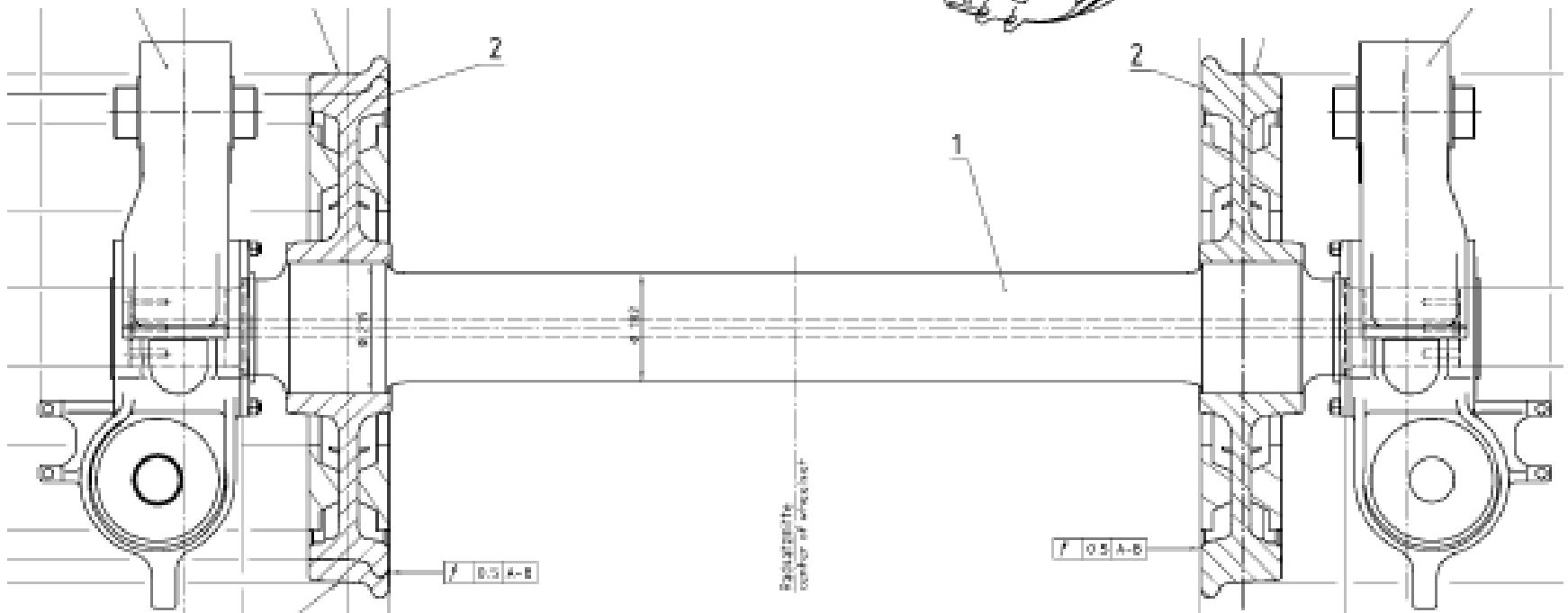
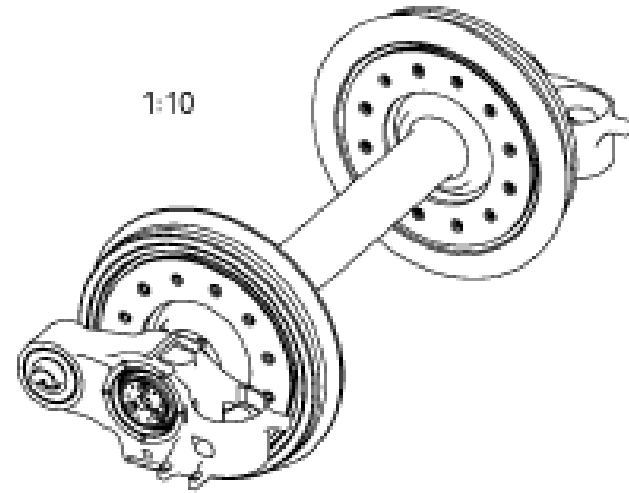
WHEELSET MACHINING

- Chucking
- Special jaws for clamping



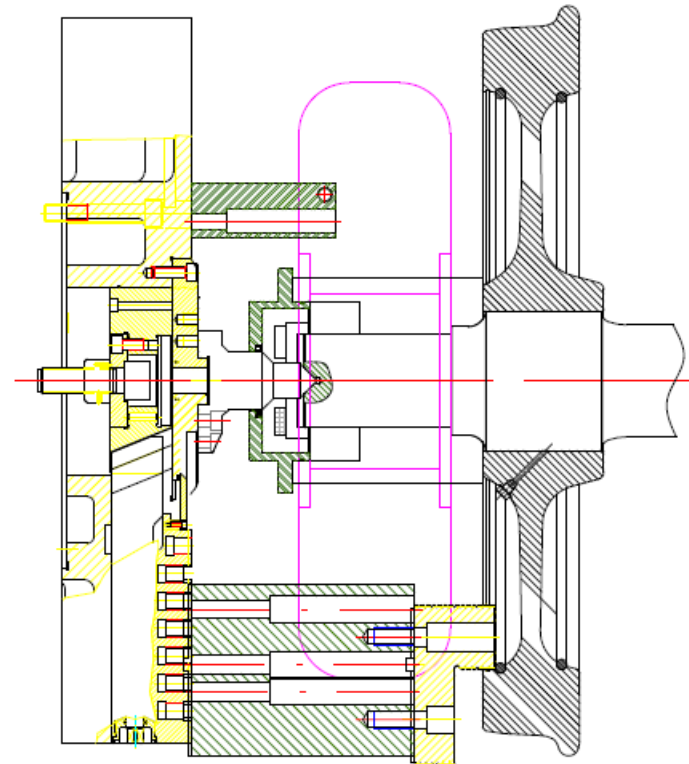
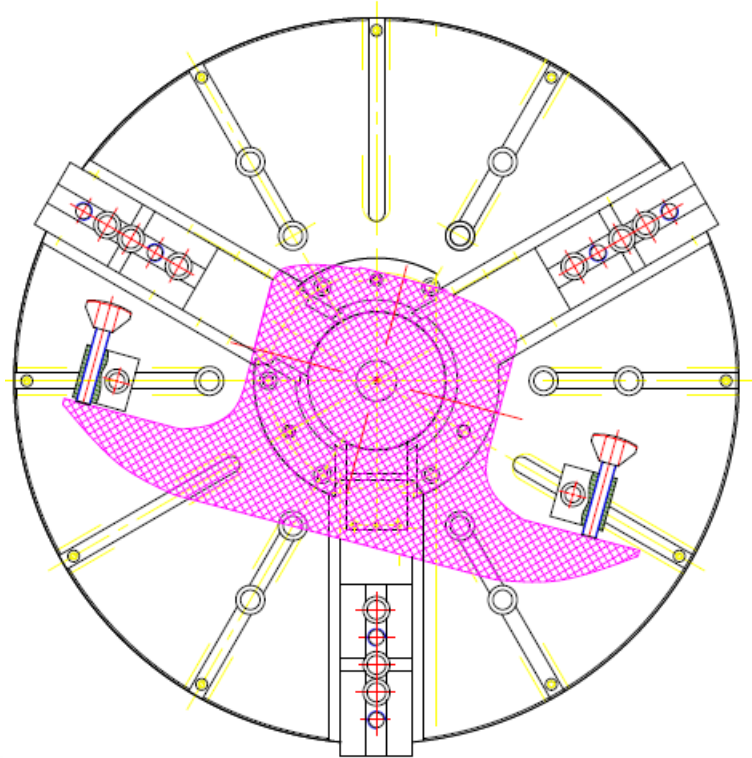
WHEELSET MACHINING

- Chucking the wheel set with the grease box mounted



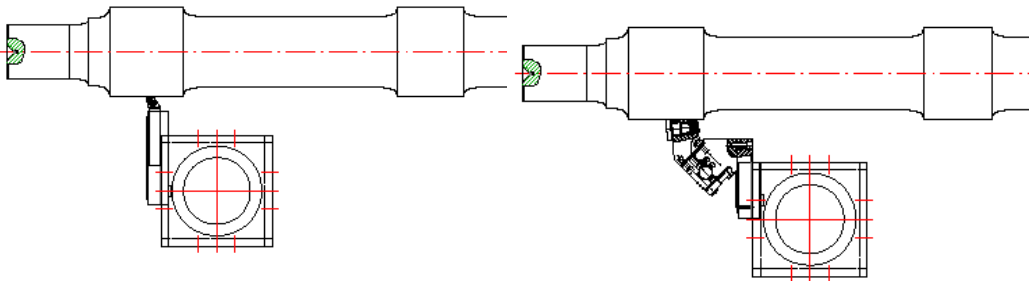
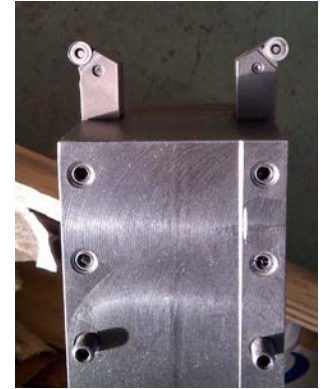
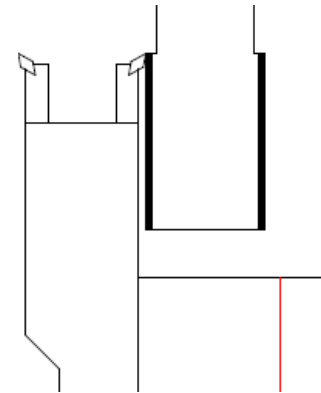
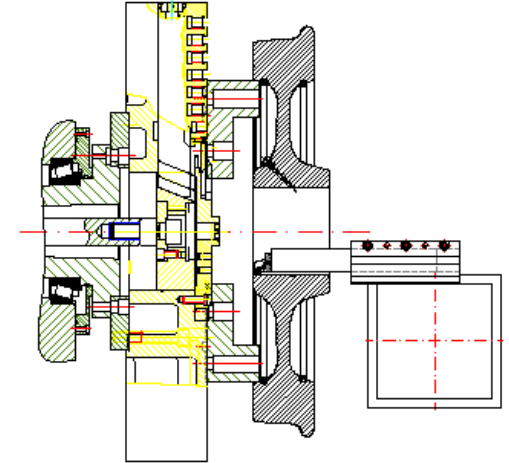
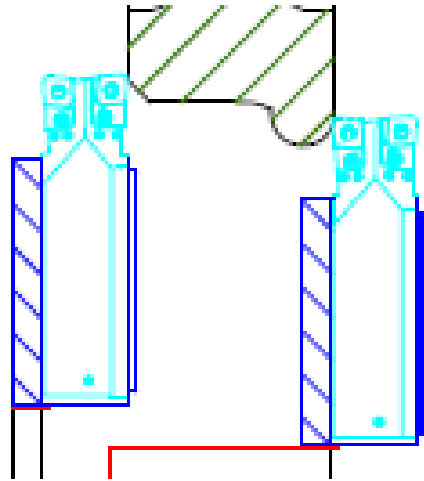
WHEELSET MACHINING

- Chucking the wheel set with the grease box mounted



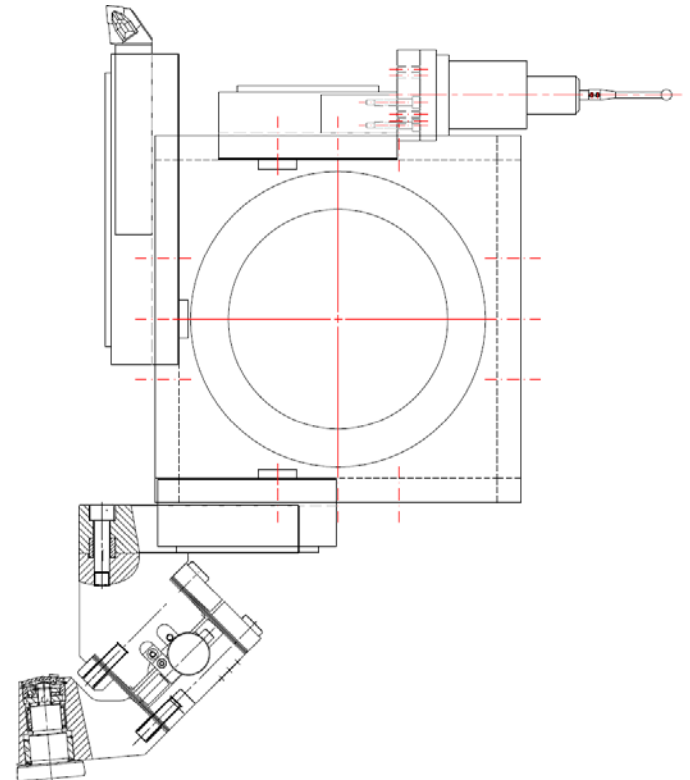
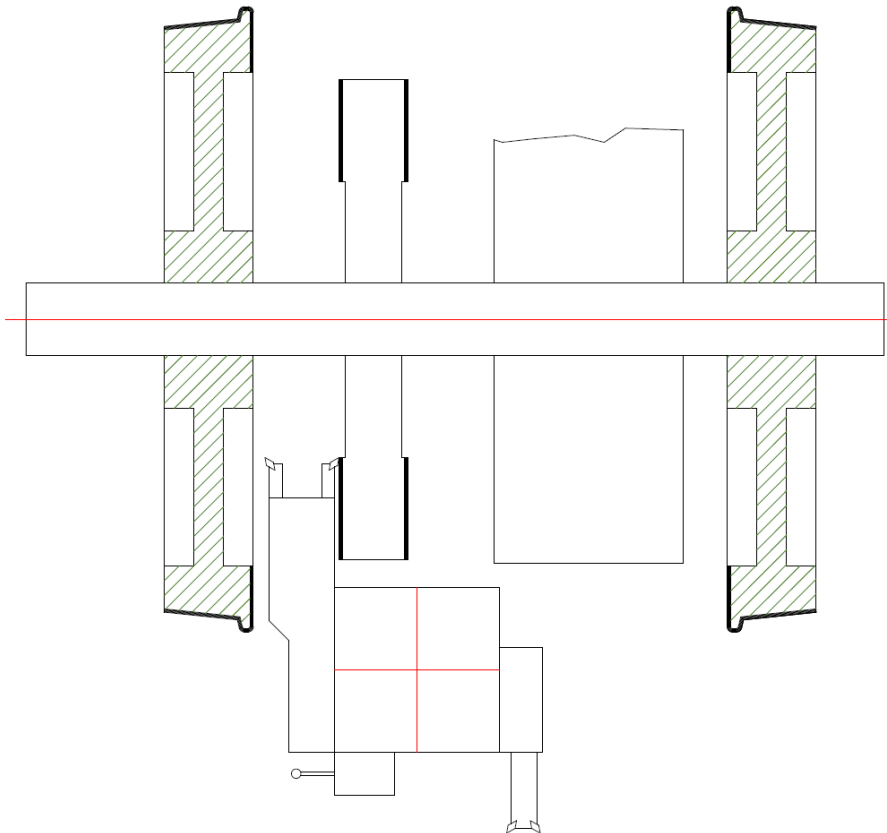
WHEELSET MACHINING

- Modularity of tool holders and tools
- Customized designs of toolholders to place all the tools avoiding collisions



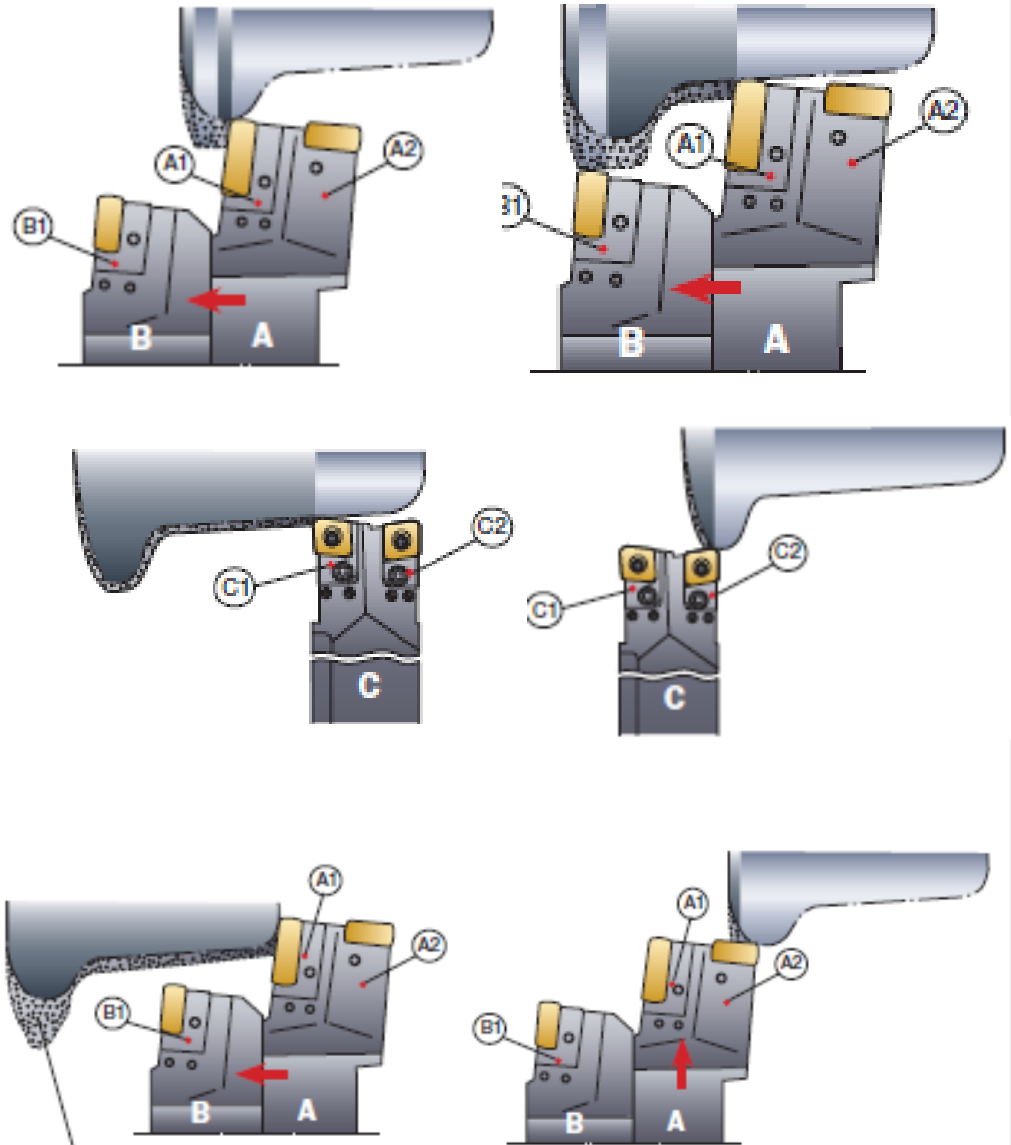
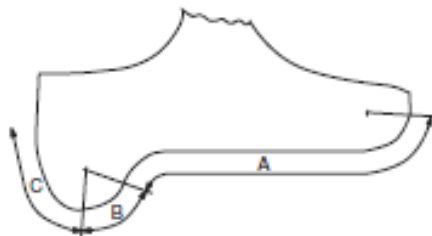
WHEELSET MACHINING

- Modularity of tool holders and tools
- Customized designs of toolholders to place all the tools avoiding collisions



WHEELSET MACHINING

- Specific tooling for railways

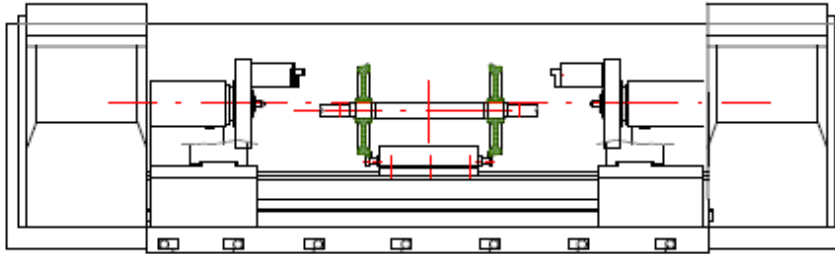


Material que se debe eliminar

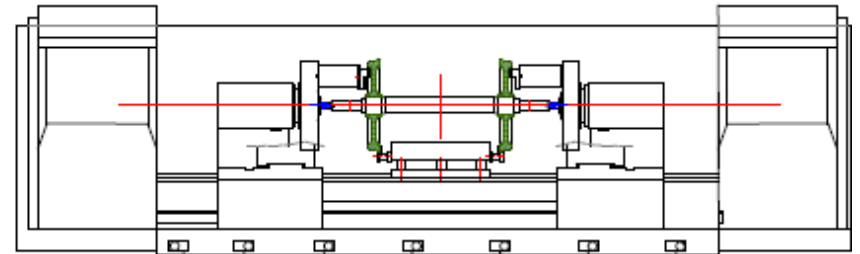
WHEELSET MACHINING

- Automatic solutions

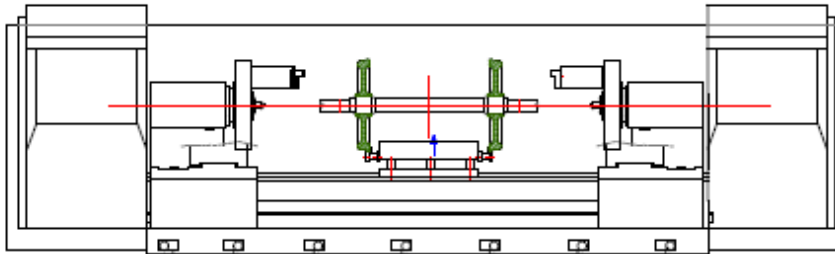
Paso 1: Posicionar el eje sobre el alimentador con la grúa



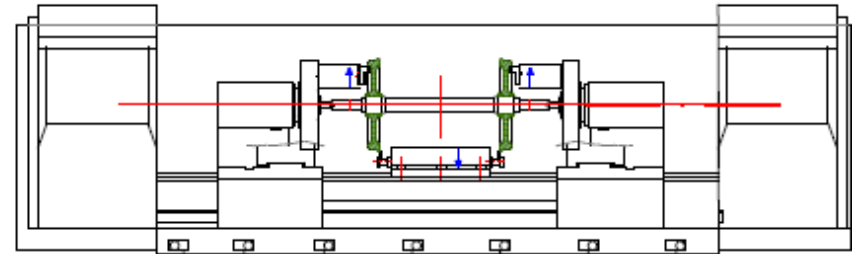
Paso 4: los puntos móviles terminan de cargar la pieza entre puntos



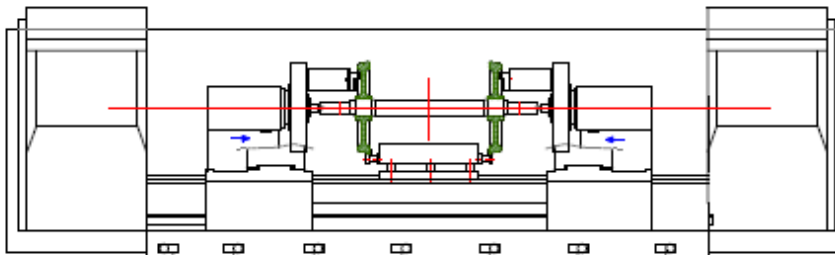
Paso 2: El alimentador eleva el eje hasta el centro máquina



Paso 5: Se abren las garras y el eje esta listo para empezar el mecanizado

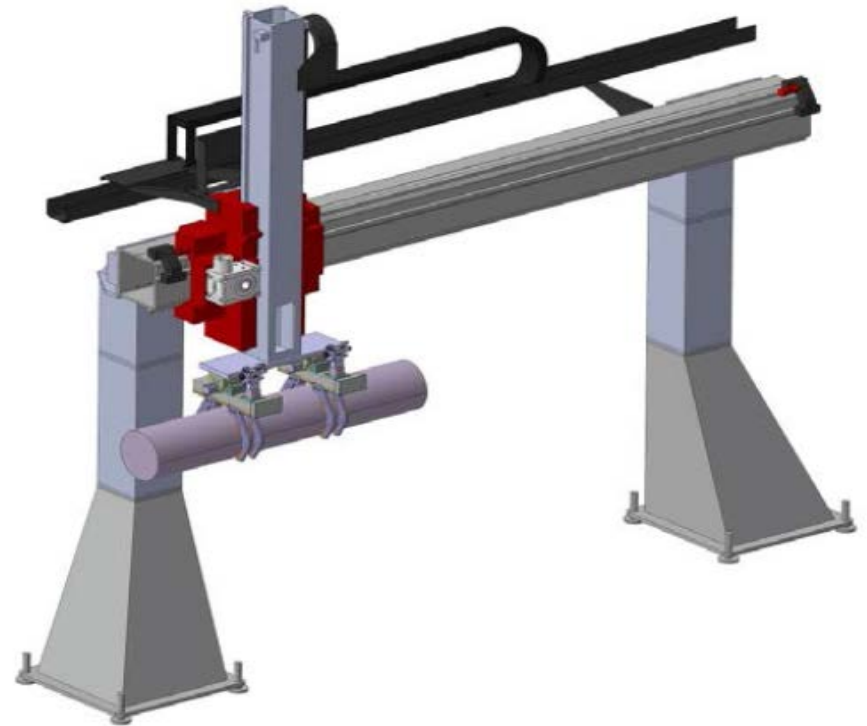
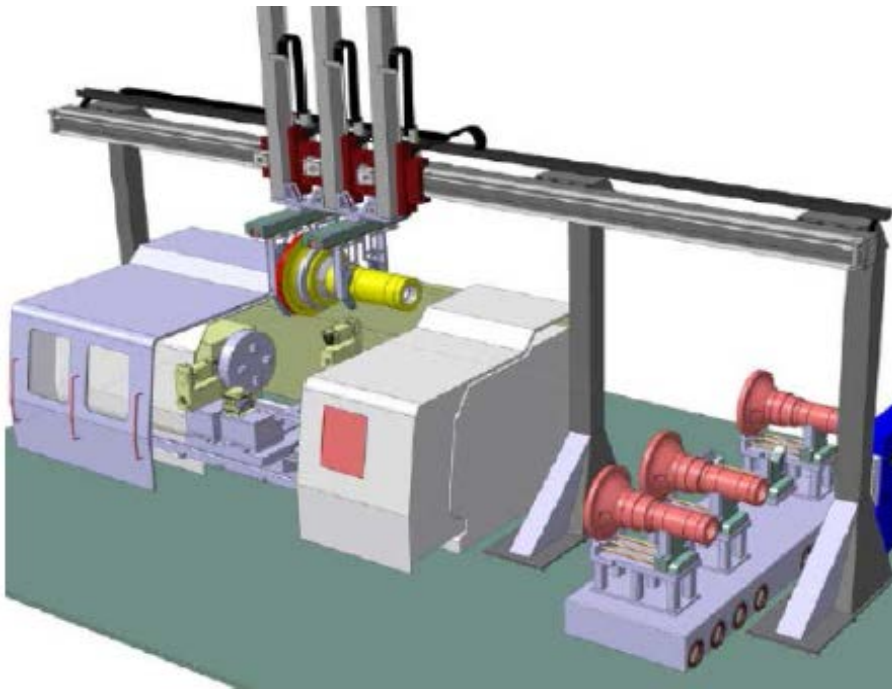


Paso 3: Ambos cabezales móviles de aproximan hasta una distancia cercana al eje y se bloquean automáticamente



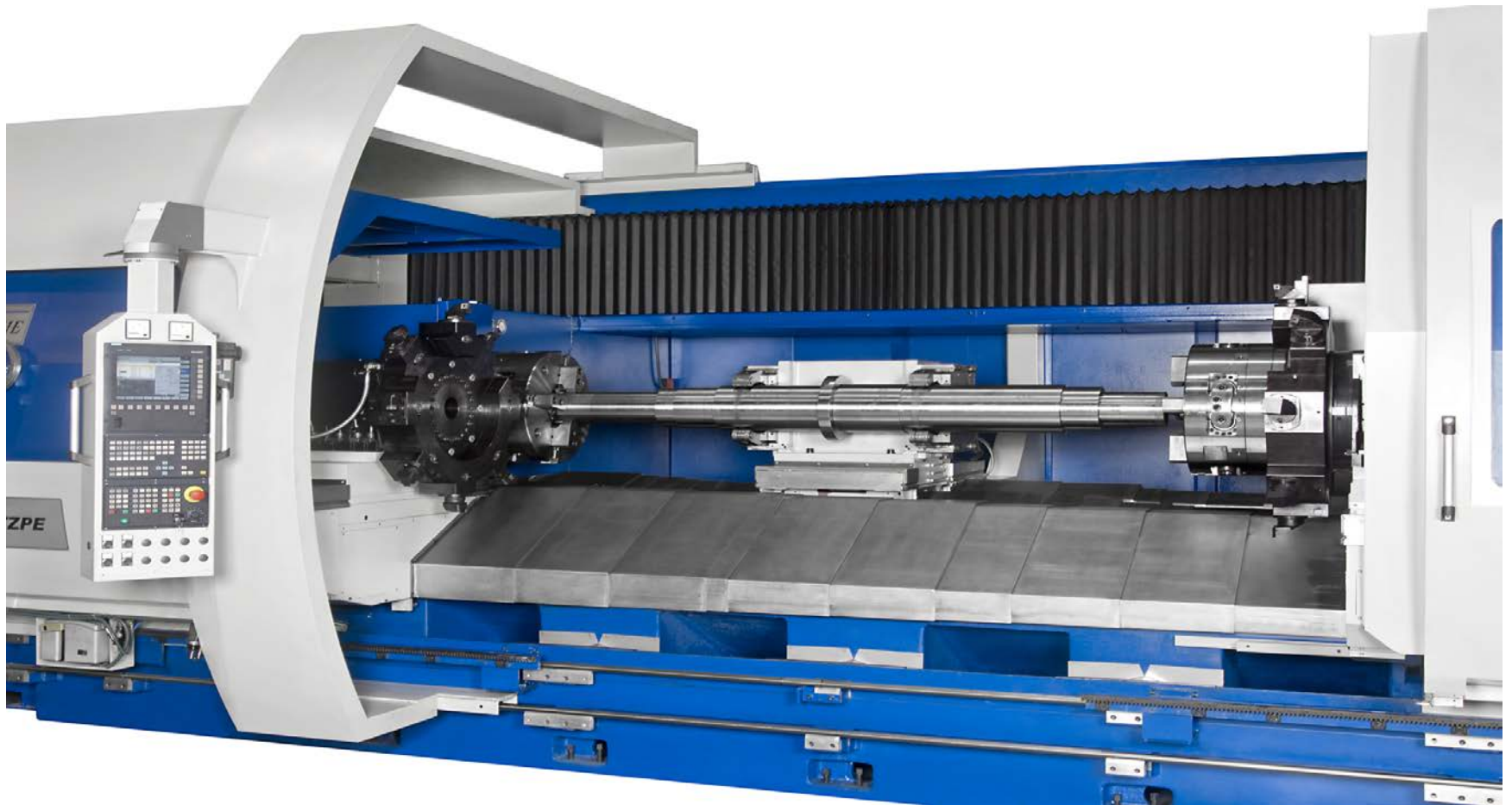
WHEELSET MACHINING

- Automatic loading solutions



WHEELSET MACHINING

- Machining of new axle



WHEELSET MACHINING

- Main Gurutzpe Railway references



GURUTZPE
ETXETAR group

gurutzpe.com