

COMPANY PRESENTATION



❑ “Leaders in Heavy Duty Horizontal CNC Lathes”

GURUTZPE TURNING SOLUTIONS S.L. is an European leading machine tool company specializing in the manufacture of heavy duty horizontal CNC lathes (workpieces $\varnothing^* 700 \div 4000$ mm & $5 \div 120$ t) for international industrial equipment firms.



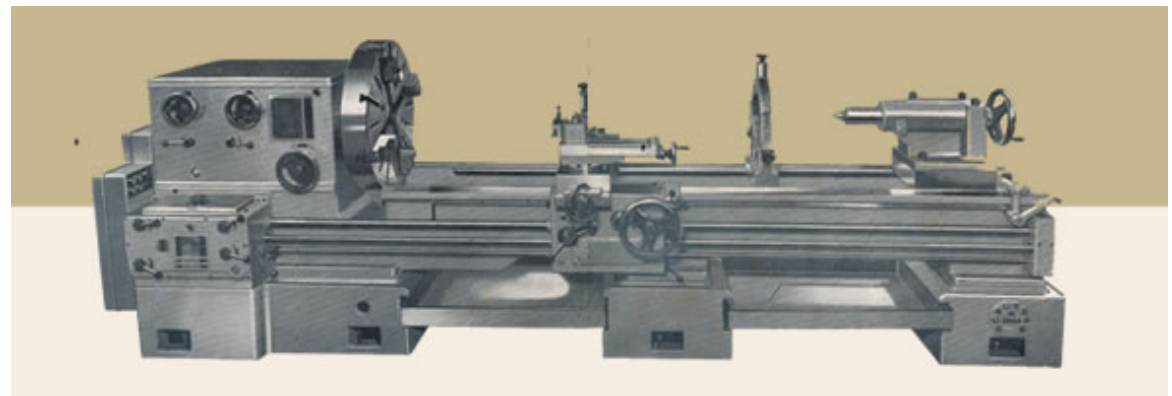
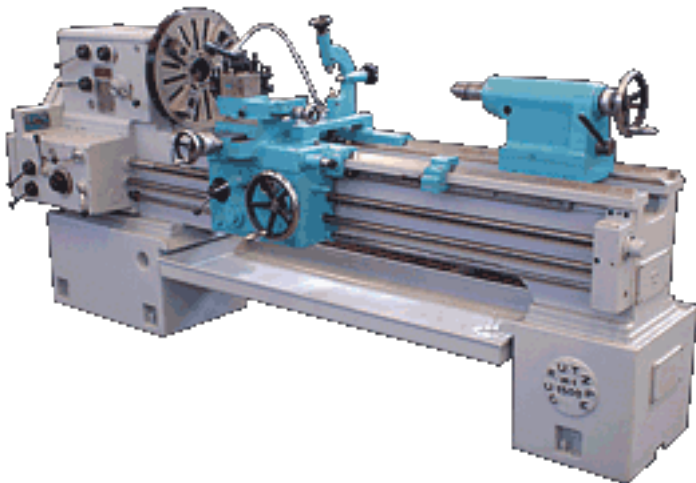
PRESENTATION



- ✓ **Local:** located since its foundation in **1955 in the Basque Country**, where 80% of the Spanish Machine Tool builders are concentrated, GURUTZPE counts on a team of **~50 employees**.
- ✓ **Global:** customers among the **main companies** in the oil & gas, steel, power generation and large equipment industries. With installations in **5 continents and over 25 countries**, exports represent around 90% of the turnover.
- ✓ **Integral:** including design, machining, sub-assembly, final assembly and acceptance tests. Additionally, we have a solid supply base for the entire value chain.
- ✓ **Solution oriented:** with 25% of the workforce devoted to engineering, we offer application based solutions, flexible and adapted to the specific needs of our customers.
- ✓ **Service:** quick and efficient response to our customers, both during and after the warranty period from our main premises or from our local service partners.
- ✓ **Sustainable:** solid shareholders' structure.

HISTORY

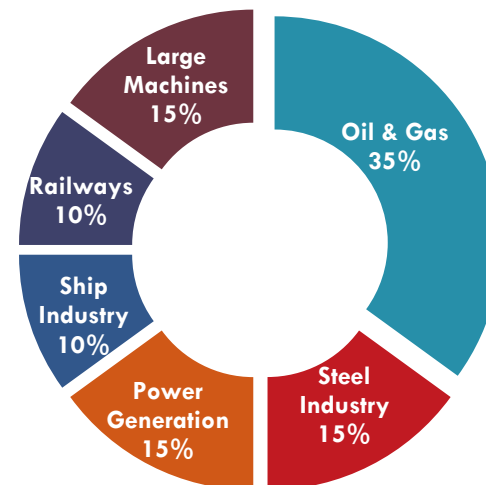
- ✓ Since the beginning of its activity at **1955**, with the manufacturing of the conventional lathes, Gurutzpe has installed successfully more than **6.000** lathes all over the world.
- ✓ Nowadays is considered as **one of the most important manufacturers in CNC heavy duty horizontal lathes in Europe.**



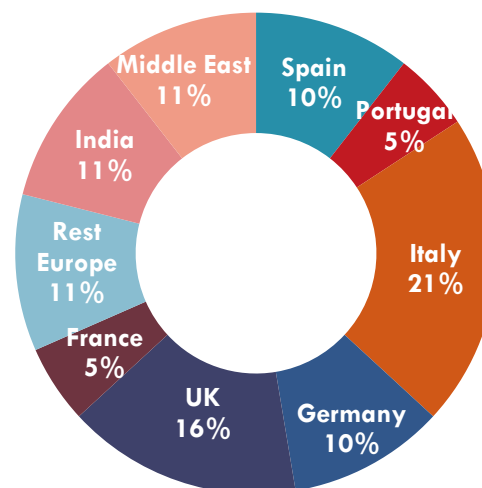
COMPANY INFORMATION

- **Line of Business:**
Design and Manufacture
Heavy Duty Horizontal CNC
Lathes.
- **Turnover:**
12.000.000€
- **Employees:**
50
- **Headquarters**
Itziar-Deba (Basque
Country) SPAIN
- **Commercial own offices:**
 - Gurutzpe China:
Beijing
 - Gurutzpe USA:
Troy, Michigan
- **Ownership:**
 - ETXE-TAR Group,
 - Sorazu family,
 - and management team.

TURNOVER by SECTORS



TURNOVER by MARKETS





Machine Tools
Automotive & Mid Duty
Power Gen. & Heavy Duty



Automation and handling
Assembly machines
Leak tests



Heavy Duty CNC Lathes
Multitasking
Turning solutions



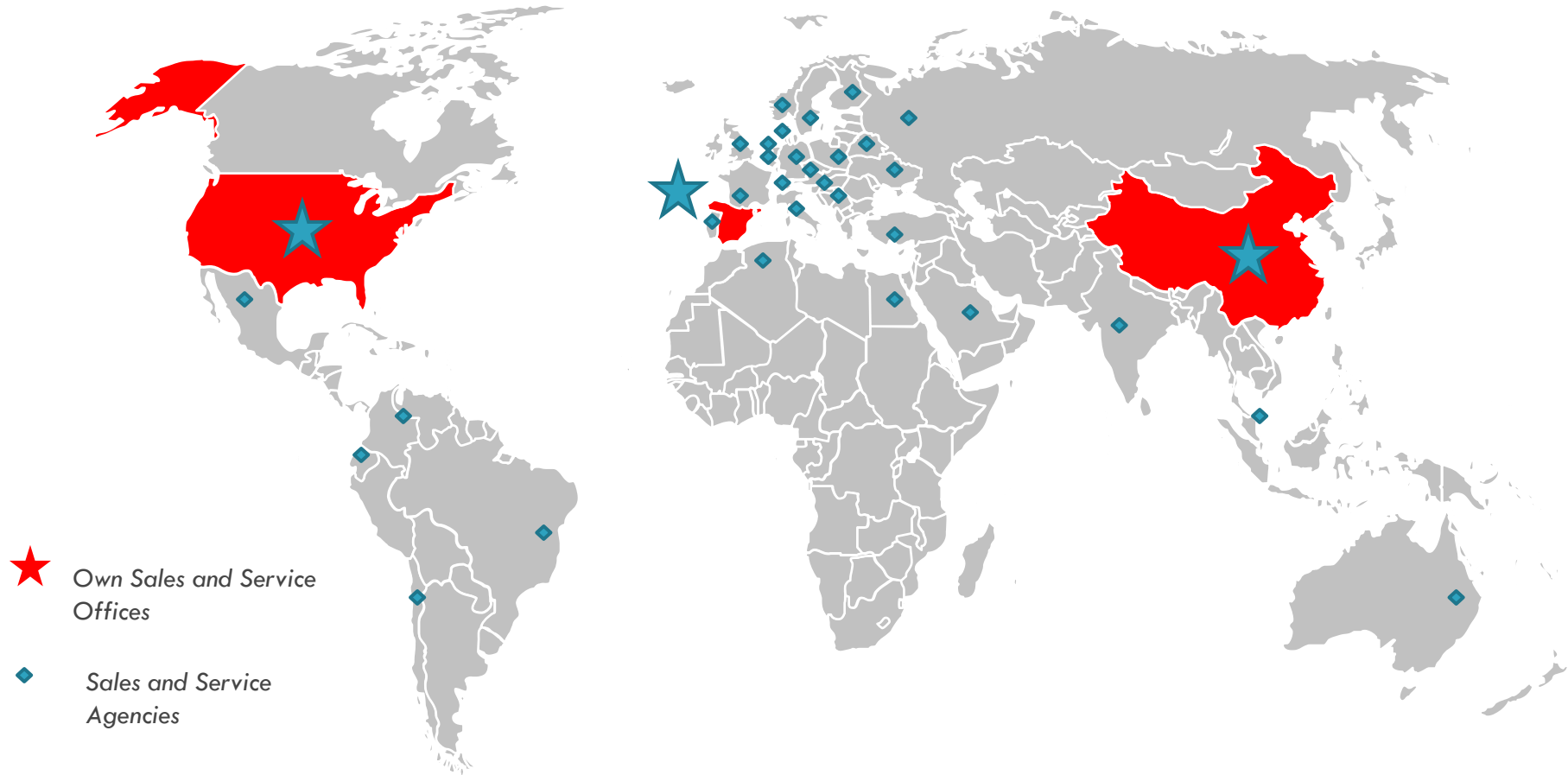
Wind power component
machining



PREMISES

- ✓ Assembly pavilion of 3.000 m²
- ✓ Facilities and productive means dimensioned for 20 M€.
- ✓ Easy flow of material and machines.
- ✓ GURUTZPE owned facilities.







Std machines:
platforms & modules



60 year experience &
6000 machines –
Turning Technology
Expertise

Personalized
turning
solutions

FLEXIBLE SOLUTIONS for TURNING **Std. Machines & Personalized Applications**

GURUTZPE is meeting customer demands and expectations through a series of **personalized solutions built with standard machines modules and standard platforms.**

Features

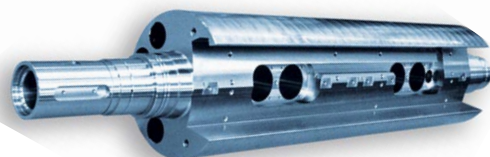
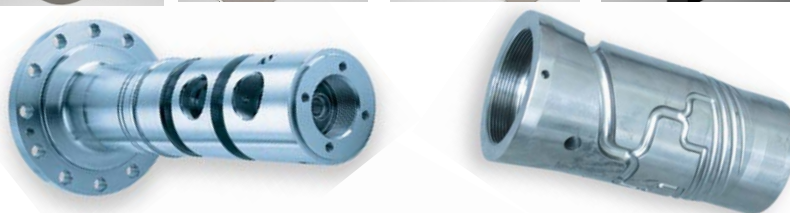
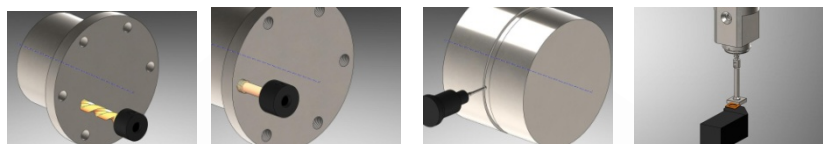
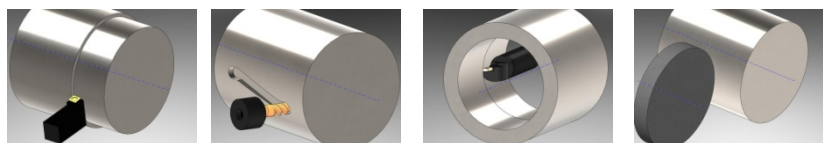
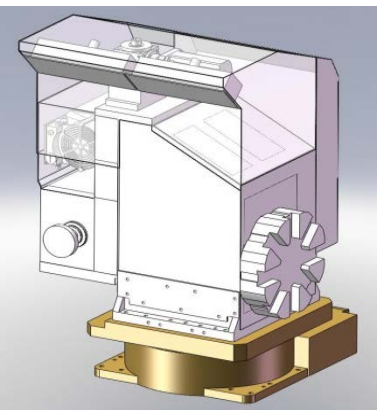
- ✓ The use of this standardization and modularity brings a cost reduction, speeds up the full project, minimizes risks, and improved quality and reliability.
- ✓ This level of standardization and modularity has been developed after more than 6000 lathes installed and operative successfully. This experience gives also the know-how to develop **personalized and highly efficient turning solutions.**
The best value for our customers.

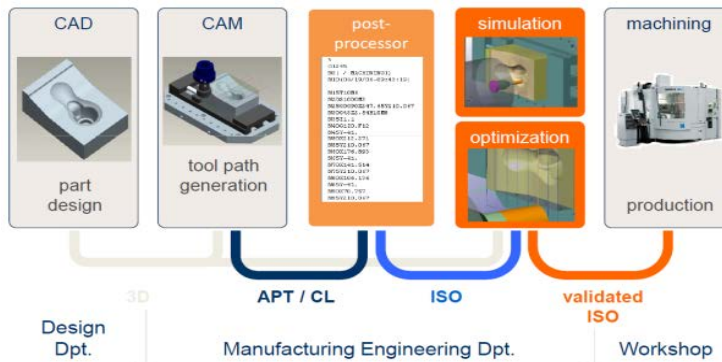
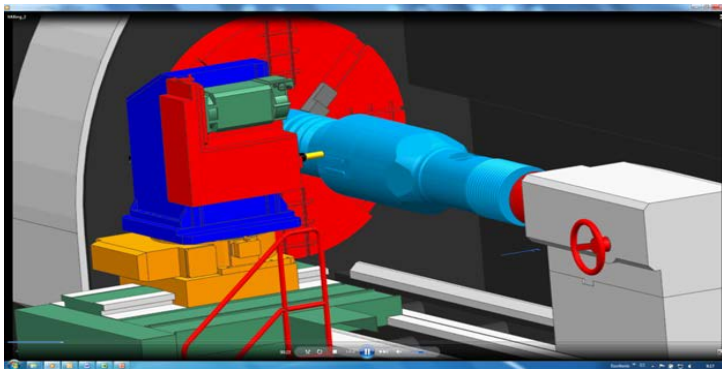
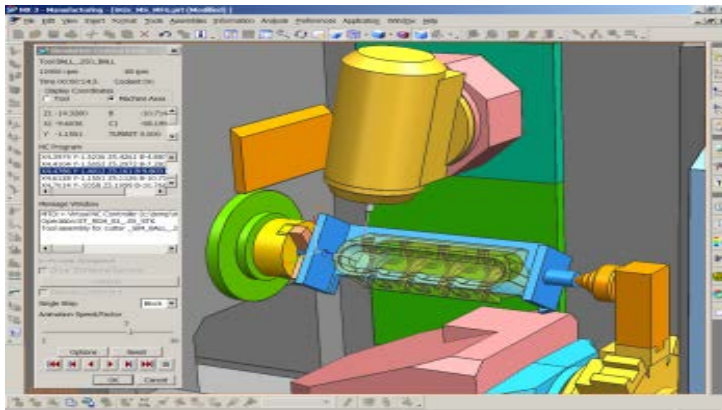
Advanced solutions – MULTITASKING Lathe

In order to improve the quality of the machined parts, reducing machining time and save costs of process, GURUTZPE implements various operations integrated into the base platform of the lathe, without losing the strength and reliability originals benefits.

Features

- ✓ Suitable for pieces of revolution containing milling or other operations, involving <40% of total process time.
- ✓ **Controlled axes:** X, Z, C, Y and B.
- ✓ Possibility of system **automatic tool changer**.
- ✓ **Additional operations:** boring / milling / drilling / threading & / grinding / honing / notching...
- ✓ **Milling performance:** tool clamping ISO-50 and motor 22 Kw/S1.
- ✓ **Benefits:** reduction in occupied floor space / operating personnel and programmers reduction / reduction of tools and fixtures / lower investment / process time reduced / handling risks.





Advanced Solutions – CAM & Simul & Optim

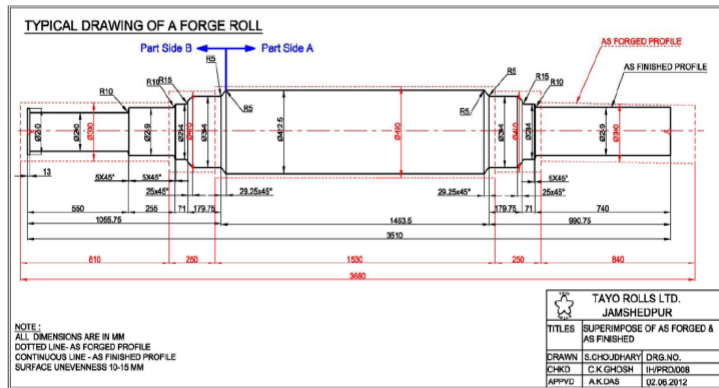
GURUTZPE implements on their machines its own working methodology of CAM-Simul-Optim integrating operations of "programming-verification-simulation-optimization" for the complete machine as built, minimizing machine down time.

Features

- ✓ CAM solution tailored to requirements and control of the machine.
- ✓ Recommended software NX CAM Express for SIEMENS.
- ✓ Postprocessor integrated for actual machines.
- ✓ 3D and Virtual Machines based simulation-G post processing code.

Benefits

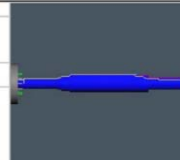
- ✓ Improved machining quality.
- ✓ Productivity improvements.
- ✓ Extending tool life.
- ✓ Avoid collisions.
- ✓ Simplicity when programming multitasking machines.
- ✓ Turnkey custom solutions for maximum machine performance.



Advanced Solutions – APPLICATIONS ENGINEERING

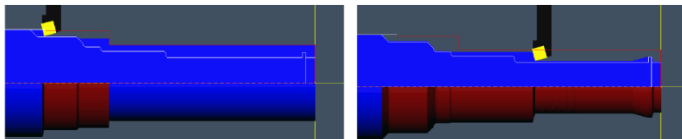
GURUTZPE develops and defines the best turning processes to provide a well balanced and greater value solutions to the needs of each project. Therefore, rather than responding to a defined machine specification, we like to be involved from an earlier stage so we can offer an optimum turning solution.

Machining Report for Side “B”

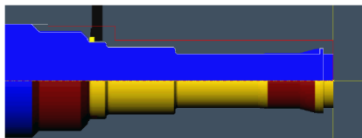
Part Name: 2_Rough_Side_B			
NC Program Number: 0,000	Stock Type: 2		
Name: Intermediate Roll	Diameter: 422,500		
Unit: Metric	Length(Part/Total): 3680,000/3680,000		
Overall Cycle Time: 01:13:34	Machine Name: Untitled		
Material Class: Condition:			

OPERATION	SPINDLE# TURN# HEAD#	STATION# TOOL# ORIENT.	TOOL	DEPTH	SPEED RPM/SPM	FEED UNIT PM/PR (XY/Z)	CYCLE TIME
Rough side B	1,000	S 1,000	CD_90_L15_R2.4	35,000	48,000	28,800	00:57:23
	1,000	T 1,000			70,000	0,600	
SemiRough	1,000	S 2,000	CD_80_S_L1.6	-	69,000	55,200	00:12:14
	1,000	T 2,000			100,000	0,800	
Rough side B Rev	1,000	S 5,000	CD_80_S_L1.6_Rev	10,000	69,000	55,200	00:02:51
	1,000	T 2,000			100,000	0,800	

Rough Machining



Semifinish Machining



Process

1. Analyze the **mix of parts** to be processed in the machine, the state of the same when starting and finishing searched.
2. Define **machining conditions** according to material, etc.
3. The selection of suitable **tooling** for the materials and geometry.
4. Design more efficient machining **sequences**.
5. **Time analysis**.
6. **Simulation** and optimization of operations and times.
7. 3D virtual model **verification** on parts & machines.
8. Generating **reports** and videos.
9. Selection and **configuration of machine** according to previous conclusions.

Benefits

- ✓ Selection and optimal machine configuration.
- ✓ Contractual guarantee of success machining.
- ✓ Predictable ROI.
- ✓ Reports contrasted to investment plans.

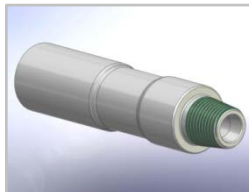
MARKETS

Based on the domestic market, GURUTZPE expanded internationally, **exporting 90% of its production.**

SECTORS

In its long history, has developed GURUTZPE turning solutions for multiple sectors, and is primarily focused on the following.

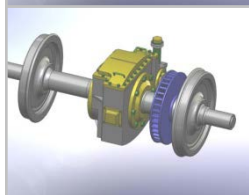
Oil & Gas



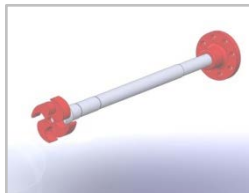
Power generation



Railways

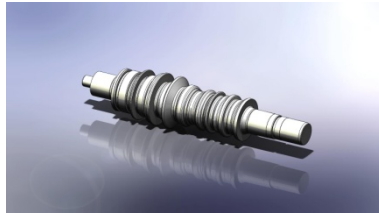


Shipyards and large equipment



MARKETS

Steel



Turbines
shafts



Heavy
Industrial
equipment



“ Your partner for Turning Solutions”



Thanks for your attention.