



Ningbo Haitian Precision Machinery Co., Ltd.

H.Q.& Production Base1
No. 1688 Haitian road, Xiaogang, Beilun, Ningbo-315801, China.
Tel: +86-574-86182580/86182525
E-mail: hision@mail.haitian.com

Production Base2
No.235, Huangshan Road,Beilun District, Ningbo-315801 China.

Production Base3
No.188, Baodao Road, Lin`gang Industrial Zone, Changxing Island,
Dalian-116317 China.

Haitian Precision Machinery (HONGKONG) Co., Ltd.

Office Address:
Unit,12/F, Seabright Plaza, 9-23 Shell Street, North Point, HONGKONG.

Website:
www.haitianprecision.com



NEW 2020-EN-L-B The text description, pictures and technical parameters in the sample are for reference only, and the changes due to technological development are subject to change without notice.

**VERTICAL MACHINING CENTER
DOUBLE COLUMN MACHINING CENTER**

V180 / VMC II / GU II / GUe
GLU II / GLU (e) / GRU II / GNU

HISION



V180



VMC II Series

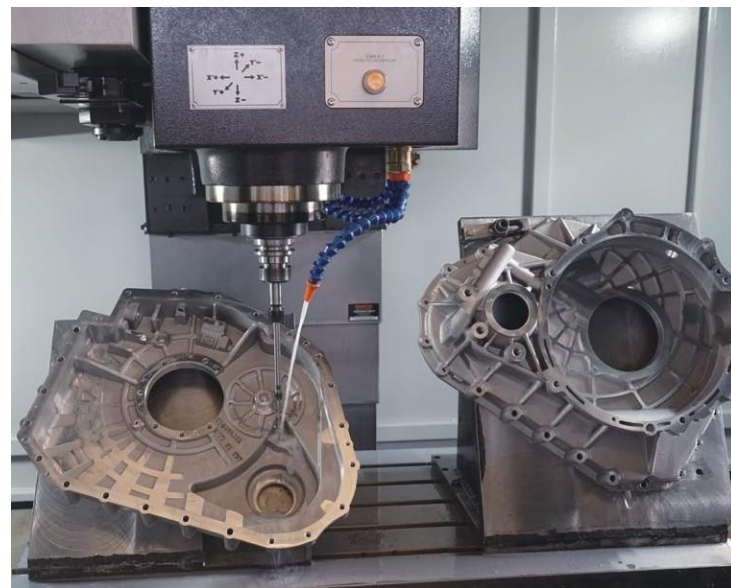



GU II Series



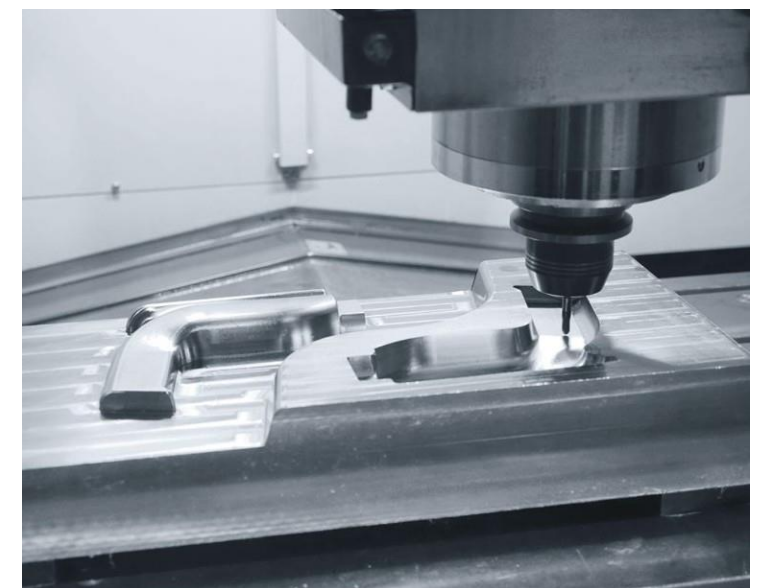
Vertical Machining Center

VMC II series vertical machining center was designed and developed independently by absorbing and digesting advanced technologies domestic and abroad on the basis of the existing machine of Haitian Precision company. It can be used in the fields of automobile parts, plastic machinery, construction machinery , etc.

Double Column Machining Center

On the basis of inheriting the double column structure and market demand, the product has newly introduced with boxway ram structure, which further expands the advantages of the double column vertical machining center and the traditional machining center, bringing a new experience to customers.





Hision Built-in Spindle



GLU II / GLU (e)13/16 Series



GLU / GLU (e)18/23/28 Series (Full enclosure option)

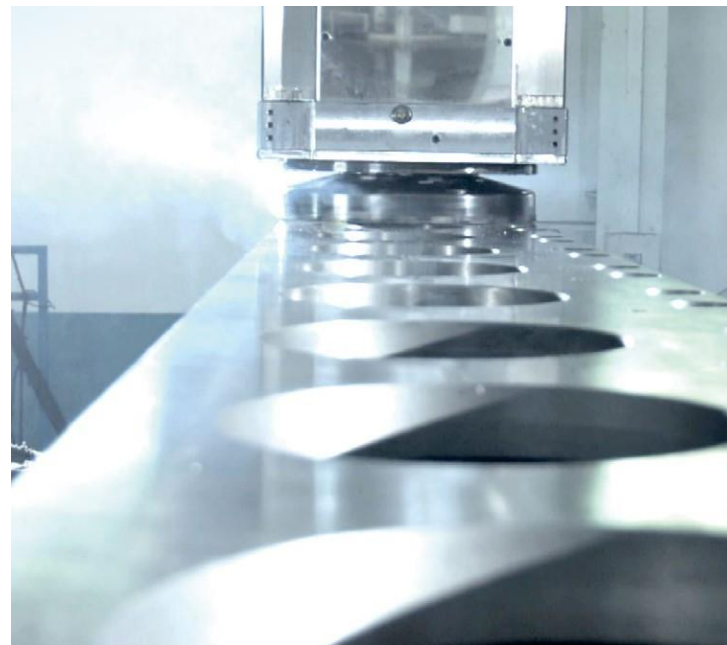


GRU II 28/32/36 Series GNU 28/32/36 Series



Fixed Crossrail Double Column Machining Center

Inheriting the structural characteristics of strong rigidity and wide processing range of traditional gantry products, integrating advanced technical elements, and pursuing the development concept of high efficiency, high precision, and energy saving. Create new generation of U series gantry machining center. Widely used in mold, aerospace, rail transportation, automotive, house appliances, medical and other high-end manufacturing industries.



• GLU II Series

GLU II series adopt full gear transmission and special Z-axis boxway layout technology (Haitian precision company patented technology) to achieve the perfect integration of strength and high-precision processing.

• GLUe Series

GLUe series adopt the structure of built-in spindle with the heavy cutting ability, which brings customers the processing experience of high torque, high speed and low vibration.

• GLU Series

GLU series adopt full gear transmission ram, two speed shift gear box to achieve high speed, high torque cutting.

• GRU II / GNU Series

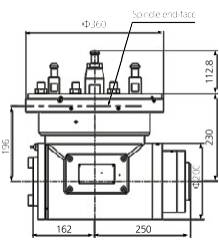
GRU II /GNU series adopts square ram, which has high rigidity structure, strong and stable cutting performance.



Attachment For Various Application



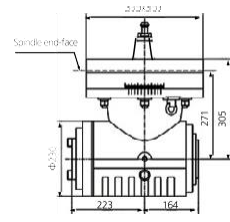
90° auto milling head



Max Power: 15kW
Max Speed: 2000rpm



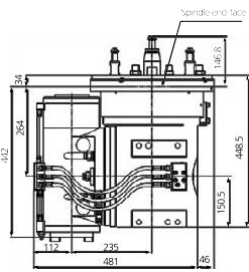
90° manual milling head



Max Power: 20kW/15kW (OPT)
Max Speed: 2000rpm



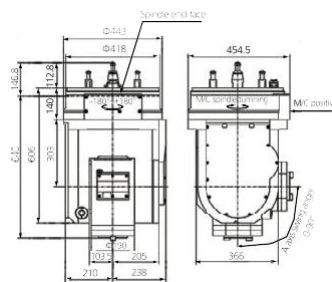
Semi auto 3+2 milling head



Max Power: 15kW
Max Speed: 2000rpm



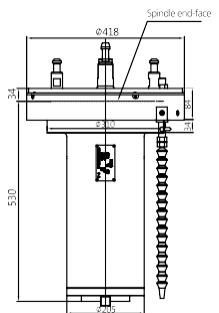
Auto 3+2 milling head



Max Power: 15kW
Max Speed: 4000rpm



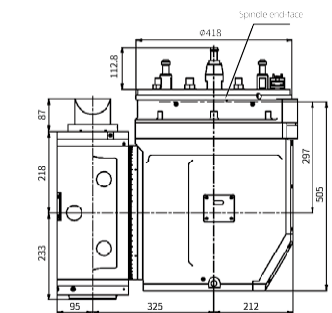
Automatic extended milling head



Max Power: 20kW
Max Speed: 2000rpm



Automatic universal Milling head



Max Power: 15kW
Max Speed: 4000rpm

Automatic Attachment Charger



Two stations auto head storing shelf



Attachment head holder

V180 / VMC II

Itens	Unid	V180	VMC760 II	VMC850 II	VMC1000 II	VMC1200 II
» Capacidade da Máquina						
Curso X	mm	500	760	850	1000	1200
Curso Y	mm	400	400	500	600	600
Curso Z	mm	330	500	500	600	600
Nariz do fuso p/ superfície mesa	mm	150-480	150-650	150-650	150-750	150-750
» Mesa						
Dimensões	mm	650x400	900x400	1000x500	1200x600	1300x600
Carga	t	0.255	0.3	0.6	0.8	0.6
Ranhura	mm	14x125x3	18x125x3	18x80x5	18x100x5	18x100x5
» Avanços						
Rapido (X/Y/Z)	m/min	48/48/48	36/36/36	36/36/36	36/36/36	36/36/36
Corte (X/Y/Z)	m/min	30/30/30	15/15/15	15/15/15	15/15/15	15/15/15
» Fuso						
Velocidade máxima	rpm	20000	8000	8000	8000	8000
Potência	kW	3.7/5.5	5.5/7.5	7.5/11	7.5/11	7.5/11
Torque	N.m	11.7/17.5	52.5/71.6	71.6/105	71.6/105	71.6/105
Cone		BT30	BT40	BT40	BT40	BT40
Pino		MAS-P30T-1	P40T - I -MAS403	P40T - I -MAS403	P40T - I -MAS403	P40T - I -MAS403
» Magazine de Ferramentas						
Capacidade	T	16	24	24	24	24
Tipo		-	Arm type	Arm type	Arm type	Arm type
Diam máximo (Adjacente livre)	mm	Φ60 (Φ80)	Φ78 (Φ150)	Φ78 (Φ150)	Φ78 (Φ150)	Φ78 (Φ150)
Comprimento máximo	mm	250	300	300	300	300
Peso máximo	kg	3	7	7	7	7
Tempo de troca	s	1.6	2.5	2.5	2.5	2.5
» Outros						
Potência	kVA	15	25	25	25	30
Peso	t	2.5	5.5	6	6.5	7
Dimensões (C x L X A)	cm	162x208x238	230x325x255	250x340x255	280x355x265	315x355x270

V180 Standard Configuration	MC II tandard Configuration	V180 Option Configuration	VMC II Option Configuration
1. Controller: M80B	1. Controller: Mitsubishi M80B	1. Controller: M80A	1. Controller: FANUC Oi
2. Spindle air blow	2. 8000rpm mechanical spindle	2. CNC rotary talbe (4th axis)	2. Controller: MITSUBISHI M80A
3. Spindle air seal	3. ATC	3. Pre-researve CNC rotary table interface	3. Air conditioner
4. Spindle oil chiller	4. Pneumatic,hydraulic and lubrication system	4. Tool setter-TS27R	4. Spindle oil chiller
5. Hydraulic and lubrication system	5. Cutting cooling	5. Full enclosure with top cover	5. Auto door
6. Coolant system	6. Internal helix chip conveyor	6. Oil mist collector	6. ATC protection door
7. Rigid tapping	7. Full enclosure with top cover	7. Workpiece air blow	7. CNC rotary table (4th)
8. Direct drive spindle 20000rpm	8. Air gun	8. Workpiece probe	8. Workpiece probe(2D)
9. 16T disc type ATC	9. 3-color signal lamp, working light	9. Air gun	9. Tool setter
10. 3-color signal lamp,working light	10. Standard accessories	10. Water gun	10. Water gun
			11. Coolant through spindle (2-6MPa)
			12. Spindle ring spray
			13. Oil skimmer
			14. Oil mist collector
			15. External chain type chip conveyor and trolley
			16. External scrap type chip conveyor and trolley
			17. Directly drive spindle 10000rpm/12000rpm



GU II / GUE

Ítems	Unid	GU5 II	GU6II	GUE5	GUE6
>> Capacidade da Máquina					
Curso X	mm	1500	1500	1500	1500
Curso Y	mm	700	850	700	850
Curso Z	mm	600	700	600	700
Distância entre as colunas	mm	1580	1580	1580	1580
Nariz do fuso p/ superfície mesa	mm	205-805	205-905	150-750	150-850
>> Mesa					
Dimensões	mm	1400X700	1500X850	1400X700	1500X850
Carga	t	2	3	2	3
Ranhura	mm	18X150X5	18X160X5	18X150X5	18X160X5
>> Avanços					
Rápido (X/Y/Z)	m/min	12/12/10	12/12/10	20/20/10	20/20/10
Corte (x/Y/Z)	m/min	20/20/15	20/20/15	24/24/15	24/24/15
>> Fuso					
Tipo de acionamento		Gear Box	Gear Box	Built-in Spindle	Built-in Spindle
Velocidade máxima	rpm	6000	6000	6000	6000
Potência	kW	3.7/5.5	5.5/7.5	15/30 (low speed) 22/30 (high speed)	15/30 (low speed) 22/30 (high speed)
Torque	N.m	11.7/17.5	52.5/71.6	318/774 (low speed) 233/318 (high speed)	318/774 (low speed) 233/318 (high speed)
Cone		BT50	BT50	BT50	BT50
Pino		P50T- II -MAS403 (BT50-60°)	P50T- II -MAS403 (BT50-60°)	P50T- II -MAS403 (BT50-60°)	P50T- II -MAS403 (BT50-60°)
>> Magazine de Ferramentas					
Capacidade	T	24	24	24	24
Tipo			Arm Type	Arm Type	Arm Type
Diam máximo (Adjacente Livre)	mm	Φ110 (Φ200)	Φ110 (Φ200)	Φ110 (Φ200)	Φ110 (Φ200)
Comprimento máximo	mm	300	300	300	300
Peso máximo	kg	20	20	20	20
>> Outros					
Potência total instalada	kVA	40	65	40	65
Peso	t	13	13.7	13	13.7
Dimensões (C x L x A)	cm	440X335X410	440X335X420	440X335X410	440X335X420

Configuração Padrão

1. Controller: MITSUBISHI M80B (only for GUE)
2. Controller: FANUC 0i (only for GUII)
3. Spindle oil chiller
4. Pneumatic, hydraulic and lubrication system
5. Cutting cooling
6. Internal helix chip conveyor
7. External chain type chip conveyor and troller
8. Full enclosure without top cover
9. 3-color signal lamp, working light
10. Standard accessories
11. 6000rpm HISION built-in spindle (only for GUE)

Configuração Opcional

1. 24T ATC
2. CNC rotary table (4th)
3. Coolant through spindle (2-6MPa)
4. Linear scale
5. Workpiece probe (2D)
6. Tool setter
7. Oil skimmer
8. Ar conditioner
9. Full enclosure with top cover
10. Water gun
11. Oil mist collector
12. Manual 90° milling head (4x90°)
13. Air gun
14. Controller: MITSUBISHI M80A (only for GUE)
15. Controller: FANUC 0i (only for GUE)
16. 8000rpm HISION built-in spindle (only for GUE)
17. Spindle ring spray (only for GUE)

GLU II

Ítems	Unid	GLU13 II X 16	GLU13 II X 21	GLU13 II X 30	GLU16 II X 20	GLU16 II X 25
>> Capacidade da Máquina						
Curso X	mm	1600	2000	3100	2000	2500
Curso Y	mm	1300	1300	1300	1500	1500
Curso Z	mm	700	700	700	700	700
Distância entre as colunas	mm	1380	1380	1380	1580	1580
Nariz do fuso p/ superfície mesa	mm	205-905	205-905	205-905	255-955	255-955
>> Mesa						
Dimensões	mm	1300X1800	1300X2200	1300X3000	1500X2000	1500X2500
Carga	t	4	5	7	6	8
Ranhura	mm	22X160X8	22X160X8	22X160X8	22X160X9	22X160X9
>> Avanços						
Rápido (X/Y/Z)	m/min	12/12/10	12/12/10	12/12/10	12/12/10	12/12/10
Corte (x/Y/Z)	m/min	15/20/15	12/20/15	12/20/15	12/20/15	12/20/15
>> Fuso						
Tipo de acionamento		Gear Box	Gear Box	Gear Box	Gear Box	Gear Box
Velocidade máxima	rpm	6000	6000	6000	6000	6000
Potência	kW	15/18.5	15/18.5	15/18.5	15/18.5	15/18.5
Torque	N.m	316/522	316/522	316/522	316/522	316/522
Cone		BT50	BT50	BT50	BT50	BT50
Seção Ram	mm	350X350	350X350	350X350	350X350	350X350
>> Magazine de Ferramentas						
Capacidade	T	24	24	24	24	24
Tipo		BT50	BT50	BT50	BT50	BT50
Diam máximo (Adjacente Livre)	mm	Φ110 (Φ220)	Φ110 (Φ220)	Φ110 (Φ220)	Φ110 (Φ220)	Φ110 (Φ220)
Comprimento máximo	mm	300	300	300	300	300
Peso máximo	kg	20	20	20	20	20
>> Outros						
Potência total instalada	kVA	40	40	40	40	40
Peso	t	16	19	24	20	23
Dimensões (C x L x A)	cm	560X388X420	690X388X420	880X388X420	741X400X432	777X400X432

Configuração Padrão

1. Controller: FANUC 0i
2. Gear box drive
3. Spindle oil chiller
4. Z axis hydraulic balancing system
5. Pneumatic, hydraulic and lubrication system
6. Cutting cooling
7. internal helix chip conveyor
8. External chain type chip conveyor
9. Full enclosure
10. 3-color signal lamp, working light
11. Standard accessories
12. Common maintenance tools

Configuração Opcional

1. 24/30T ATC
2. Column heighten 200mm
3. Coolant Through spindle (2-6MPa)
4. Linear scale
5. CNC rotary table
6. Full enclosure with top cover
7. Air conditioner
8. Manual 90° milling head (4x90°)
9. Workpiece probe (2D)
10. Tool setter
11. Oil skimmer
12. Water gun
13. Oil mist collector
14. Air gun



GLUe

Itens	Unid	GLUe13 X 16	GLUe13 X 21	GLUe13 X 30	GLUe16 X 20	GLUe16 X 25
» Capacidade da Máquina						
Curso X	mm	1600	2000	3100	2000	2500
Curso Y	mm	1300	1300	1300	1500	1500
Curso Z	mm	700	700	700	700	700
Distância entre as colunas	mm	1380	1380	1380	1580	1580
Nariz do fuso p/ superfície mesa	mm	150-850	150-850	150-850	200-900	200-900
» Mesa						
Dimensões	mm	1300X1800	1300X2200	1300X3000	1500X2000	1500X2500
Carga	t	4	5	7	6	8
Ranhura	mm	22 x 160 x 8	22 X 160 X 8	22 X 160 X 8	22 X 160 X 9	22 X 160 X 9
» Avanços						
Rápido (X/Y/Z)	m/min	12/20/10	12/20/10	12/20/10	12/20/10	12/20/10
Corte (x/Y/Z)	m/min	20/24/15	16/24/15	16/24/15	16/24/15	16/24/15
» Fuso						
Tipo de acionamento		Built-in Spindle	Built-in Spindle	Built-in Spindle	Built-in Spindle	Built-in Spindle
Velocidade máxima	rpm	6000	6000	6000	6000	6000
Potência	baixa	kW	15/30	15/30	15/30	15/30
	alta	kW	22/30	22/30	22/30	22/30
Torque	baixa	N.m	318/774	318/774	318/774	318/774
	alta	N.m	233/318	233/318	233/318	233/318
Cone		BT50	BT50	BT50	BT50	BT50
Seção RAM	mm	350 x 350	350 x 350	350 x 350	350 x 350	350 x 350
» Magazine de Ferramentas						
Capacidade	T	24	24	24	24	24
Tipo		BT50	BT50	BT50	BT50	BT50
Diam máximo (Adjacente Livre)	mm	Φ110 (Φ220)	Φ110 (Φ220)	Φ110 (Φ220)	Φ110 (Φ220)	Φ110 (Φ220)
Comprimento máximo	mm	300	300	300	300	300
Peso máximo	kg	20	20	20	20	20
» Outros						
Potência total instalada	kVA	65	65	65	65	65
Peso	t	16	19	24	20	23
Dimensões (C x L x A)	cm	560 X 388 X 420	690 X 388 X 420	880 X 388 X 420	741 X 400 X 432	777 X 400 X 432

Configuração Padrão

1. Controller: MITSUBISHI M80A
2. HISION built-in spindle
3. Spindle oil chiller
4. Pneumatic, hydraulic and lubrication system
5. Simple splash guard
6. Internal helix chip conveyor

7. External chain type chip conveyor
8. Cutting cooling
9. 3-color signal lamp, working light
10. Standard accessories
11. Common maintenance

Configuração Opcional

1. Controller: FANUC 0i
2. 24/30T ATC
3. Column heighten 200mm
4. Coolant through spindle (2-6MPa)
5. Spindle ring spray
6. Linear scale
7. CNC rotary table (4th)
8. Full enclosure with top cover
9. Air conditioner
10. Manual 90° milling head
11. Workpiece probe (2D)
12. Tool setter
13. Oil skimmer
14. Water gun
15. Oil mist collector
16. Air gun
17. 8000rpm HISION built-in spindle

GLUe

Itens	Unid	GLUe18 X 30	GLUe23 X 30	GLUe23 X 40	GLUe28 X 30	GLUe28 X 40	GLUe28 X 50	GLUe28 X 60
» Capacidade da Máquina								
Curso X	mm	3200	3200	4200	3200	4200	5500	6500
Curso Y	mm	1700	2200	2200	2700	2700	2700	2700
Curso Z	mm	800	800	800	800	800	800	800
Distância entre as colunas	mm	1800	2290	2290	2790	2790	2790	2790
Nariz do fuso p/ superfície da mesa	mm	250-1050	250-1050	250-1050	250-1050	250-1050	250-1050	250-1050
» Mesa								
Dimensões	mm	1500 X 3000	2000 X 3000	2000 X 4000	2000 X 3000	2000 X 4000	2000 X 5000	2000 X 6000
Carga	t	10	15	18	15	18	22	25
Ranhura	mm	22 X 160 X 9	22 X 200 X 9	22 X 200 X 9	22 X 200 X 9	22 X 200 X 9	22 X 200 X 9	22 X 200 X 9
» Avanços								
Rápido (X/Y/Z)	m/min	10/10/10	10/10/10	10/10/10	10/10/10	10/10/10	10/10/10	10/10/10
Corte (x/Y/Z)	m/min	15/20/15	15/20/15	12/20/15	15/15/15	12/15/15	10/15/15	10/15/15
» Fuso								
Tipo de acionamento		Built-in Spindle	Built-in Spindle	Built-in Spindle	Built-in Spindle	Built-in Spindle	Built-in Spindle	Built-in Spindle
Velocidade máxima	rpm	8000	8000	8000	8000	8000	8000	8000
Potência	kW	26/45	26/45	26/45	26/45	26/45	26/45	26/45
Torque	N.m	305/623	305/623	305/623	305/623	305/623	305/623	305/623
Cone		BT50	BT50	BT50	BT50	BT50	BT50	BT50
Seção RAM	mm	380 x 380	380 x 380	380 x 380	380 x 380	380 x 380	380 x 380	380 x 380
» Magazine de Ferramenta								
Capacidade	T	24	24	24	24	24	24	24
Tipo		BT50	BT50	BT50	BT50	BT50	BT50	BT50
Diam máximo (Adjacente Livre)	mm	Φ110 (Φ190)	Φ110 (Φ160)	Φ110 (Φ160)	Φ110 (Φ220)	Φ110 (Φ220)	Φ110 (Φ220)	Φ110 (Φ220)
Comprimento máximo	mm	300	300	300	300	300	300	300
Peso máximo	kg	20	20	20	20	20	20	20
» Outros								
Potência total Instalada	kVA	60	60	60	60	60	60	60
Peso	t	30	35	40	38	43	47	52
Dimensões (C x L x A)	cm	975X470X530	1050X475X530	1250X475X530	1050X530X530	1250X530X530	1500X530X530	1700X530X530

Configuração Padrão

1. Controller: FANUC 0i
2. HISION built-in spindle
3. Spindle oil chiller
4. Pneumatic, hydraulic and lubrication system
5. Simple splash guard
6. Internal helix chip conveyor
7. External chain type chip conveyor
8. Cutting cooling
9. 3-color signal lamp, working light
10. Standard accessories
11. Common maintenance

Configuração Opcional

1. Controller: FANUC 31i
2. Controller: SIEMENS 828D (only for Purchased built-in spindle)
3. Germany kessler (HSK-A63) 20000rpm/24000rpm built-in spindle
4. HISION (BT40) 12000rpm built-in spindle
5. 24T armless ATC
6. Column heighten
7. Coolant through spindle (2-6MPa)
8. Linear scale
9. CNC rotary table (4th)
10. Full enclosure
10. Full enclosure
11. Auto milling head
12. 2 stations auto heads storing shelf (only for 8000rpm built-in spindle)
13. Workpiece probe
14. Tool setter
15. Oil skimmer
16. Air gun
17. Water gun
18. Air conditioner
19. Z axis travel 1000mm



GLU

Itens	Unid	GLU18 X 30	GLU23 x 30	GLU23 X 40
>> Capacidade da Máquina				
Curso X	mm	3200	3200	4200
Curso Y	mm	1700	2200	2200
Curso Z	mm	1000	1000	1000
Distância entre as colunas	mm	1800	2290	2290
Nariz do fuso p/ superfície mesa	mm	250-1250	250-1250	250-1250
>> Mesa				
Dimensões	mm	1500 x 3000	2000 x 3000	2000 x 4000
Carga	t	10	15	18
Ranhura	mm	22 x 160 x 9	22 X 200 X 9	22 X 200 X 9
>> Avanços				
Rápido (X/Y/Z)	m/min	10/10/10	10/10/10	10/10/10
Corte (x/Y/Z)	m/min	15/20/15	15/20/15	12/20/15
>> Fuso				
Velocidade máxima	rpm	6000	6000	6000
Potência	kW	15/18.5	22/26	22/26
Torque	N.m	490/605	726/858	726/858
Cone		BT50	BT50	BT50
Seção RAM	mm	350 x 350 (380 X 380 OPTION)	350 x 350 (380 X 380 OPTION)	350 x 350 (380 X 380 OPTION)
>> Magazine de Ferramentas				
Capacidade	T	24	24	24
Tipo		BT50	BT50	BT50
Diam máximo (Adjacente Livre)	mm	Φ110 (Φ220)	Φ110 (Φ220)	Φ110 (Φ220)
Comprimento máximo	mm	300	300	300
Peso máximo	kg	20	20	20
>> Outros				
Potência total Instalada	kVA	40	55	55
Peso	t	30	35	40
Dimensões (C x L x A)	cm	975 X 470 X 510	1050 x 475 x 510	1250 x 475 x 510

GLU

Itens	Unid	GLU28 X 30	GLU28 X 40	GLU28 X 50	GLU28 X 60
>> Capacidade da Máquina					
Curso X	mm	3200	4200	5500	6500
Curso Y	mm	2700	2700	2700	2700
Curso Z	mm	1000	1000	1000	1000
Distância entre as colunas	mm	2790	2790	2790	2790
Nariz do fuso p/ superfície mesa	mm	250-1250	250-1250	250-1250	250-1250
>> Mesa					
Dimensões	mm	2000 X 3000	2000 X 4000	2000 X 5000	2000 X 6000
Carga	t	15	18	22	25
Ranhura	mm	22 X 200 X 9	22 X 200 X 9	22 X 200 X 9	22 X 200 X 9
>> Avanços					
Rápido (X/Y/Z)	m/min	10/10/10	10/10/10	10/10/10	10/10/10
Corte (X/Y/Z)	m/min	12/20/15	12/20/15	10/20/15	10/20/15
>> Fuso					
Velocidade máxima	rpm	6000	6000	6000	6000
Potência	kW	22/26	22/26	22/26	22/26
Torque	N.m	726/858	726/858	726/858	726/858
Cone		BT50	BT50	BT50	BT50
Seção RAM	mm	350 X 350 (380 X 380 OPTION)	350 X 350 (380 X 380 OPTION)	350 X 350 (380 X 380 OPTION)	350 X 350 (380 X 380 OPTION)
>> Magazine de Ferramentas					
Capacidade	T	24	24	24	24
Tipo		BT50	BT50	BT50	BT50
Diam máximo (Adjacente Livre)	mm	Φ110 (Φ190)	Φ110 (Φ160)	Φ110 (Φ160)	Φ110 (Φ220)
Comprimento máximo	mm	300	300	300	300
Peso máximo	kg	20	20	20	20
>> Outros					
Potência total instalada	kVA	55	55	55	55
Peso	t	38	43	47	52
Dimensões (C x L x A)	cm	1050 X 530 X 510	1250 X 530 X 510	1500 X 530 X 510	1700 X 530 X 510

Configuração Padrão

1. Controller: FANUC 0i
2. Gear box drive
3. Long nose spindle
4. Z axis hydraulic balancing system
5. Spindler oil chiller
6. Pneumatic, hydraulic and lubrication system
7. Simple splash guard
8. Internal helix chip conveyor
9. External chain type chip conveyor
10. Cutting cooling
11. 3-color signal lamp, working light
12. Standard accessories
13. Common maintenance tools

Configuração Opcional

1. Controller: FANUC 31i
2. Controller: SIEMENS 828D/840Dsi
3. 24/40T ATC
4. 40T vertical & horizontal ATC
5. Column heighten
6. Crossrail (Y axis) extended
7. 380 Square RAM (Z axis travel 1000mm)
8. Coolant through spindle (2-6MPa)
9. Linear scale
10. CNC rotary table
11. Full enclosure
12. Auto milling heads
13. Manual milling heads
14. 2 stations auto heads storing shelf
15. Workpiece probe
16. Tool setter
17. Oil skimmer
18. Air gun
19. Water gun
20. Air conditioner

Configuração Padrão

1. Controller: FANUC 0i
2. Gear box drive
3. Long nose spindle
4. Z axis hydraulic balancing system
5. Spindler oil chiller
6. Pneumatic, hydraulic and lubrication system
7. Simple splash guard
8. Internal helix chip conveyor
9. External chain type chip conveyor
10. Cutting cooling
11. 3-color signal lamp, working light
12. Standard accessories
13. Common maintenance tools

Configuração Opcional

1. Controller: FANUC 31i
2. Controller: SIEMENS 828D/840Dsi
3. 24/40T ATC
4. 40T vertical & horizontal ATC
5. Column heighten
6. Crossrail (Y axis) extended
7. 380 Square RAM (Z axis travel 1000mm)
8. Coolant through spindle (2-6MPa)
9. Linear scale
10. CNC rotary table
11. Full enclosure
12. Auto milling heads
13. Manual milling heads
14. 2 stations auto heads storing shelf
15. Workpiece probe
16. Tool setter
17. Oil skimmer
18. Air gun
19. Water gun
20. Air conditioner



GRU II

Itens	Unid	GRU28 II X 30	GRU28 II X 40	GRU28 II X 50	GRU28 II X 60
>> Capacidade da Máquina					
Curso X	mm	3200	4200	5500	6500
Curso Y	mm	2700	2700	2700	2700
Curso Z	mm	1000 (1250 OPTION)	1000 (1250 OPTION)	1000 (1250 OPTION)	1000 (1250 OPTION)
Distância entre as colunas	mm	2800	2800	2800	2800
Nariz do fuso p/ superfície mesa	mm	150-1150	150-1150	150-1150	150-1150
>> Mesa					
Dimensões	mm	2000 X 3000	2000 x 4000	2000 x 5000	2000 x 6000
Carga	t	15	18	22	25
Ranhura	mm	22 x 200 x 9	22 X 200 X 9	22 X 200 X 9	22 X 200 X 9
>> Avanços					
Rápido (X/Y/Z)	m/min	6/6/6	6/6/6	6/6/6	6/6/6
Corte (x/Y/Z)	m/min	15/15/10	12/15/10	10/15/10	10/15/10
>> Fuso					
Velocidade máxima	rpm	4000	4000	4000	4000
Potência	kW	22/26	22/26	22/26	22/26
Torque	N.m	866/1023	866/1023	866/1023	866/1023
Cone		BT50	BT50	BT50	BT50
Seção RAM	mm	400 X 400	400 X 400	400 X 400	400 X 400
>> Magazine de Ferramentas					
Capacidade	T	24/40	24/40	24/40	24/40
Tipo		BT50	BT50	BT50	BT50
Diam máximo (Adjacente Livre)	mm	Φ110 (Φ220)	Φ110 (Φ220)	Φ110 (Φ220)	Φ110 (Φ220)
Comprimento máximo	mm	300	300	300	300
Peso máximo	kg	20	20	20	20
>> Outros					
Potência total instalada	kVA	55	55	55	55
Peso	t	42	48	53	59
Dimensões (C x L x A)	cm	1050 X 530 X 550	1250 X 530 X 550	1500 X 530 X 550	1700 X 530 X 550

Configuração Padrão

1. Controller: FANUC 0i
2. Gear box drive
3. Z axis hydraulic balancing system
4. Spindler oil chiller
5. Pneumatic, hydraulic and lubrication system
6. Simple splash guard
7. Internal helix chip conveyor
8. Cutting cooling
9. External chain type chip conveyor
10. 3-color signal lamp, working light
11. Standard accessories
12. Common maintenance tools

Configuração Opcional

1. Controller: FANUC 31i
2. Controller: SIEMENS 828D/840Dsi
3. 24/40T ATC
4. 40T vertical & horizontal ATC
5. Column heighten
6. Crossrail (Y axis) extended
7. Z axis travel 1250mm (ram420x430&column heighten 200mm)
8. Coolant through spindle (2-6MPa)
9. Linear scale
10. CNC rotary table (4th)
11. Full enclosure
12. Auto milling heads
13. Manual milling heads
14. 2 stations auto heads storing shelf
15. Manual cart head stock
16. Workpiece probe
17. Tool setter
18. Oil skimmer
19. Water gun
20. Air gun
21. Air conditioner

GRU II

Itens	Unid	GRU32 II X 40	GRU32 II X 50	GRU32 II X 60	GRU32 II X 80
>> Capacidade da Máquina					
Curso X	mm	4200	5500	6500	8500
Curso Y	mm	3200	3200	3200	3200
Curso Z	mm	1000 (1250 OPTION)	1000 (1250 OPTION)	1000 (1250 OPTION)	1000 (1250 OPTION)
Distância entre as colunas	mm	3200	3200	3200	3200
Nariz do fuso p/ superfície mesa	mm	250-1250	250-1250	250-1250	250-1250
>> Mesa					
Dimensões	mm	2500 X 4000	2500 X 5000	2500 X 6000	2500 X 8000
Carga	t	20	25	28	35
Ranhura	mm	28 X 200 X 12	28 X 200 X 12	28 X 200 X 12	28 X 200 X 12
>> Avanços					
Rápido (X/Y/Z)	m/min	6/6/6/	6/6/6	6/6/6	6/6/6
Corte (x/Y/Z)	m/min	12/15/10	10/15/10	10/15/10	10/15/10
>> Fuso					
Velocidade máxima	rpm	4000	4000	4000	4000
Potência	kW	22/26	22/26	22/26	22/26
Torque	N.m	866/1023	866/1023	866/1023	866/1023
Cone		BT50	BT50	BT50	BT50
Seção RAM	mm	400 X 400	400 X 400	400 X 400	400 X 400
>> Magazine de Ferramentas					
Capacidade	T	24/40	24/40	24/40	24/40
Tipo		BT50	BT50	BT50	BT50
Diam máximo (Adjacente Livre)	mm	Φ110 (Φ220)	Φ110 (Φ220)	Φ110 (Φ220)	Φ110 (Φ220)
Comprimento máximo	mm	300	300	300	300
Peso máximo	kg	20	20	20	20
>> Outros					
Potência total instalada	kVA	55	55	55	55
Peso	t	57	64	71	52
Dimensões (C x L x A)	cm	1250 X 580 X 570	1500 X 580 X 570	1700 X 580 X 570	2300 X 580 X 570

Configuração Padrão

1. Controller: FANUC 0i
2. Gear box drive
3. Z axis hydraulic balancing system
4. Spindler oil chiller
5. Pneumatic, hydraulic and lubrication system
6. Simple splash guard
7. Internal helix chip conveyor
8. Cutting cooling
9. External chain type chip conveyor
10. 3-color signal lamp, working light
11. Standard accessories
12. Common maintenance tools

Configuração Opcional

1. Controller: FANUC 31i
2. Controller: SIEMENS 828D/840Dsi
3. 24/40T ATC
4. 40T vertical & horizontal ATC
5. Column heighten
6. Crossrail (Y axis) extended
7. Z axis travel 1250mm (ram420x430&column heighten 200mm)
8. Coolant through spindle (2-6MPa)
9. Linear scale
10. CNC rotary table (4th)
11. Full enclosure
12. Auto milling heads
13. Manual milling heads
14. 2 stations auto heads storing shelf
15. Manual cart head stock
16. Workpiece probe
17. Tool setter
18. Oil skimmer
19. Water gun
20. Air gun
21. Air conditioner



GNU

Ítems	Unid	GNU28 X 30	GNU28 X40	GNU28 X 50	GNU28 X 60	GNU32 X 40
» Capacidade da Máquina						
Curso X	mm	3200	4200	5500	6500	4200
Curso Y	mm	2800	2800	2800	2800	3200
Curso Z	mm	1250 (1500 OPTION)	1250 (1500 OPTION)	1250 (1500 OPTION)	1250 (1500 OPTION)	1250 (1500 OPTION)
Distância entre as colunas	mm	2800	2800	2800	2800	3200
Nariz do fuso p/ superfície mesa	mm	150-1400	150-1400	150-1400	150-1400	250-1500
» Mesa						
Dimensões	mm	2000 X 3000	2000 x 4000	2000 x 5000	2000 x 6000	2500 X 4000
Carga	t	15	18	22	25	20
Ranhura	mm	22 x 200 x 9	22 X 200 X 9	22 X 200 X 9	22 X 200 X 9	28 X 200 X 12
» Avanços						
Rápido (X/Y/Z)	m/min	6/6/6	6/6/6	6/6/6	6/6/6	6/6/6/
Corte (x/Y/Z)	m/min	15/15/10	12/15/10	10/15/10	10/15/10	12/15/10
» Fuso						
Velocidade máxima	rpm	3500	3500	3500	3500	3500
Potência	kW	30/37	30/37	30/37	30/37	30/37
Torque	N.m	1860/2300	1860/2300	1860/2300	1860/2300	1860/2300
Cone		BT50	BT50	BT50	BT50	BT50
Seção RAM	mm	450 X 450	450 X 450	450 X 450	450 X 450	450 X 450
» Magazine de Ferramenta						
Capacidade	T	24/40	24/40	24/40	24/40	24/40
Tipo		BT50	BT50	BT50	BT50	BT50
Diam máximo (Adjacente Livre)	mm	Φ110 (Φ220)	Φ110 (Φ220)	Φ110 (Φ220)	Φ110 (Φ220)	Φ110 (Φ220)
Comprimento máximo	mm	400	400	400	400	400
Peso máximo	kg	25	25	25	25	25
» Outros						
Potência total instalada	kVA	65	65	65	65	65
Peso	t	49	54	63	70	64
Dimensões (C x L x A)	cm	1050 X 530 X 675	1250 X 530 X 675	1500 X 530 X 675	1700 X 530 X 675	1250 X 570 X 695

Configuração Padrão

1. Controller: FANUC 0i
2. Gear box drive
3. Z axis hydraulic balancing system
4. Spindler oil chiller
5. Pneumatic, hydraulic and lubrication system
6. Simple splash guard
7. Internal helix chip conveyor
8. Cutting cooling
9. External chain type chip conveyor
10. 3-color signal lamp, working light
11. Standard accessories
12. Common maintenance tools

Configuração Opcional

1. Controller: FANUC 31i
2. Controller: SIEMENS 828D/840Dsi
3. 24/40T ATC
4. 40T vertical & horizontal ATC
5. Column heighten
6. Crossrail (Y axis) extended
7. Z axis travel 1250mm (ram420x430&column heighten 200mm)
8. Coolant through spindle (2-6MPa)
9. Linear scale
10. CNC rotary table (4th)
11. Full enclosure
12. Auto milling heads
13. Manual milling heads
14. 2 stations auto heads storing shelf
15. Manual cart head stock
16. Workpiece probe
17. Tool setter
18. Oil skimmer
19. Water gun
20. Air gun
21. Air conditioner

GNU

Ítems	Unid	GNU32 X 50	GNU32 X 60	GNU32 X 80	GNU36 X 50	GNU36 X 60	GNU36 X 80
» Capacidade da Máquina							
Curso X	mm	5500	6500	8500	5500	6500	8500
Curso Y	mm	3200	3200	3200	3600	3600	3600
Curso Z	mm	1250 (1500 OPTION)	1250 (1500 OPTION)	1250 (1500 OPTION)	1250 (1500 OPTION)	1250 (1500 OPTION)	1250 (1500 OPTION)
Distância entre as colunas	mm	3200	3200	3200	3600	3600	3600
Nariz do fuso p/ superfície mesa	mm	250-1500	250-1500	250-1500	200-1450	200-1450	200-1450
» Mesa							
Dimensões	mm	2500 X 5000	2500 X 6000	2500 X 8000	3000 X 5000	3000 X 6000	3000 X 8000
Carga	t	25	28	35	28	35	40
Ranhura	mm	28 X 200 X 12	28 X 200 X 12	28 X 200 X 12	36 x 200 x 14	36 x 200 x 14	36 x 200 x 14
» Avanços							
Rápido (X/Y/Z)	m/min	6/6/6	6/6/6	6/6/6	6/6/6/	6/6/6	6/6/6
Corte (x/Y/Z)	m/min	10/15/10	10/15/10	10/15/10	10/15/10	10/15/10	10/15/10
» Fuso							
Velocidade máxima	rpm	3500	3500	3500	3500	3500	3500
Potência	kW	30/37	30/37	30/37	30/37	30/37	30/37
Torque	N.m	1860/2300	1860/2300	1860/2300	1860/2300	1860/2300	1860/2300
Cone		BT50	BT50	BT50	BT50	BT50	BT50
Seção RAM	mm	450 X 450	450 X 450	450 X 450	450 X 450	450 X 450	450 X 450
» Magazine de Ferramentas							
Capacidade	T	24/40	24/40	24/40	24/40	24/40	24/40
Tipo		BT50	BT50	BT50	BT50	BT50	BT50
Diam máximo (Adjacente Livre)	mm	Φ110 (Φ220)	Φ110 (Φ220)	Φ110 (Φ220)	Φ110 (Φ220)	Φ110 (Φ220)	Φ110 (Φ220)
Comprimento máximo	mm	400	400	400	400	400	400
Peso máximo	kg	25	25	25	25	25	25
» Outros							
Potência total instalada	kVA	65	65	65	80	80	80
Peso	t	72	80	99	79	87	106
Dimensões (C x L x A)	cm	1500 X 570 X 695	1700 X 570 X 695	2300 X 570 X 695	1500 X 620 X 695	1700 X 620 X 695	2300 X 620 X 695

Configuração Padrão

1. Controller: FANUC 0i
2. Gear box drive
3. Z axis hydraulic balancing system
4. Spindler oil chiller
5. Pneumatic, hydraulic and lubrication system
6. Simple splash guard
7. Internal helix chip conveyor
8. Cutting cooling
9. External chain type chip conveyor
10. 3-color signal lamp, working light
11. Standard accessories
12. Common maintenance tools

Configuração Opcional

1. Controller: FANUC 31i
2. Controller: SIEMENS 828D/840Dsi
3. 24/40T ATC
4. 40T vertical & horizontal ATC
5. Column heighten
6. Crossrail (Y axis) extended
7. Z axis travel 1250mm (ram420x430&column heighten 200mm)
8. Coolant through spindle (2-6MPa)
9. Linear scale
10. CNC rotary table (4th)
11. Full enclosure
12. Auto milling heads
13. Manual milling heads
14. 2 stations auto heads storing shelf
15. Manual cart head stock
16. Workpiece probe
17. Tool setter
18. Oil skimmer
19. Water gun
20. Air gun
21. Air conditioner



MORE THAN PRECISION

Ningbo Haitian Precision Machinery Co., Ltd. is a listed company specializing in machine tooling industry. It has developed Ningbo Dagang production base, Ningbo Yanshan production base and Dalian production base. It has a modern constant temperature processing and assembly plant of over 300,000 square meters with nearly 1500 employees. It is awarded honors such as “national major technical equipment enterprise”, “national high-tech enterprise”, and “provincial high-tech research and development center”.

