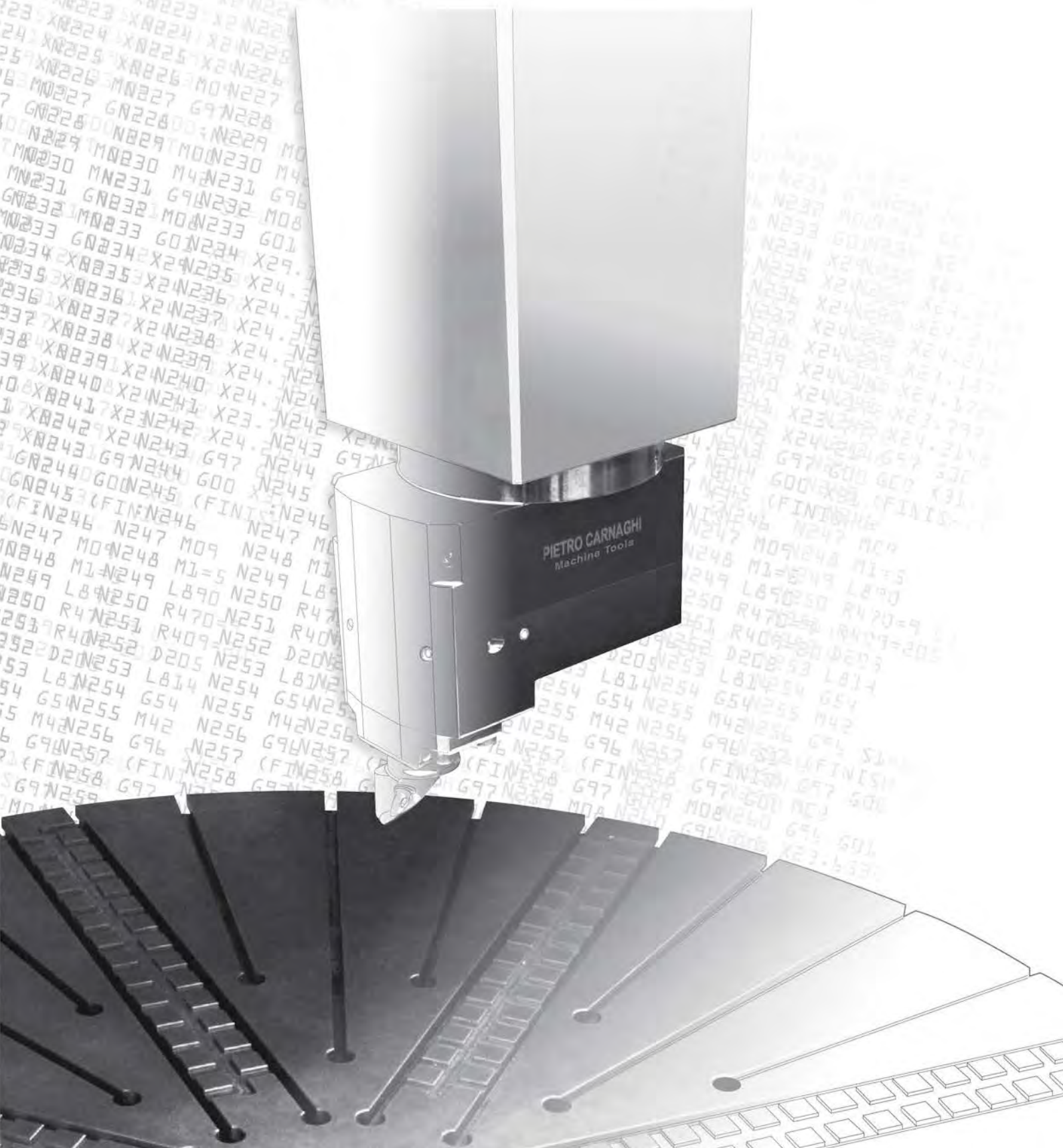


# PIETRO CARNAGHI

## Vertical Lathes







Founded in 1922

**PIETRO CARNAGHI** is an old established company with young ideas and a dynamic approach in the field of vertical turning centres, FMS installations, and GANTRY milling machines, that has enabled it to achieve success and recognition with the most important international companies.

This publication is just an example of our achievements and quality.

Pietro Carnaghi invites you to come and visit our plant to examine your production requirements.

**PIETRO CARNAGHI** è una azienda di antica fondazione, giovane nelle tecnologie e nelle idee che opera oggi nel settore dei torni verticali, delle fresatrici a portale mobile (tipo Gantry) e delle celle flessibili di produzione (FMS), con notevole dinamismo, premiata da lusinghieri successi internazionali. Significative installazioni sono collocate nelle più prestigiose aziende in tutto il mondo.

*Questa pubblicazione è solo un esempio delle nostre realizzazioni e della nostra qualità.*

*Pietro Carnaghi Vi invita a visitare la nostra sede, ad esaminare assieme e risolvere le Vostre esigenze produttive.*

Marisa Carnaghi  
President

A handwritten signature in black ink, appearing to read 'Marisa Carnaghi', written in a cursive style.







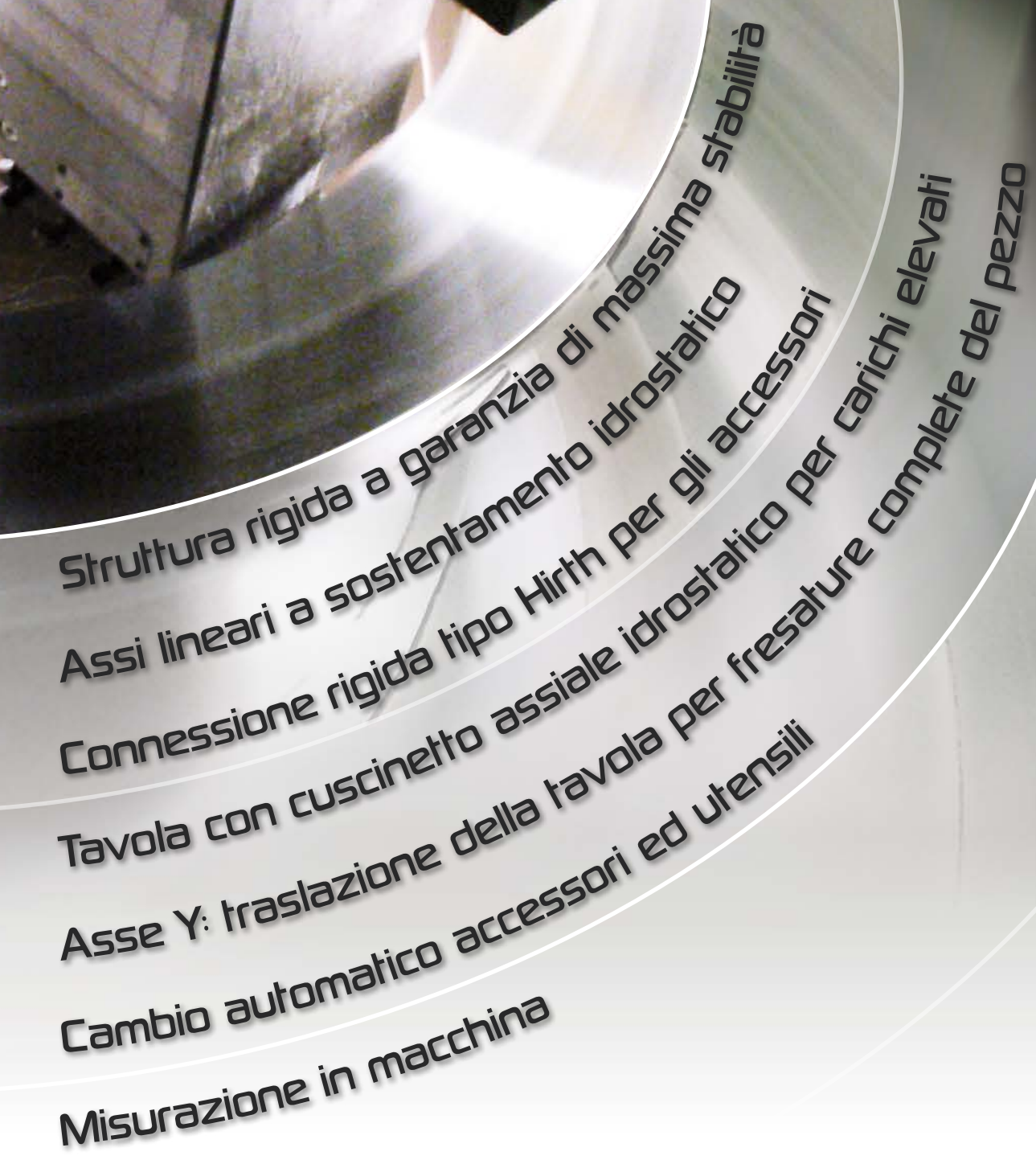






Rigid massive structures  
Hydrostatic guideways on all axes  
Strong Hirth coupling for accessories  
Hydrostatic axial bearing for heavy loads  
Y axis: table translation for complete workpiece milling  
Full automatic change of tools and accessories  
In process measuring probes





Struttura rigida a garanzia di massima stabilità  
Assi lineari a sostentamento idrostatico  
Connessione rigida tipo Hirth per gli accessori  
Tavola con cuscinetto assiale idrostatico per carichi elevati  
Asse Y: traslazione della tavola per fresature complete del pezzo  
Cambio automatico accessori ed utensili  
Misurazione in macchina

# Vertical Lathes series

---



SERIES **ATT** Double table

---

Doppia tavola



SERIES **ATF** Compact design

---

Struttura compatta



SERIES **AC** Single frame design

---

Struttura monomontante



SERIES **AC** Double column design

---

Struttura bimonstante



SERIES **AP** Heavy machine structure

---

Struttura di grandi dimensioni



SERIES **AY** Integrated movable table (Y axis)

---

Tavola traslante integrata (asse Y)



SERIES **AS** Single column design

---

Struttura a colonna singola

---



SERIES **ATT**



ATT 12



ATT 24

DOUBLE TABLE





SERIES **ATF**



**ATF 14 TM P**



**ATF 14 TM P**





AC 16 TM P



AC 16 TM P





AC 16 TM



AC 16 TM

SINGLE FRAME DESIGN





AC 20 TM



AC 20 TM



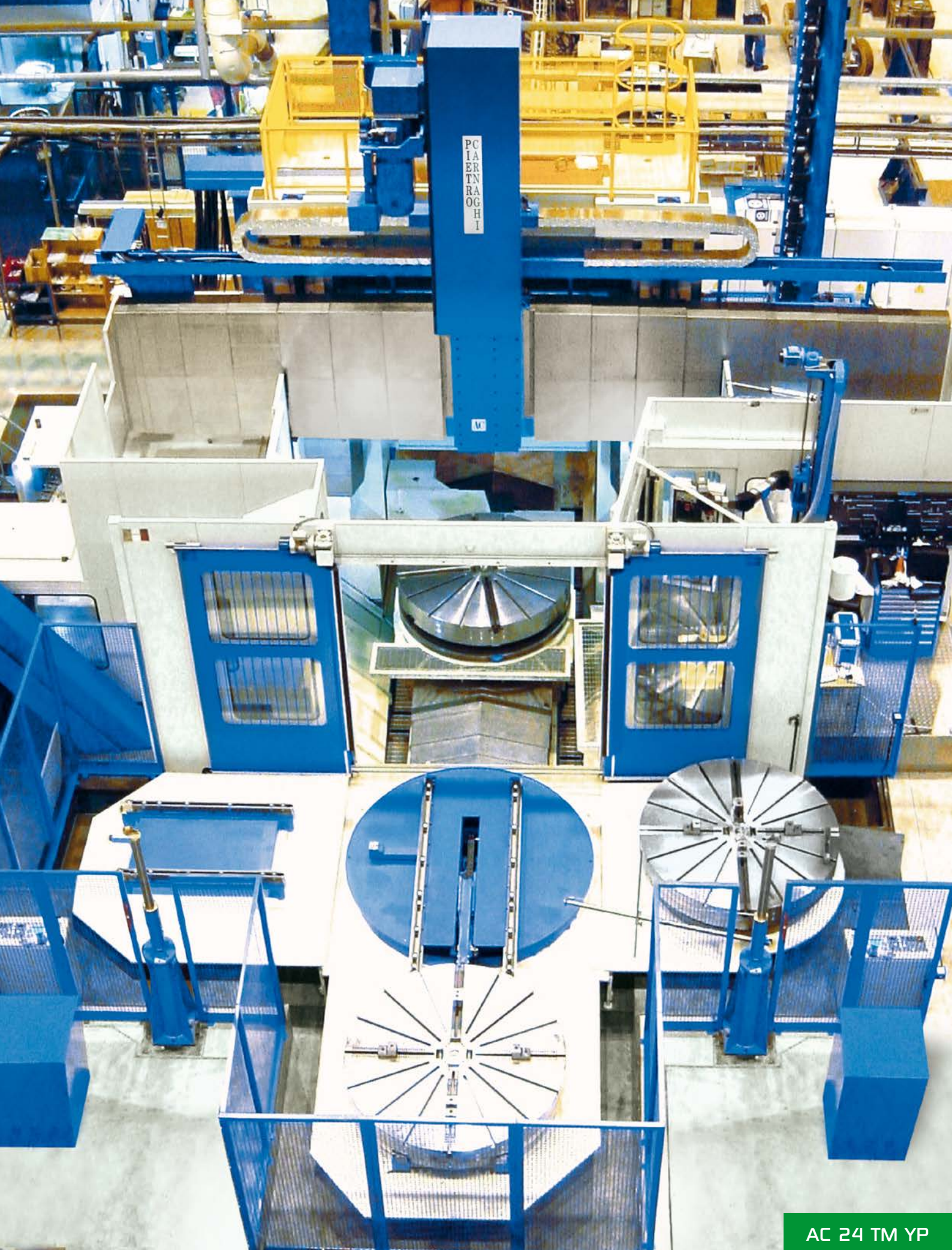


AC 20 TM P



AC 24 TM Y





PCIAERTNRAOGHI

AC 24 TM YP

SINGLE FRAME DESIGN





AC 28 T TM



AC 28 T





AC 32 TM



AC 32 TM P





AC 32 TT YY



AC 32 TT YY





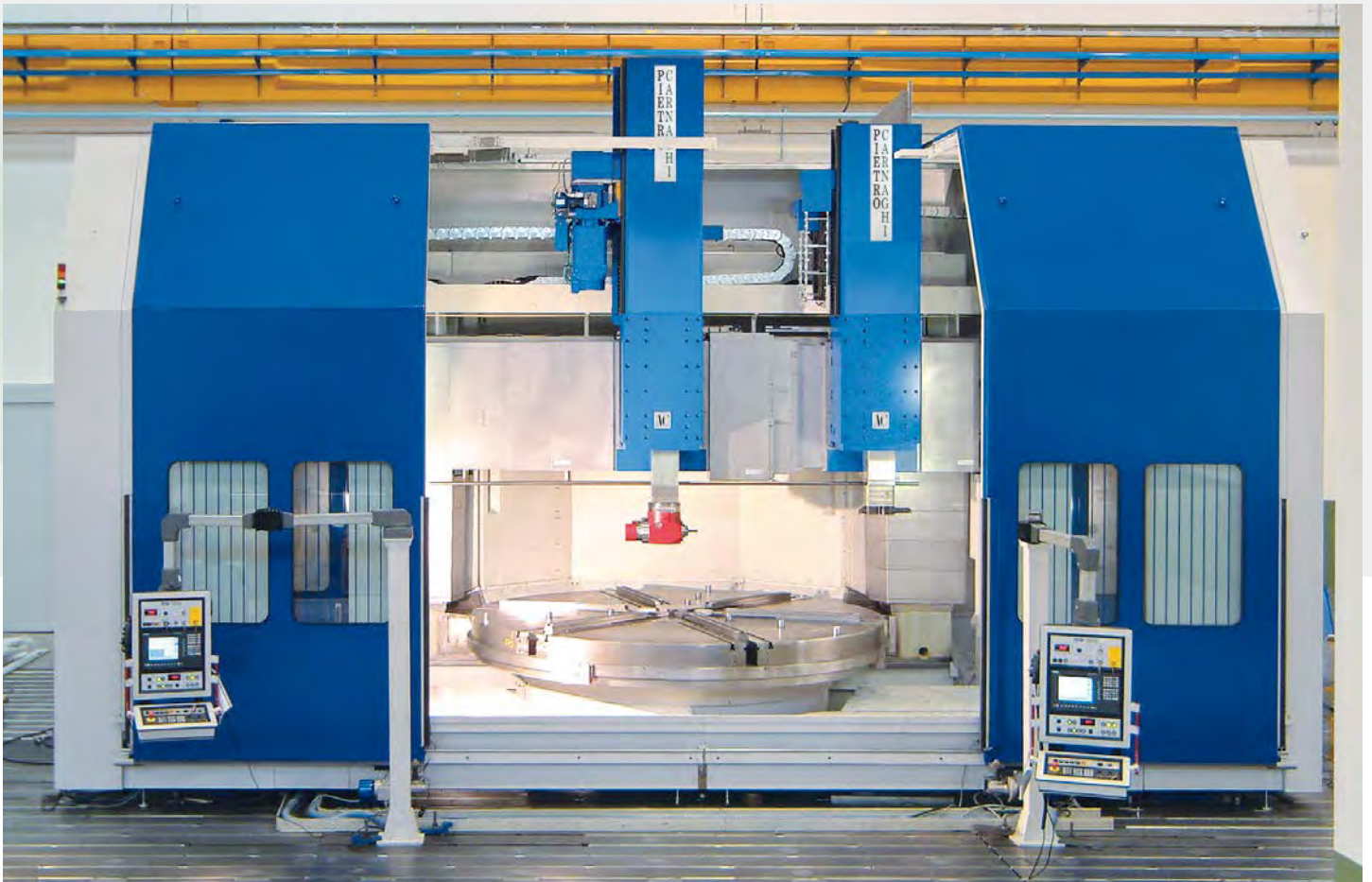
AC 36 TM P Y



AC 36 TM

DOUBLE COLUMN DESIGN





AC 42 T TM



AC 46 TM

DOUBLE COLUMN DESIGN





AC 52 TM



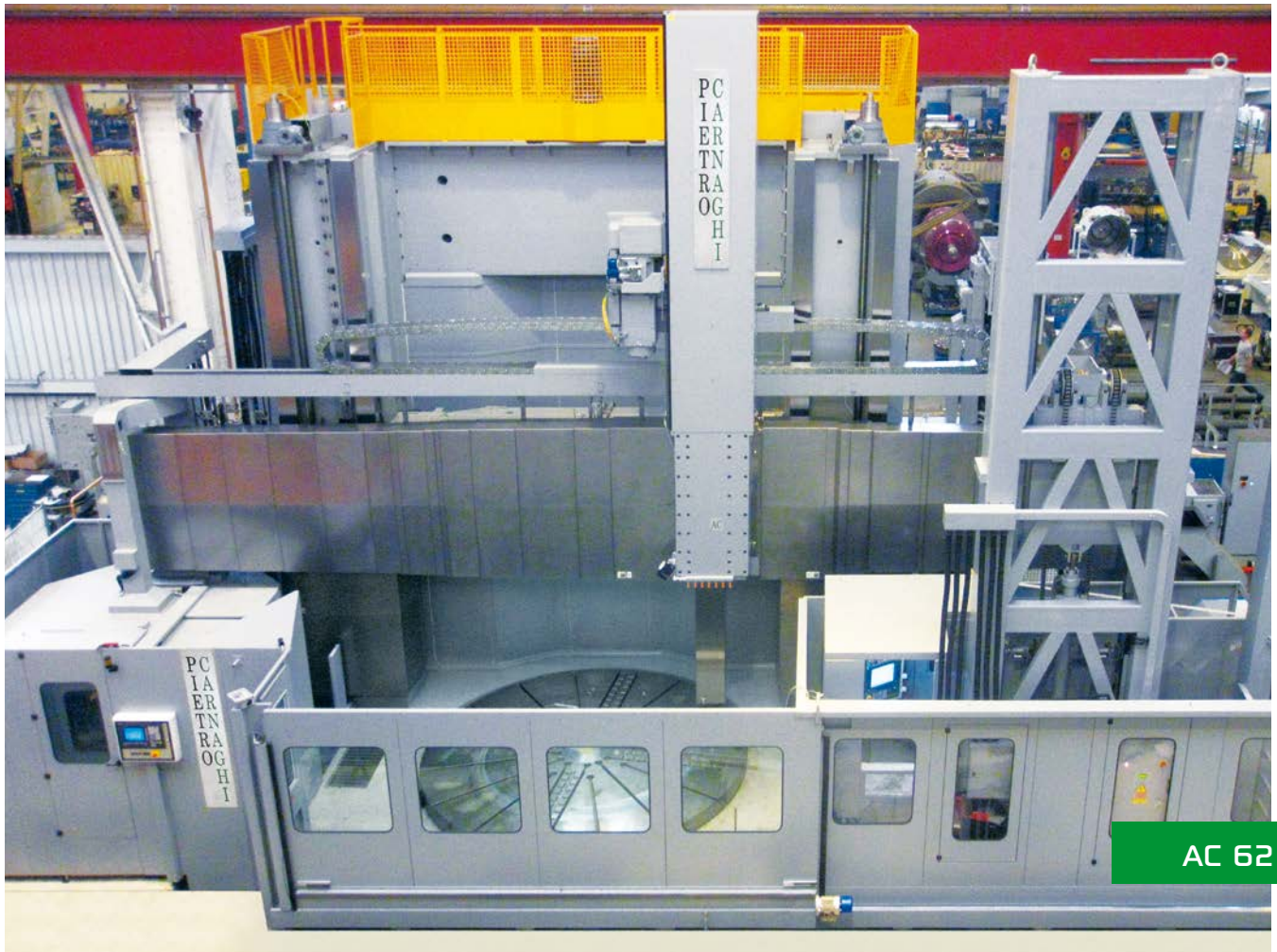
AC 62 TM

DOUBLE COLUMN DESIGN





AC 62 TM Y



AC 62 TM





AP 80 TM



AP 80 TM





AP 100 TM T



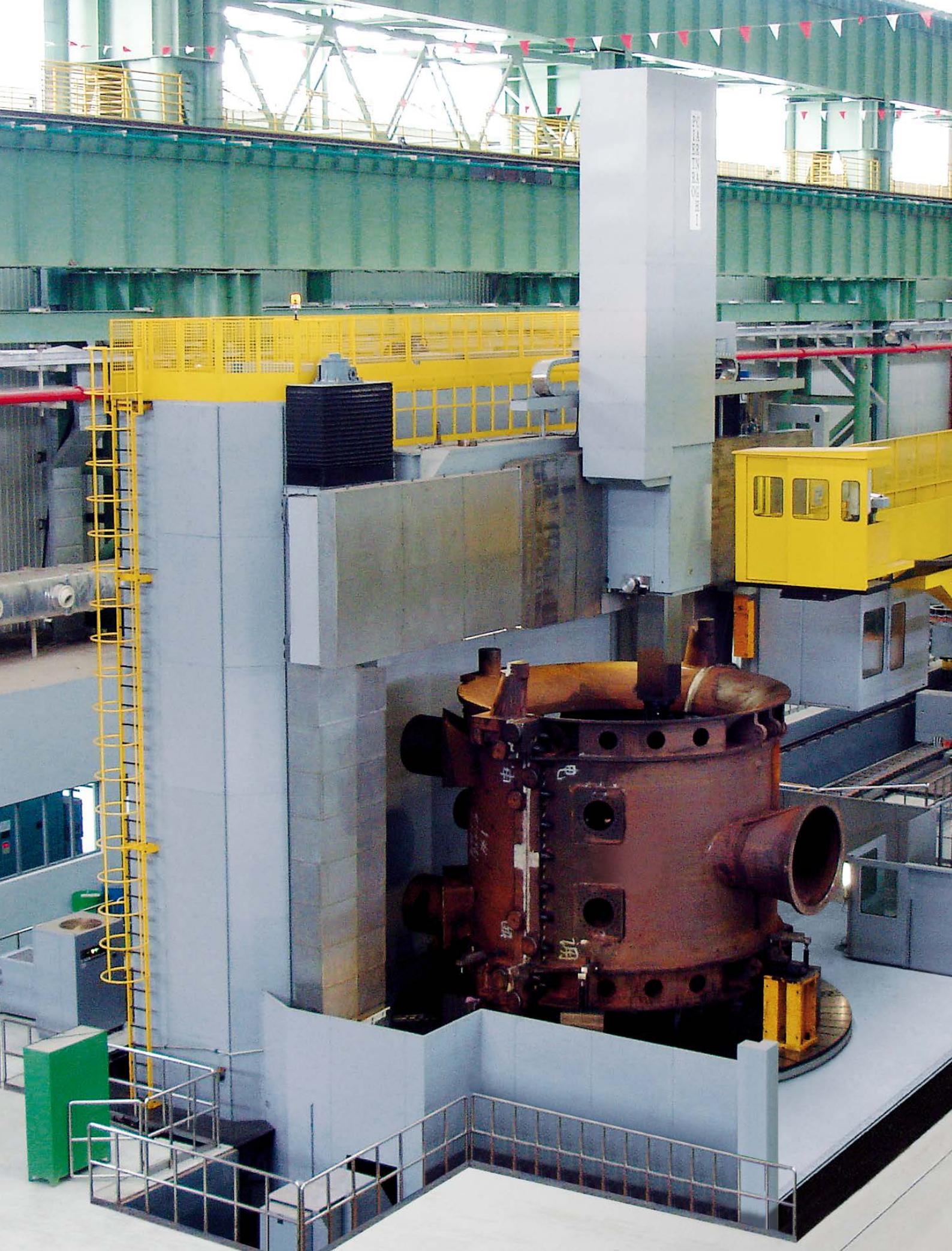


AP 100 TM T



AP 100 TM



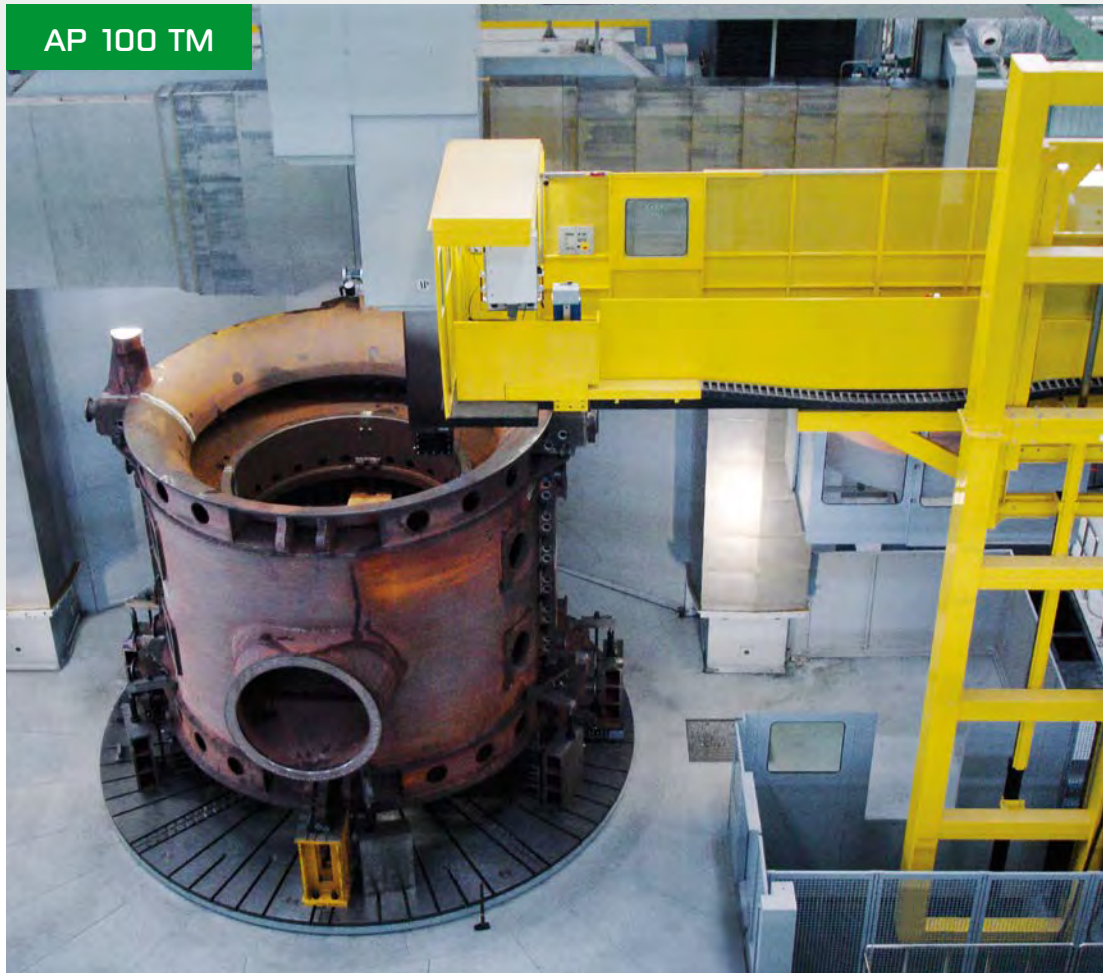


HEAVY MACHINE STRUCTURE





AP 100 TM



AP 100 TM



AP 100 TM TM



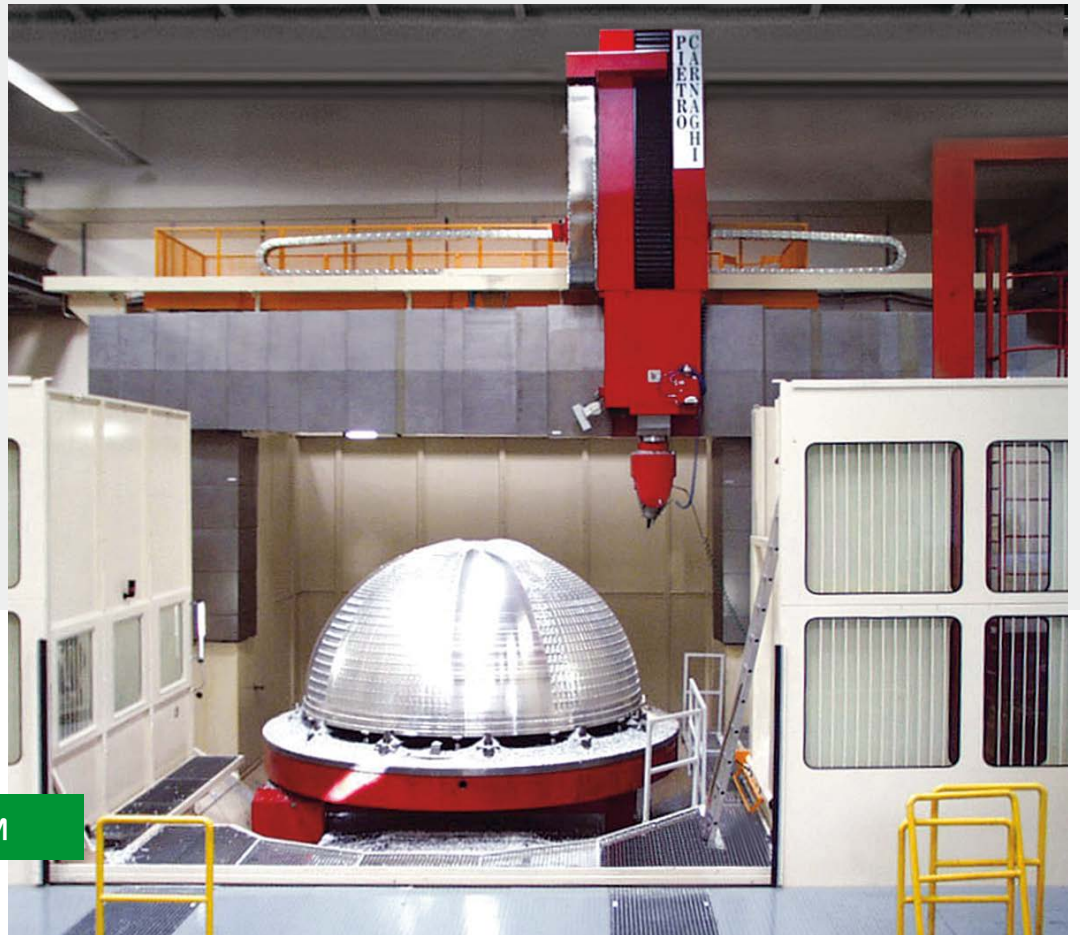


AP 120 TM



AP 120 TM





**AY 62 TM**



**AY 70 TM YY**



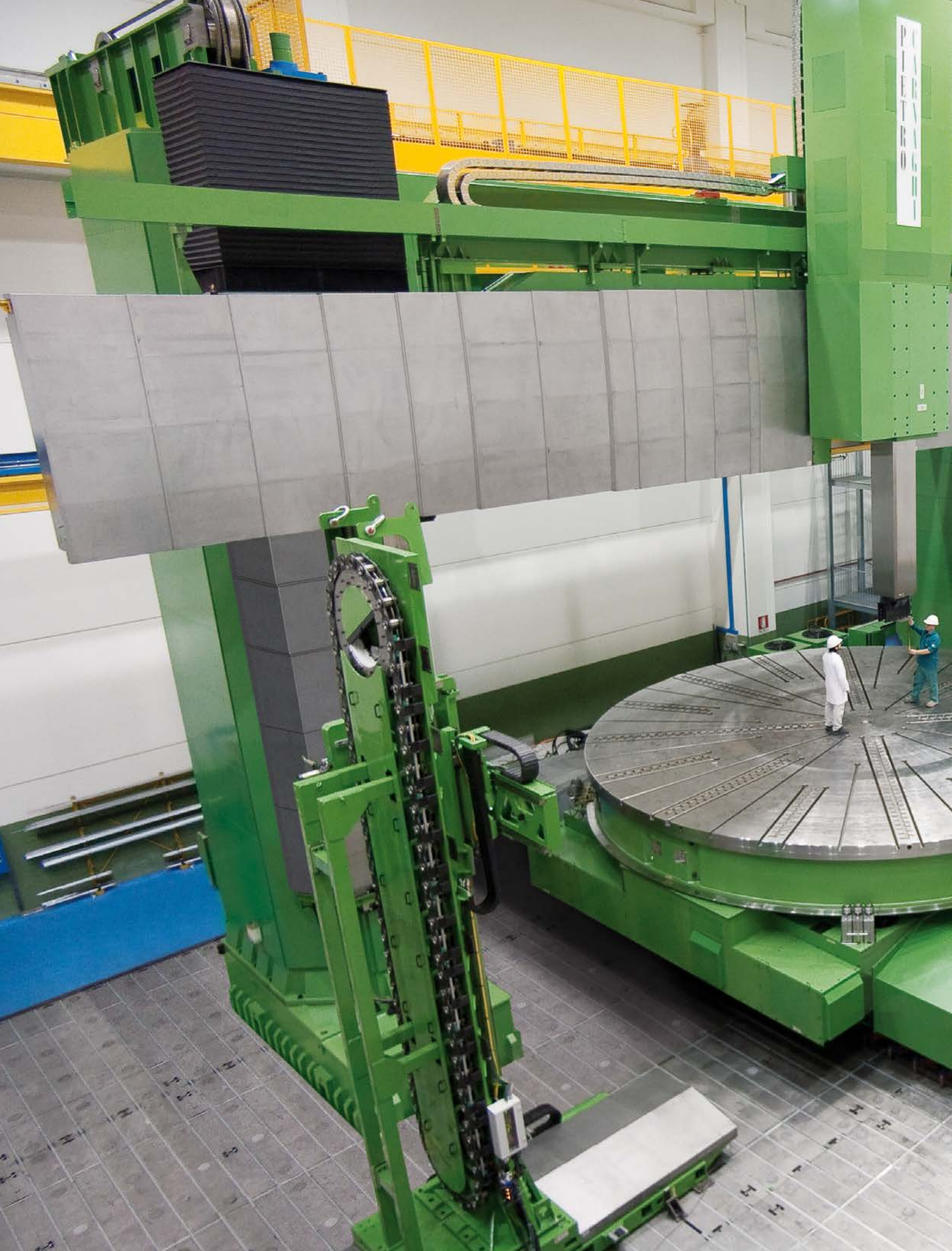


INTEGRATED MOVABLE TABLE (Y AXIS)









INTEGRATED MOVABLE TABLE (Y AXIS)





AY 140 TM







AS 65 TM



AS 160 TM



SINGLE COLUMN DESIGN



# FMS



FLEXIBLE MANUFACTURING SYSTEMS





Machine models: no ° 3 AC 16 TM





Machine models: no ° 2 AC 24 TM Y

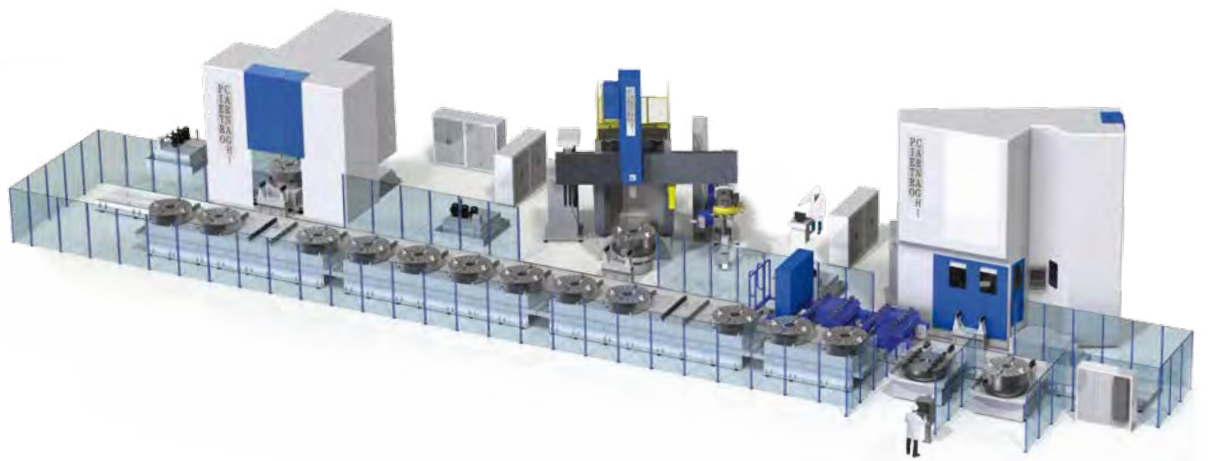
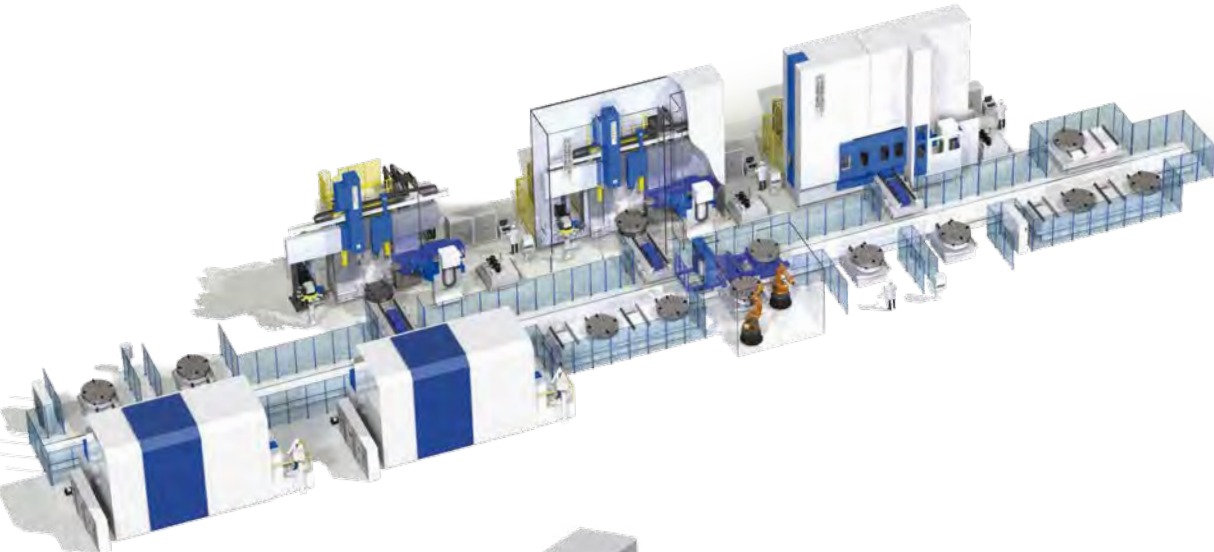


Machine models: no ° 3 AC 16 TM





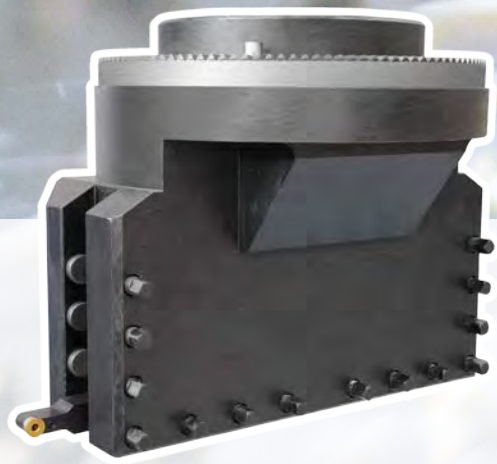
Machine models: no ° 2 AC 20





# TURNING ACCESSORIES

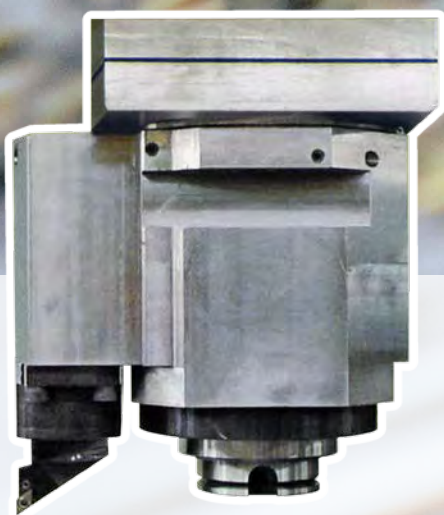
## ACCESSORI DI TORNITURA



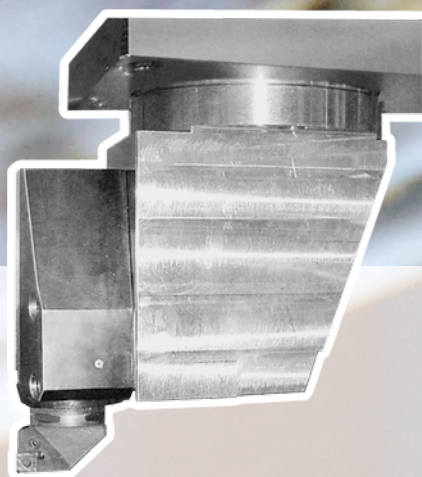
STANDARD  
TOOLHOLDER



TAILOR MADE  
TOOLHOLDER



DOUBLE MODULAR TOOLHOLDER  
FOR TURNING AND MILLING

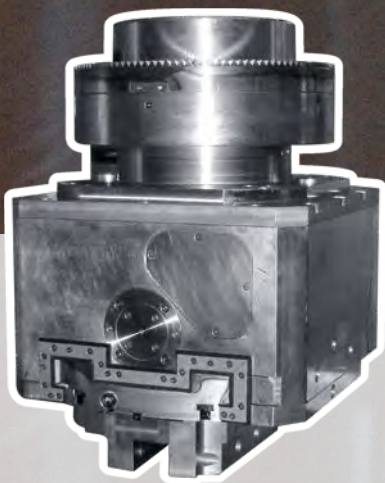


VERTICAL MODULAR  
TOOLHOLDER

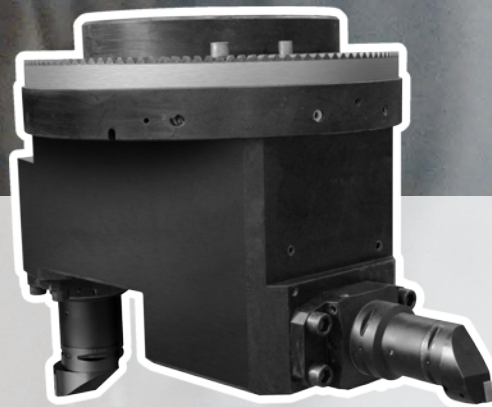


MODULAR  
BORING BAR





**AUTOMATIC POSITIONING  
TOOLHOLDER**



**DOUBLE MODULAR  
TOOLHOLDER**



**STANDARD  
BORING BAR**

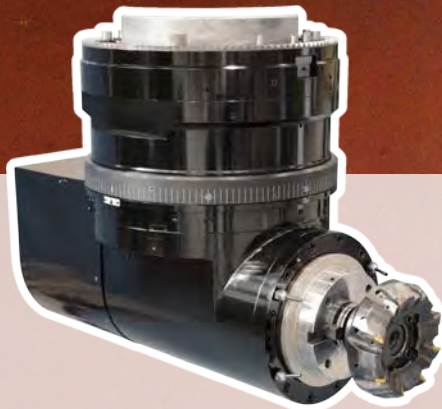


# LIVE SPINDLE ACCESSORIES

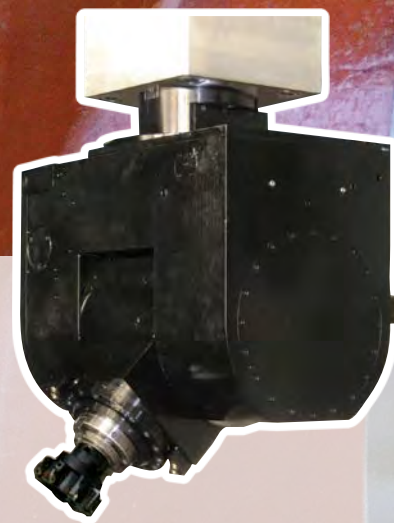
## ACCESSORI DI FRESATURA



VERTICAL  
MILLING HEAD



HORIZONTAL  
MILLING HEAD



UNIVERSAL  
POSITIONING HEAD



RIGHT ANGLE  
HEAD

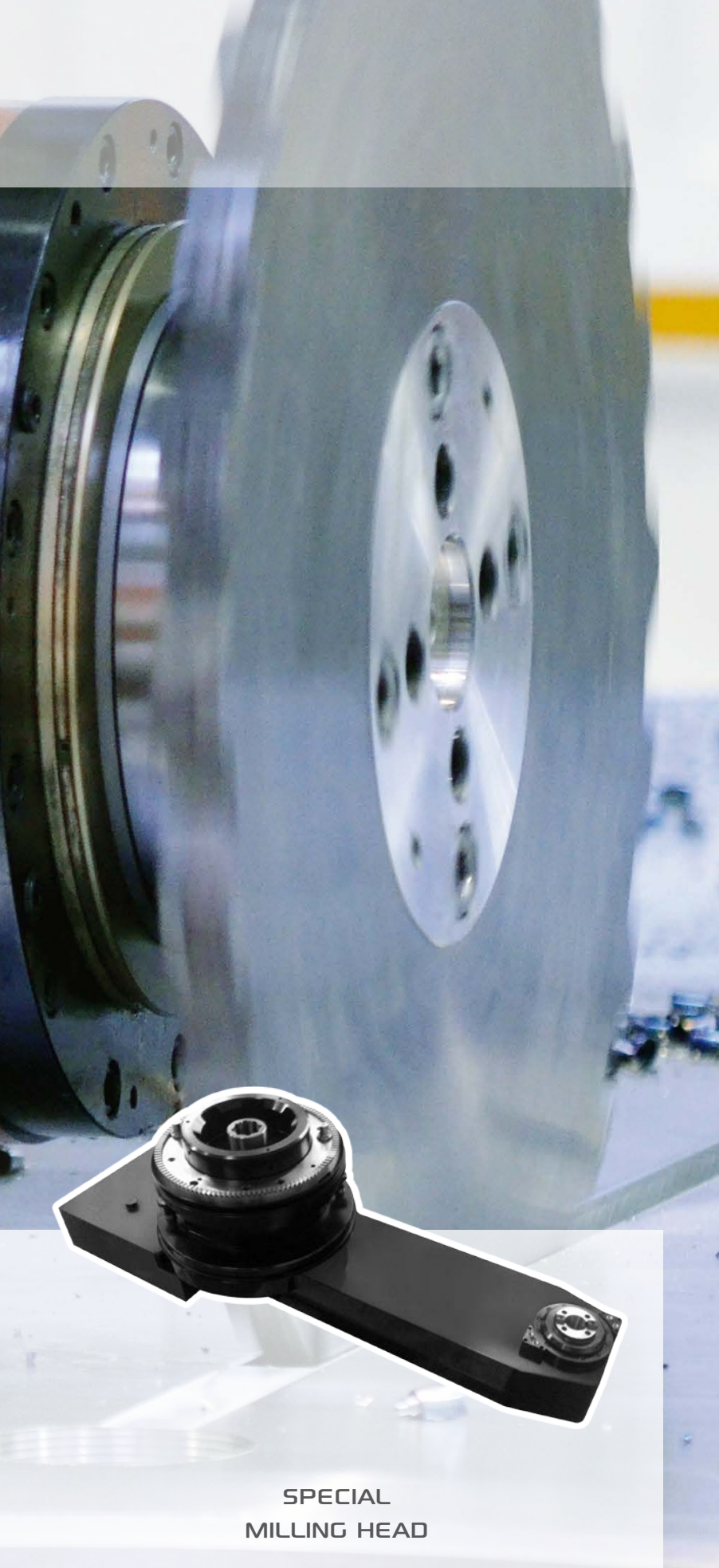


UNIVERSAL MANUAL  
HEAD



HIGH SPEED  
UNIVERSAL HEAD





**SPECIAL  
MILLING HEAD**



**FACING AND BORING HEAD**



**UNIVERSAL HEAD  
2 CONTINUOUS AXES**



# GRINDING ACCESSORIES AND PROBES

## ACCESSORI DI RETTIFICA E SONDE DI MISURA



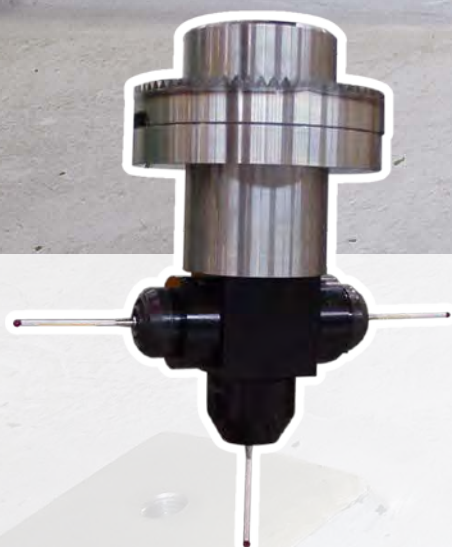
VERTICAL GRINDING  
ELECTROSPINDLE



VERTICAL GRINDING  
HEAD



ANGLE GRINDING  
HEAD



WORKPIECE  
MEASURING HEAD



TOOL PROBE  
CALIBRATION



MODULAR WORKPIECE  
MEASURING HEAD



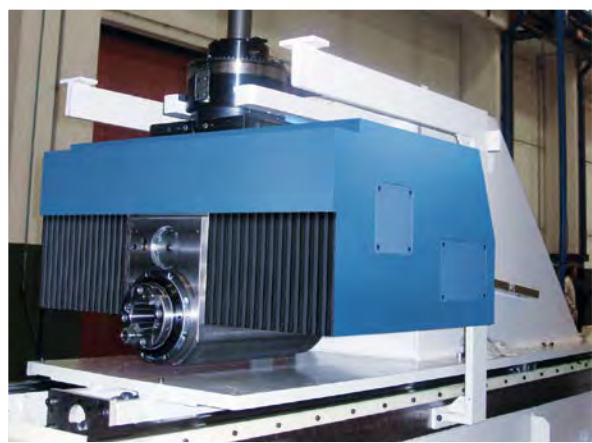
# OTHER ACCESSORIES ALTRI ACCESSORI



TABLE EXTENSIONS



CAMERA ON CARRIAGE



Y AXIS HEAD



CAMERA ON RAM



TURNING TOOL : PRESETTING



ROTATING TOOL : PRESETTING













# PIETRO CARNAGHI

M a c h i n e   T o o l s



COMPANY WITH QUALITY MANAGEMENT  
SYSTEM CERTIFIED BY DNV  
= ISO 9001:2008 =

