

HOI 50

www.tosvarnsdorf.eu

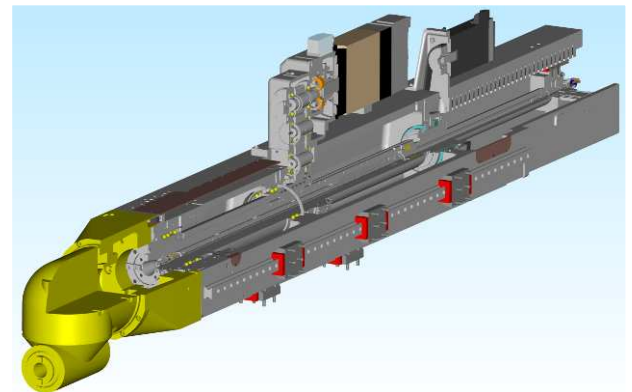
New goals need new solution

Optional accessories

2 AXES ORTHOGONAL AUTOMATICALLY POSITIONED MILLING HEAD

The milling head with 2 axes driven by the spindle of the machine HOI50 has been designed as a special technological accessory for TOS VARNSDORF machines. The head is optimal for roughing or universal machining of areas, which are oriented in basic orientations or generally against orthogonal coordinate system of the machine.

FASTENING ON THE MACHINE



Fastening of the head on the machine RAM is fully automatic.

Machines are necessary to adapt for automatic fastening/removing of the head on/from the machine with system PICK-UP.

On machines OPTIMA and VARIA the head is permanent integrated.

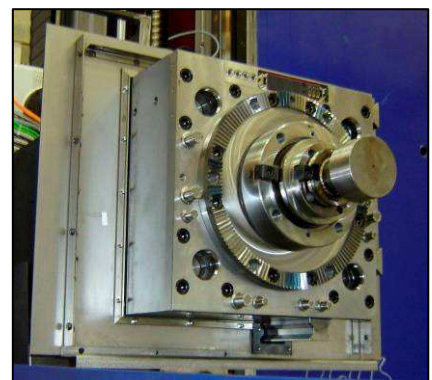
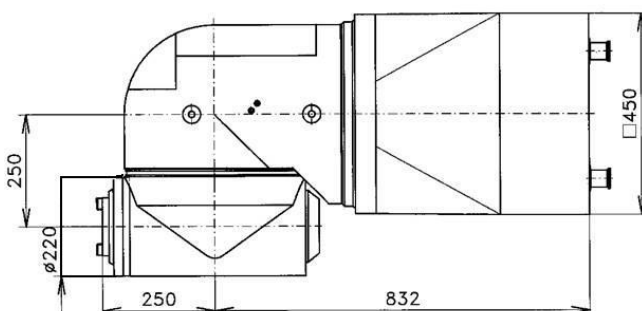
OPTIONAL FIXTURE SUPPORT



The support improves significantly the putting off the optional accessories determined for the automatic control of the PICK UP change.

Its execution (number of storage places, covers, etc.) is subject to prior consultation with the manufacturer.

Application for WRD 130/150 (Q)



HOI 50

BASIC SPECIFICATIONS

Type of machine		WRD 130/150 (Q)	WRD 170 (Q)	GRATA
Spindle speed max.	RPM	3,000 / 2,500	2,200	4,000
Power transmitted max.	kW	37	37	37
Spindle torque max.	Nm	1,200	1,200	1,200
Type of machine		MAXIMA I / MAXIMA II	OPTIMA	VARIA
Spindle speed max.	RPM	3,000 / 2,500	4,000	3,500
Power transmitted max.	kW	37	28	37
Spindle torque max.	Nm	1,200	1,070	1,200
Spindle taper		ISO 50		
Basic increment of positioning in both dividing areas	Deg	1°		
Rotation range in A axis	Deg	±120°		
Rotation range in C axis	Deg	±185°		
Accuracy of positioning of A and C axis	Deg	±3"		
Max. speed of head rotation in axes A and C	RPM	5,5		
Total weight	kg	1,100 (750*)		

* TOS^{tec} machines

TOOL CHANGE

The head enables the tool change both in the automatic cycle (WRD machines), as well as manually by means of buttons positioned on the separate panel.

TOOL COOLING

The head is adapted for tool cooling by means of outer nozzles, which are positioned on the face of the head, as well as for tool cooling through the spindle.

LUBRICATION

Lubrication of inner tooth gears, of the bearings of mounting of the working spindle and of the shafts is performed as the permanent grease one.



FURTHER INFORMATION
YOU CAN FIND ON OUR
NEW WEB PAGES
www.tosvarnsdorf.eu



www.tosvarnsdorf.eu